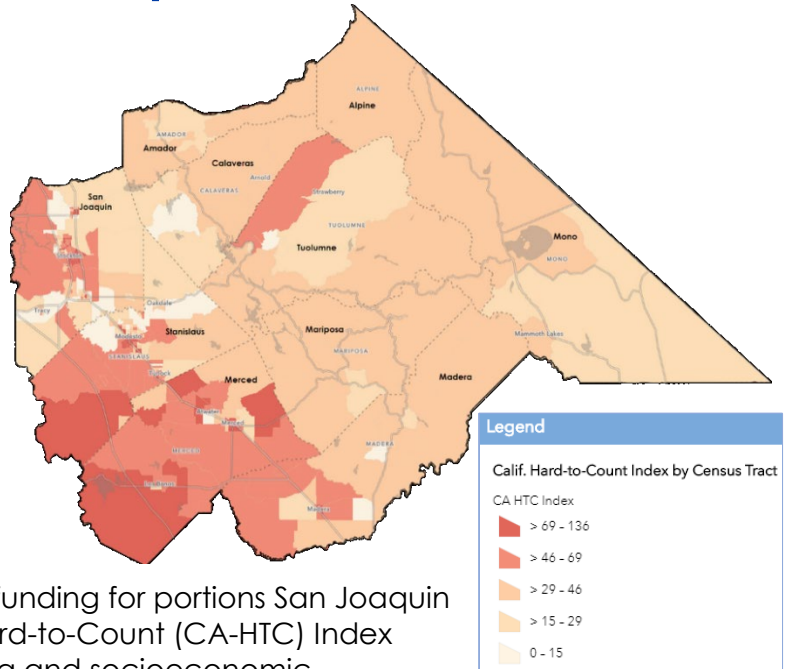




California Complete Count – Census 2020 Region 4 Snapshot

Geography and topography alone make it extremely challenging to reach hardest-to-count communities in Region 4. The region ranges from the rugged Sierra Nevada mountains at southern Lake Tahoe to Yosemite National Park, and down across the San Joaquin Valley floor. The area has an enormous amount of forestry married with agricultural veins emanating from the central valley into to the foothills. Of the ten counties in the region, six opted to receive state funding: Calaveras, Madera, Mariposa, Merced, Stanislaus and Tuolumne. The City of Stockton opted to receive State funding for portions San Joaquin County. The map above displays the Hard-to-Count (CA-HTC) Index based on multiple demographic, housing and socioeconomic variables that correlate to an area that is difficult to enumerate. Census tracts with a higher CA-HTC index are likely to pose significant challenges to count in 2020, while tracts with lower indexes should be easier.



The ACBO, Faith in Action Network, is working with a diverse set of community-based organizations that will use robust and comprehensive grassroots strategies targeting hardest-to-count populations. They will cover the portions of San Joaquin County, and Alpine, Amador and Mono Counties, not opt-in to directly receive state funding.

CONTRACTED PARTNERS

ACBO

Faith in Action Network

Counties

Alpine*, Amador*, Calaveras, Madera, Mariposa, Merced, Mono*, San Joaquin (City of Stockton)*, Stanislaus, Tuolumne

*Alternative fiscal agent: Faith in Action Network

County Offices of Education

Madera, Merced, San Joaquin, Stanislaus, Tuolumne

FUNDING ALLOCATIONS

Partner	Allocation
ACBO	\$1,370,271
Counties	\$1,215,378
County Offices of Education	\$275,470
Total Census Office Investment in Region 4**	\$2,861,119

**Total does not include Tribal Government, Statewide outreach contracts, or media investments



REGION 4 SNAPSHOT

County	Total Population	Population Above CA HTC Median	Limited English Population	Top 3 Non English Languages Spoken at Home	Leading Hardest To Count Causes
Alpine	1,203		25	Other and unspecified languages, Spanish, Vietnamese	
Amador	37,306	16,154	1,122	Spanish, Other Asian and Pacific Island languages, Other Indo-European languages	Vacant housing units, Moved recently, Unemployed
Calaveras	45,057	15,532	887	Spanish, Other Asian and Pacific Island languages, Tagalog (incl. Filipino)	Vacant housing units, Moved recently, Non-family households
Madera	154,440	81,757	27,735	Spanish, Other Indo-European languages, Other and unspecified languages	Below 150 percent of poverty level, Non-high school graduates, Households receiving public assistance
Mariposa	17,658	8,732	413	Spanish, Other Indo-European languages, Tagalog (incl. Filipino)	Vacant housing units, Households without broadband subscription, Non-family households
Merced	267,390	101,503	56,696	Spanish, Other Indo-European languages, Other Asian and Pacific Island languages	Unemployed, Households receiving public assistance, Non-high school graduates
Mono	14,058	2,469	1,076	Spanish, Chinese (incl. Mandarin, Cantonese), Vietnamese	Households without broadband subscription, Vacant housing units, Non-family households
San Joaquin	724,153	295,286	117,037	Spanish, Other Indo-European languages, Other Asian and Pacific Island languages	Unemployed, Households receiving public assistance, Below 150 percent of poverty level

County	Total Population	Population Above CA HTC Median	Limited English Population	Top 3 Non English Languages Spoken at Home	Leading Hardest To Count Causes
Stanislaus	535,684	248,269	84,251	Spanish, Other Indo-European languages, Other Asian and Pacific Island languages	Unemployed, Households receiving public assistance, Non-high school graduates
Tuolumne	53,899	24,585	1,036	Spanish, Other Indo-European languages, Korean	Vacant housing units, Households without broadband subscription, Non-family households

CONTACT INFORMATION

Please refer to <https://census.ca.gov/wp-content/uploads/sites/4/2019/07/CA-Census-Outreach-Team.pdf> for the most up to date contact information.