

Census 2020 California Hard-to-Count Fact Sheet

Congressional District 18

(CA Census 2020 Region 3, 5)

Race and Hispanic Origin	
Total population	735,753
Hispanic or Latino of any race	16.4%
Hispanic Exclusive Race:	
White alone	54.5%
Black or African-American alone	1.8%
American Indian and Alaska Native alone	0.2%
Asian alone	22.5%
Native Hawaiian and Other Pacific Islander alone	0.3%
Some other race alone	0.3%

Top 3 Languages Spoken at Home	
Total Limited-English Population (Persons 5 years and older who do not speak English "very well")	81,682
Spanish	35.1%
Chinese (incl. Mandarin, Cantonese)	26.4%
Other Indo-European languages	8.6%

Hard-to-Count Characteristics	
The California Hard-to-Count (CA-HTC) Index is based on multiple demographic, housing and socioeconomic variables correlated with an area being difficult to enumerate. Census tracts with higher indexes are likely to be places that will pose significant challenges to enumerate in 2020.	
Percent of Total Housing Units:	
That are vacant (includes seasonal)	5.3%
With 3 or more units in a multi-unit structure	29.4%
Percent of Occupied Housing Units (or Households):	
That are renter-occupied	39.2%
That are overcrowded	1.7%
Without broadband Internet	10.0%
With limited-English speaking ability	6.3%
That are non-family	31.5%
Receiving public assistance income	1.3%
Percent of population:	
Under 5 years old	5.7%
That is foreign-born	29.5%
Who moved from outside county in past year	7.0%
With income below 150 percent of poverty level	11.0%
Age 16 or older that are unemployed	4.6%
Age 25 or older who are not high school graduates	6.6%

California Hard-to-Count Characteristics	
Median CA-HTC index all census tracts	20.0
Estimated Total Population in Census Tracts with above median CA-HTC	349,450
Leading HTC characteristics in those areas: Multi-unit structures; Moved recently; Non-family households	

Top 5 CA-HTC Census Tracts in District	
Census Tract 6121 - San Mateo County:	
Total Population	8,925
CA-HTC Index	100.0
Leading Hard-to-Count Reasons: Crowded units Multi-unit structures Renter-occupied units	
Census Tract 6102.03 - San Mateo County:	
Total Population	3,928
CA-HTC Index	95.0
Leading Hard-to-Count Reasons: Renter-occupied units Crowded units Foreign-born population	
Census Tract 6102.01 - San Mateo County:	
Total Population	6,046
CA-HTC Index	83.0
Leading Hard-to-Count Reasons: Crowded units Foreign-born population Multi-unit structures	
Census Tract 5065.01 - Santa Clara County:	
Total Population	7,529
CA-HTC Index	83.0
Leading Hard-to-Count Reasons: Limited English-speaking households Children under 5 Multi-unit structures	
Census Tract 5130 - Santa Clara County:	
Total Population	8,691
CA-HTC Index	83.0
Leading Hard-to-Count Reasons: Households without broadband subscription Multi-unit structures Renter-occupied units	



For a detailed map of all census tracts, go to census.ca.gov/HTC-map

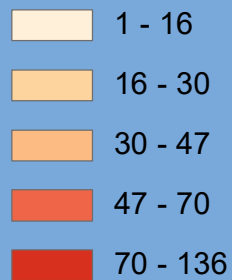
Data Source: U.S. Census Bureau, American Community Survey, 2013-2017 (5-year).

Geography Note: Census tracts do not cross county boundaries but a tract may be divided by city, district, and other boundaries. Also, the same tract number may be used in more than one county.

To learn more about California's Census 2020 efforts, please visit census.ca.gov

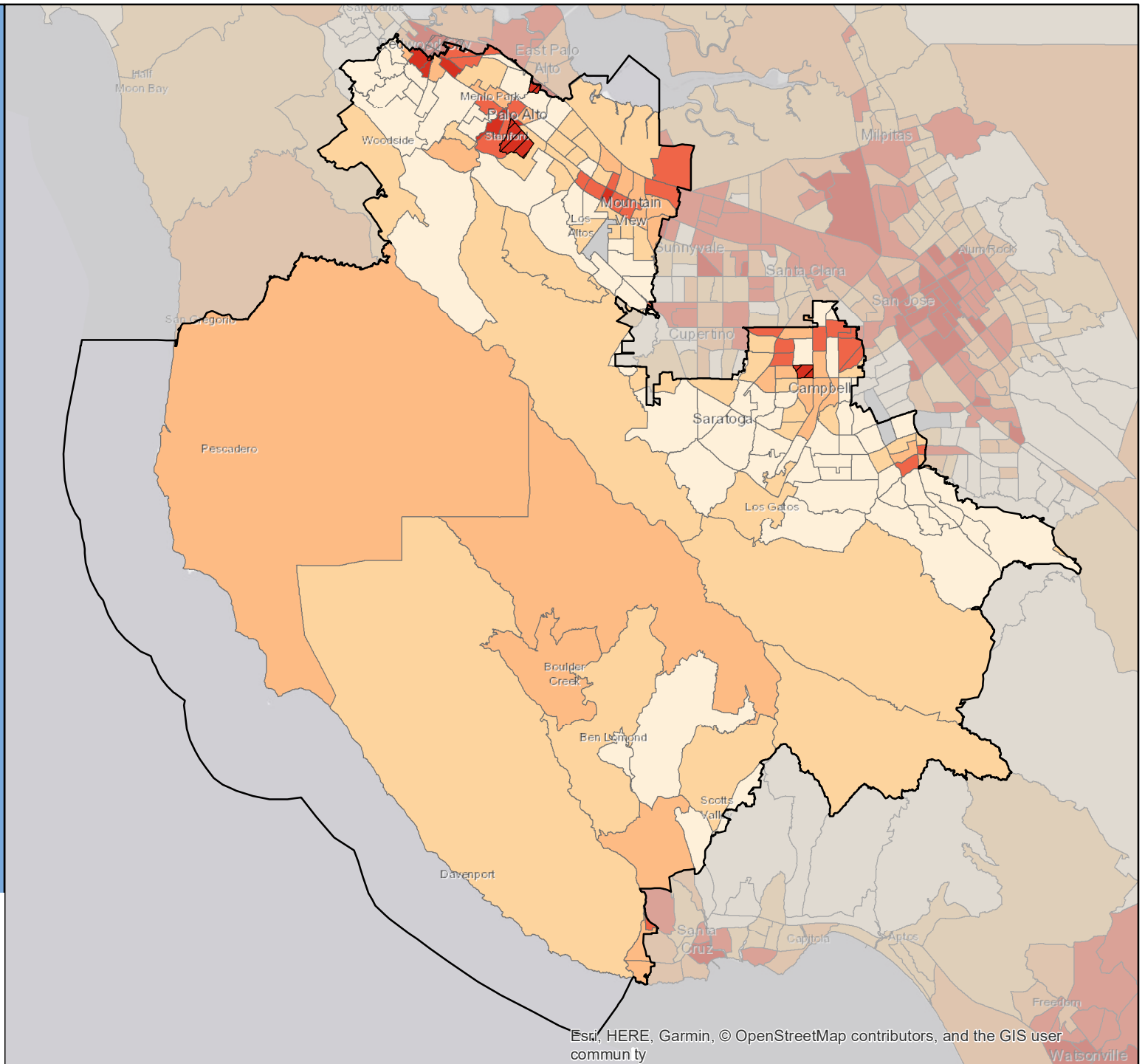
Congressional District 18

California Hard-to-Count Index by Census Tract



Tracts with highest indexes

CA-HTC Index is 0



Esri, HERE, Garmin, © OpenStreetMap contributors, and the GIS user community