

Area Census Offices (ACOs): Leasing Status

- Wave One: Opening January to March 2019
- Overseeing Address Canvassing Operation

| Offices: | Address: | Area of Coverage: |
|-------------|---|---|
| Bakersfield | 5060 California Ave. Bakersfield, CA93309 | Inland: Kern County to Siskiyou and Modoc Counties |
| Oakland | 7901 Oakport St. Oakland, CA94621 | Coastal: Monterey County to Del Norte County |
| Van Nuys | 6300 Canoga Ave. Woodland Hills, CA91367 | Los Angeles County |
| Riverside | 1605 Spruce St. Riverside, CA92507 | Imperial, Orange, Riverside, San Bernardino, San Diego Counties |

2020 CENSUS Area Census Office Organization

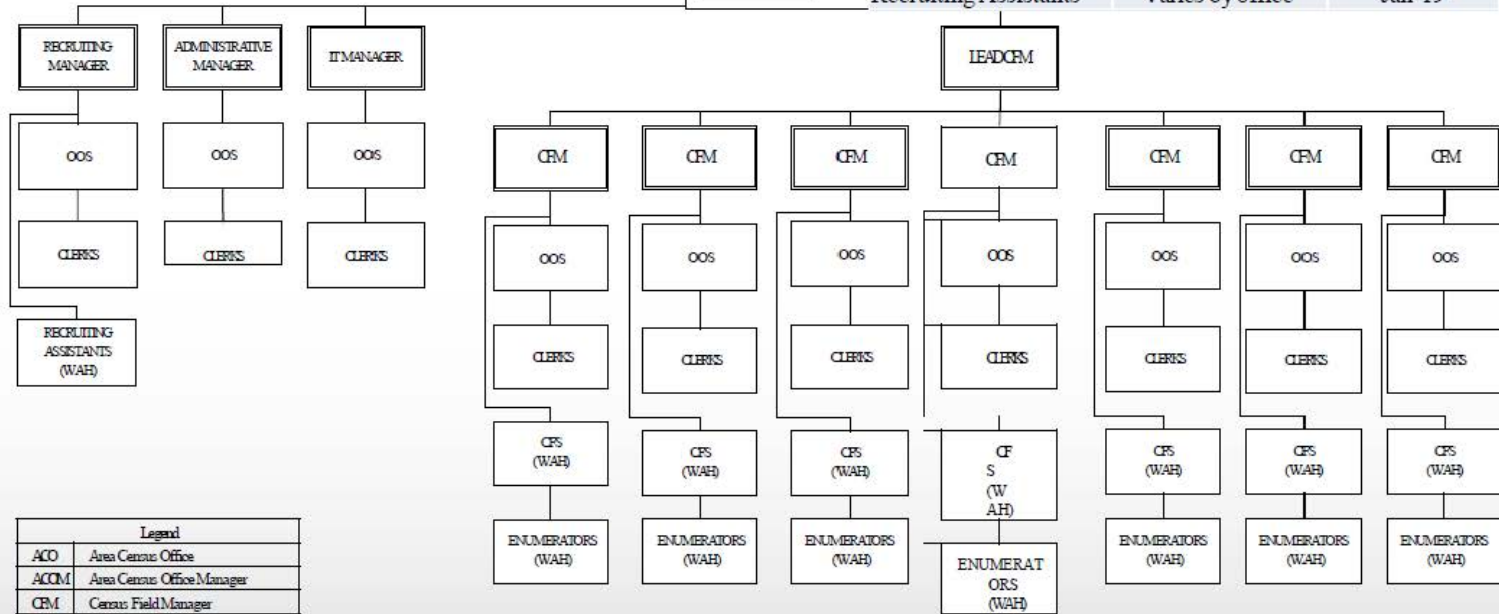
As of 2/7/2018

NOTE: Positions subject to change and the number of CFMs per ACO will vary.

| Position | Count | Start Date |
|-----------------------|------------------|------------|
| Recruiting Manager | 1 per office | Aug-18 |
| IT Manager | 1 per office | Dec-18 |
| Remaining Managers | Varies by office | Jan-19 |
| Recruiting Assistants | Varies by office | Jan-19 |

ACOM

ADMINISTRATIVE ASSISTANT



| Legend | |
|--------|------------------------------|
| ACO | Area Census Office |
| ACOM | Area Census Office Manager |
| CFM | Census Field Manager |
| CFS | Census Field Supervisor |
| IT | Information Technology |
| OOS | Office Operations Supervisor |
| WAH | Work at Home |

Partnership Program: California Staffing

| Position | Count | Start Date |
|------------------------------|-------|----------------|
| Coordinator | 1 | Current Staff |
| Partnership Specialists | 5 | Current Staff |
| Partnership Specialists | 10 | August 2018 |
| Coordinator | 1 | September 2018 |
| Partnership Specialists | 7 | November 2018 |
| Total CASpecialists | 22 | |
| Total Specialists for Region | 41 | |