

APPENDIX A. Glossary

List of Abbreviations, Acronyms and Commonly Used SOCS terms

Item	Description
ACBO	Administrative Community-Based Organization <i>Large community-based organization with the administrative capacity and experience to conduct robust outreach throughout a region</i>
CA-HTC Index	California Hard-to-Count Index <i>A California-specific metric that incorporates 14 demographic, socio-economic and housing variables</i>
Census Bureau	United States Census Bureau
Census Office	California Complete Count – Census 2020 Office (also CCC)
Census Team	State of California personnel assigned to the Census Office
CCCC	California Complete Count Committee <i>An advisory committee of leaders from business, non-profit, and state entities, established to increase awareness about the Census and to encourage all Californians to participate</i>
COW	Constitutional Officers Workgroup
CQA	Census Questionnaire Assistance
DOF	Department of Finance
FSCPE	Federal-State Cooperative for Population Estimates
GAO	Federal Government Accountability Office
GEOP/GP	Geographic Programs Operation/Geographic Partnerships project
GovOps	Government Operations Agency
GQ	Group Quarters Operation
Grass-tops	<i>Leaders of grass-roots communities and organizations</i>
GSS-I	Geographic Support System Initiative
GUPS	Geographic Update Partnership Software
HTC	Hard to Count <i>Census tracts that are least likely to respond to the Census without specialized outreach and assistance</i>
HU	Housing Unit
HUFU	Housing Unit Follow-up
IP	Implementation Plans <i>Developed by State contracted partners in collaboration with community members detailing the methods and activities identified as the most effective to reach target populations</i>
IPC	Federal Integrated Partnership and Communications
IPW	Implementation Plan Workshop <i>Regional workshop bringing together regional and local leaders to identify outreach gaps and resources to fill them, and collaborate on implementation planning</i>

Item	Description
IR	Interactive Review
ISR	Internet Self Response Operation
IT	Information Technology
LACAP	Language and Communication Access Plan <i>State plan to provide equal and meaningful access to California's Limited English Proficient (LEP) individuals and people with disabilities.</i>
LCCC	Local Complete Count Committee <i>A locally established and led committee to bring together community leaders, trusted messengers, cities, county representatives, and Census staff to use local knowledge and resources to inform and conduct focused local outreach and increase the count</i>
LRS	Low Response Score <i>Census Bureau metric to estimate the portion of a census tract that won't voluntarily fill out the census form; based on 15 variables, as well as the response rate from the previous census</i>
LUCA	Local Update of Census Addresses Operation
MAF	Master Address File
MAFCS MAF	Coverage Study
MDM	Mobile Device Management
MMVT MAF	Model Validation Test
MOJO	In-field operational control system
MPR	Mail Participation Rate <i>The percentage of forms mailed back by households that receive them, excluding those marked "undeliverable"</i>
MRR	Mail-back Response Rate <i>The percentage of all questionnaires sent back from physical addresses, including those marked "undeliverable"</i>
NARA	National Archives and Records Administration
NID Non-ID	Processing Operation
NPC	National Processing Center
NRFU	Nonresponse Follow-Up <i>The period from May 1 to July 30, 2020, when federal enumerators visit households that have not yet completed the census form</i>
O&M	Operations and Maintenance
OPR	Governor's Office of Planning and Research
P.L.	Public Law
PBC	Partial Block Canvassing
PDC	Paper Data Capture Operation
PM	Program Management
PSAP	Participant Statistical Areas Program
QAC	Questionnaire Assistance Center <i>A physical location with trained and linguistically competent staff and online equipment to help the public get information and fill out the census form</i>

Item	Description
QAK	Questionnaire Assistance Kiosk <i>A standalone, unstaffed kiosk that provides confidential online methods for the public to fill out the census form, through a tablet, computer, laptop or other device connected to a secure WiFi</i>
QC	Quality Control
RCC	Regional Census Center
RDP	Redistricting Data Program Operation
RFP	Request for Proposal
RPM	Regional Program Manager <i>Regionally based Census Office representative who interacts with local and regional partners, overseeing outreach efforts, ensuring all regional partners contribute to SwORD, and working with regional partners to meet contractual obligations</i>
SAWG	State Agency Working Group
SP	Strategic Plan <i>Developed by State-contracted partners to outline HTC areas and specific collaborations, partnerships, and leveraging of resources to achieve a complete count</i>
SPC	Security, Privacy, and Confidentiality Operation
State	State of California
Statewide CBO	Statewide Community-Based Organization <i>State-contracted organization with statewide infrastructure and provides resources for and targeted outreach to one or more of the 15 vulnerable populations the State identifies as needing focused, culturally relevant and linguistically appropriate outreach and messaging.</i>
SwORD	Statewide Outreach and Rapid Deployment mapping portal
TEA	Type of Enumeration Area
TIGER	Topologically Integrated Geographic Encoding and Referencing System
Touches & Impressions	<i>Direct or indirect contact between 2020 Census campaigners and a member of a target population</i>
TSAP	Tribal Statistical Areas Program
U.S.	United States of America
UE	Update Enumerate Operation
URL	Uniform Resource Locator
Vulnerable Populations	<i>A list of 15 demographic and socioeconomic groups who may be vulnerable to being undercounted, identified by the Census Office</i>

Executive Department

State of California

EXECUTIVE ORDER B-49-18

WHEREAS the Constitution of the United States requires an enumeration of the population every ten years to apportion congressional representation among the states; and

WHEREAS pursuant to Section 141 of Title 13 of the United States Code, the next federal decennial census of the population will be taken on the first day of April, 2020; and

WHEREAS a complete and accurate count of California's population is essential to the State, as the census count determines congressional representation, state redistricting, federal formula grant allocations and the distribution of state subvention funds for an entire decade until the next decennial census is taken; and

WHEREAS there are over 70 federal programs benefiting California that use census enumerations and population numbers as part of their funding formulas, including formulas for education, health, and human services programs; and

WHEREAS the United States Census Bureau will endeavor to count every person in the nation, and many states will be initiating programs to promote the census; and

WHEREAS it is vitally important for California to do everything it can to ensure that every Californian is counted in the upcoming census.

NOW, THEREFORE, I, EDMUND G. BROWN Jr., Governor of the State of California, in accordance with the authority vested in me by the Constitution and statutes of the State of California, do hereby issue this Order to become effective immediately:

1. The California Complete Count Committee (Committee) is hereby established. The members of the Committee shall serve without compensation and at the pleasure of the Governor. The Committee shall include one member appointed by the Speaker of the Assembly and one member appointed by the Senate President pro Tempore.
2. The Committee will develop, recommend, and assist in the administration of a census outreach strategy to encourage full participation in the 2020 federal decennial census of population required by Section 141 of Title 13 of the United States Code.
3. The census outreach strategy shall include, but not be limited to, State agency initiatives to encourage participation in the 2020 Census, the establishment and support of school-based outreach programs, partnerships with non-profit community-based organizations, and a multi-lingual, multi-media campaign designed to ensure an accurate and complete count of California's population.



4. In carrying out its duties, the Committee may appoint working groups as it deems appropriate, and shall solicit participation from relevant experts and practitioners involved in census issues.
5. The California Complete Count effort will be coordinated out of the Governor's Office of Planning and Research (OPR), which shall enlist all State agencies and departments within the executive branch to identify effective methods of outreach to Californians, and to provide resources to ensure the outreach program is successful and that all Californians are counted. Each agency and department within the executive branch shall inform OPR of its designated census point person for purposes of this California Complete Count effort. All agencies and departments within the executive branch shall cooperate with the Committee and provide support to the Committee.
6. The Committee shall submit an initial report to me by October 1, 2018, containing its recommended outreach strategy to encourage full participation and avoid an undercount in the 2020 Census. The Committee shall submit interim reports every January 1 and June 30 thereafter, with a final report no later than June 30, 2021, specifying actual outreach efforts and results that were implemented for the 2020 Census.

IT IS FURTHER REQUESTED that other entities, including constitutional offices, the offices of the legislative and judicial branches, and local agencies, shall cooperate fully and provide support to the Committee.

This Order is not intended to create, and does not create, any rights or benefits, whether substantive or procedural, or enforceable at law or in equity, against the State of California or its agencies, departments, entities, officers, employees, or any other person.



IN WITNESS WHEREOF I have hereunto set my hand and caused the Great Seal of the State of California to be affixed this 13th day of April, 2018.


EDMUND G. BROWN JR.
Governor of California

ATTEST:


ALEX PADILLA
Secretary of State



Quarterly Progress Report on the California Complete Count – Census 2020

A report to the Joint Legislative Budget Committee,
the Senate Select Committee on 2020 U.S. Census, and
the Assembly Select Committee on the Census

Prepared by: California Complete Count – Census 2020 Office

July 25, 2019



[This page is to facilitate double-sided printing]

TABLE OF CONTENTS

I. INTRODUCTION	1
II. BUDGET AND INFRASTRUCTURE	1
Overview	1
Adopted 2019-20 State Budget	2
Funding Allocations	2
Contracted Outreach and Communication Partners	4
Education Sector	9
Sector Outreach (Non-Education)	12
State Agency Outreach	13
Outreach and Public Relations (Media) Contract	14
Outreach Database Enhancements	15
California Housing and Population Sample Enumeration	15
Contingencies and Emergencies	15
Administration	16
California Complete Count Committee	16
Statewide Outreach and Rapid Deployment (SwORD)	17
Staffing and Organization	17
Administrative Support	17
Transparency, Reporting and Accountability	18
III. NEXT STEPS	18

EXHIBITS

Please note that some exhibits may contain their own page numbers, attachments, or exhibits.

- A. Regional Outreach Funding Allocation
- B. County Strategic Plan Due Dates
- C. "Count Me In!" Pilot Program Schools
- D. County Offices of Education Outreach Contract Statement of Work
- E. County Offices of Education Contract/Outreach Plan Status
- F. CA Complete Count – Census 2020 Office Organizational Chart

I. INTRODUCTION

The California Complete Count – Census 2020 Office (Census Office) is tasked with a once-in-a-decade effort that is on target to help achieve a full and complete count of all Californians in the 2020 Census. The strategic, data-driven campaign is built to be responsive to current conditions and lingering questions still to be decided by the U.S. Census Bureau (Census Bureau). The swiftly changing policy decisions and political climate influenced by the federal government necessitate a nimble plan to ensure hard-to-count (HTC) populations are not only counted but counted in the right place so that resources and representation are fairly allocated.

This report includes an update to the state of California's (State) progress related to the 2020 Census since the Census Office April 2019 Progress Report to the Legislature (April 2019 Report). Provided in response to the requirements of Section 45, Chapter 53, Statutes of 2018 (Senate Bill 866), the report consists of (1) the overall budget, including the annual allocations for community-based organizations (CBOs), media outreach, and local complete count committees and other local government entities; and (2) the total amount of funds allocated to organizations.

The budget allocations, tables, and program status reports highlighted in this document are current as of July 1, 2019. Additional program updates, including status of Strategic Plan approvals, will be made available on the Census Office's website at census.ca.gov. It also details the recently adopted Budget Act of 2019 that further augments the complete count effort, adding to the previously approved \$100.3 million for a total of \$187.2 million.

Further background and detail on the programs, operations and administrative actions referred to in this document can be found in the prior quarterly progress reports to the legislature, available at: census.ca.gov/reports.

II. BUDGET AND INFRASTRUCTURE

Overview

Governor Gavin Newsom signed the Budget Act of 2019, which approved nearly \$87 million for statewide census efforts, on June 27, 2019. The significant investment reflects the very real challenge that California faces as the home of the hardest to count regions in the nation. The \$187.2 million multi-year combined investment is outlined in the table below.

	Appropriation Amount	Expended	Encumbered	Available Balance
2017 Budget Act*	\$ 10,000,000	\$ 7,993,171	\$ 457,053	\$ 1,549,776
2018 Budget Act	\$ 90,300,000	\$ 13,101,965	\$ 55,651,163	\$ 21,546,872
2019 Budget Act	\$ 86,931,000	\$ -	\$ -	\$ 86,931,000
Total:	\$ 187,231,000	\$ 21,095,136	\$ 56,108,216	\$ 110,027,648

*The \$10 million includes two separate budget actions that provided \$7 million for the LUCA incentive program and \$3 million for initial planning activities that were conducted within the Governor's Office of Planning and Research. \$295,000 of the expended amount covered administrative costs at the Department of Finance.

Adopted 2019-20 Budget

The adopted 2019-20 State Budget reflects several funding proposals set forth in the Governor's January Budget and the Governor's May Revision, including:

- \$30 million to enhance the statewide Outreach and Public Relations (media) contract;
- Nearly \$18 million to supplement CBOs, school and sector outreach;
- \$2 million to further augment Native American population outreach;
- \$4 million to fully fund the California Housing and Population Sample Enumeration (CHPSE) survey; and
- \$931,000 to provide outreach contractors access to a robust data portal and a Census Office position to support and analyze data collection efforts.

The 2019-20 State Budget includes an additional \$30 million-dollar allocation, which is available for encumbrance or expenditure until June 30, 2021 (pursuant to Assembly Bill 74 (Committee on Budget; Chapter 23, Statutes of 2019)). Of the \$30 million, \$2 million is dedicated to local educational agency strategies. The remainder is to be available for 2020 Census efforts, including, but not limited to, language access, efforts by local governments and community-based organizations, costs related to appeals on determinations from the Census 2020 Local Update of Census Addresses (LUCA) process, or costs for other state entities related to Census outreach activities.

At time of publication, the Census Office is performing a gap analysis to determine where future outreach needs may exist and how to designate appropriate support for the identified areas. After the analysis is conducted, in early fall 2019, the Census Office will be in a strong position to address gaps and avoid potential duplications in resource allocation. Much of the information collected for the analysis will be through the Implementation Plan Workshops (IPWs), being held in the summer and early fall of 2019. Quarterly reports from contracted outreach partners and stakeholder meetings will also inform this process. Examples of gaps that potentially may surface include the need for additional language support services, Questionnaire Assistance Centers and associated staffing, media outreach, or community events.

The Census Office will provide an allocation schedule in the fall of 2019. Like the previous allocations, funding levels will be data-driven and support strategies effectively reaching the hardest-to-count Californians. The State will fund additional key outreach partners who have the expertise and capacity to activate HTC communities. In addition, the State will continue to work with partners who are trusted messengers among the HTC populations. The State will maintain reporting standards for contractors like those currently in place to uphold accountability and transparency.

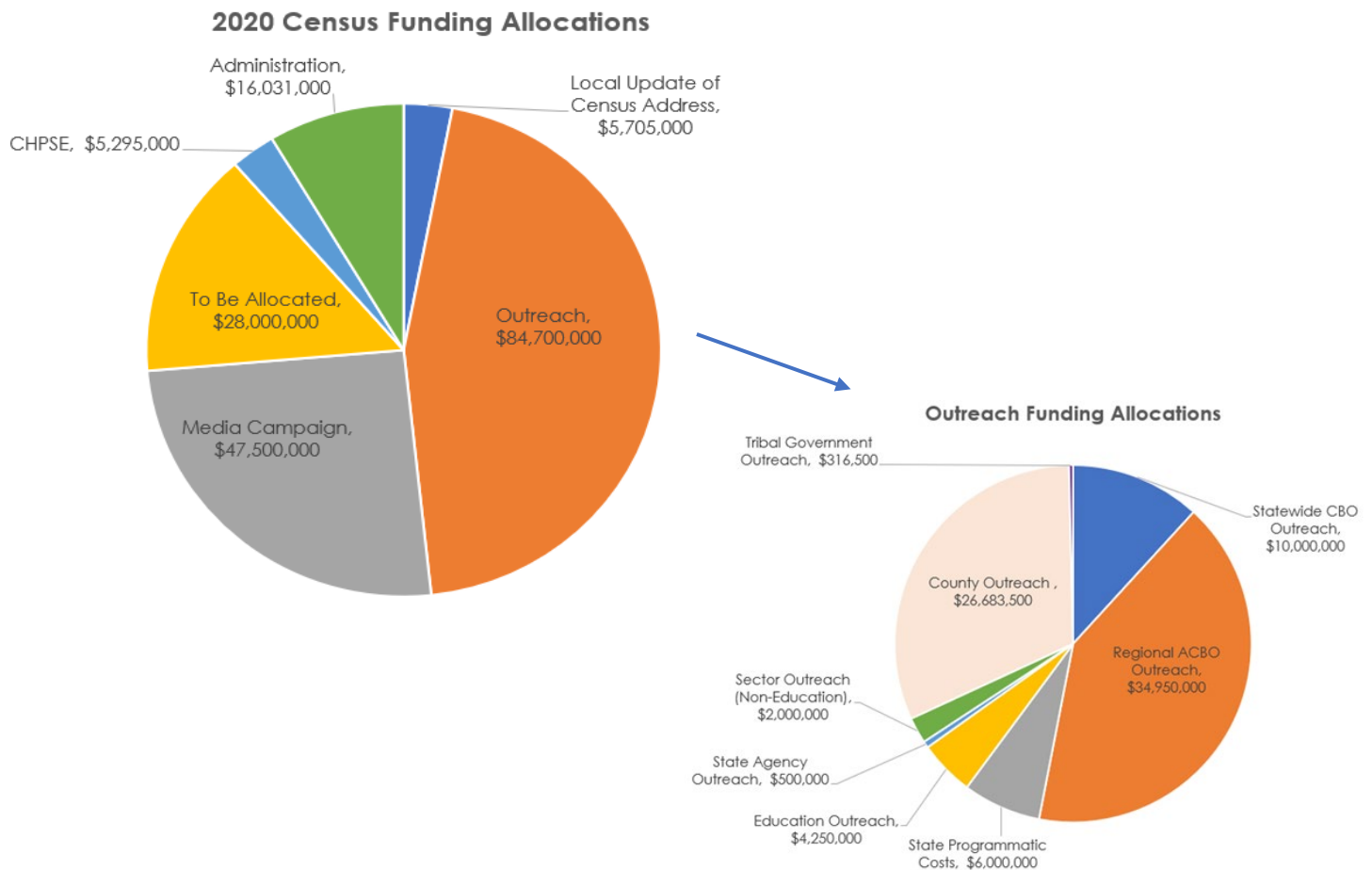
Funding Allocations

The below table and graph provide the funding and program area allocations prior to July 1, 2019, and the allocations pursuant to the Budget Act of 2019. In some instances, these numbers are broken down further in the report.

**California Complete Count Office
Census 2020 Program Funding Overview**

Programmatic Area	Original Funding Allocations	2019 Budget Act Funding Allocations	Total Allocation
Local Update of Census Address (LUCA)			
<i>Incentive Payments to Local Agencies</i>	\$ 7,000,000	\$ (1,295,000)	\$ 5,705,000
<i>LUCA Appeals</i>	\$ -	\$ -	TBD
Outreach			
County Contracts	\$ 26,683,500	\$ -	\$ 26,683,500
Tribal Outreach			
<i>Tribal Government Contracts</i>	\$ 316,500	\$ -	\$ 316,500
<i>Statewide Community-Based Organizations Contracts</i>	\$ -	\$ 800,000	\$ 800,000
<i>Media and Additional Community-Based Organization Contracts</i>	\$ -	\$ 2,000,000	\$ 2,000,000
Regional Administrative Community-Based Organizations (ACBO)			
<i>Regional Contracts</i>	\$ 22,950,000	\$ -	\$ 22,950,000
<i>Non-Response Follow Up Augmentations/Contingencies</i>	\$ -	\$ 10,000,000	\$ 10,000,000
<i>Statewide Community-Based Organization Contracts</i>	\$ 4,050,000	\$ 5,150,000	\$ 9,200,000
<i>State Programmatic Costs</i>	\$ 6,000,000	\$ -	\$ 6,000,000
Education			
<i>County Offices of Education Contracts</i>	\$ 750,000	\$ 3,000,000	\$ 3,750,000
<i>Census Education Curriculum</i>	\$ 250,000	\$ -	\$ 250,000
<i>Higher Education</i>	\$ 50,000	\$ -	\$ 50,000
<i>State Programmatic Cost</i>	\$ 200,000	\$ -	\$ 200,000
Sector (Non Education)			
<i>Healthcare (WIC)</i>	\$ -	\$ 500,000	\$ 500,000
<i>Other</i>	\$ 800,000	\$ 500,000	\$ 1,300,000
<i>State Programmatic Cost</i>	\$ 200,000	\$ -	\$ 200,000
State Agency Outreach	\$ 500,000	\$ -	\$ 500,000
Outreach and Public Relations Campaign			
<i>Statewide Contract</i>	\$ 16,100,000	\$ 30,000,000	\$ 46,100,000
<i>State Programmatic Cost</i>	\$ 1,400,000	\$ -	\$ 1,400,000
To Be Allocated	\$ -	\$ 28,000,000	\$ 28,000,000
Contingencies/Emergencies	\$ 1,000,000	\$ (1,000,000)	\$ -
California Complete Count Committee	\$ -	\$ -	\$ -
California Housing and Population Sample Enumeration*	\$ -	\$ 5,295,000	\$ 5,295,000
Administration	\$ 12,050,000	\$ 3,981,000	\$ 16,031,000
Totals	\$ 100,300,000	\$ 86,931,000	\$ 187,231,000

* \$295,000 is Department of Finance Administrative Costs



Contracted Outreach and Communication Partners

The Census Office budget is centered on outreach and communication through contracted partners that are trusted messengers best suited to reach HTC residents. Funding also supports robust data collection, monitoring, and reporting as contractors and partners implement their outreach strategies and then provide rapid deployment to areas with low-responses during the final phases of the 2020 Census data collection period.

Please see Exhibit A for allocations by region, based on the 10 Census 2020 geographic regions, which reflects Administrative CBOs (ACBOs), counties, and county offices of education. Budget allocations for other entities (statewide CBOs, media contractor and Tribal Governments) are not available on a regional basis due to the structure of their allocations.

The Census Office is working expeditiously to review and approve outreach contractors' documentation and invoices in a timely manner. Improvements in the review procedure have been made and additional staff is committed to this priority task for the Census Office so that contractors may proceed with their critical outreach work.

County and Tribal Governments

The table below shows the total amount, expenditures, encumbrances, and remaining balance for county contracts and Tribal Government funding agreements.

	Funded Amount	Expended	Encumbered	Available Balance
County Contracts	\$ 26,683,500	\$ 4,053,562	\$ 22,046,491	\$ 583,447
Tribal Funding Agreements	\$ 316,500	\$ 76,000	\$ 5,000	\$ 235,500
State Programmatic Costs	\$ 3,000,000	\$ 523,925	\$ 92,922	\$ 2,383,153
Total:	\$ 30,000,000	\$ 4,653,487	\$ 22,144,413	\$ 3,202,100

County Contracts

At the time of publication, 45 counties have opted in to state funding, with an additional 13 as fiscal agent alternates. Counties are in different phases of completing the required Strategic Plans, which serve as milestones that trigger payments. Strategic Plans are due 60 days following contract execution, so each county's deadline will vary. (Please see Exhibit B for the county Strategic Plan deadlines). Upon completion and receiving approval from the Census Office, counties receive 35 percent of their total award amount, minus a 10 percent withholding (to be released in February 2020). Subsequent quarterly reports and approved Implementation Plans also serve as payment triggers.

Strategic Plans are reviewed by the Census Office to ensure required elements are included and that plans reflect the actual HTC community needs with the appropriate level of resources, in-language and culturally appropriate tactics, and budget. The review process includes a two-way dialogue between the county and Census Office to address questions and offer possible solutions to achieve the most efficient and effective plan possible before finalization. This is important since Strategic Plans also serve as a step in the development of the Implementation Plans, which are due in September 2019. Census Office staff is working diligently to follow-up on plans that are still pending approval.

Counties with approved Strategic Plans are¹:

- Contra Costa
- San Mateo
- Santa Clara
- Sacramento
- Sonoma
- Tehama
- Yolo

Tribal Governments

Census Office outreach efforts with Tribal Governments have shown that their operations are unique compared to other partners. Particularly, the distinct differences between the Tribal Governments, remoteness of their lands, and the lack of access to membership

¹ By August 31, 2019, the Census Office website will be updated to reflect Strategic Plan status updates.

information (which is strictly confidential to each individual Tribal Government) all provide challenges for this population and make them unlike any other HTC population.

Given the challenges, the Census Office extended the deadline for eligible Tribal Governments to provide an opt-in agreement to accept grant funding until August 31, 2019. (This was extended from the prior deadline of June 30.) A provision to receive funding is an agreement to develop and implement an Outreach Plan. Each plan will have unique elements and align with proven methods of engagement with the respective region.

Since the April 2019 Report, three additional Tribal Governments have completed the opt-in process, bringing the total to 13. In addition, four opt-in packages are being finalized and over 30 Tribal Governments are still reviewing the opt-in package for possible agreement to the terms.

The Tribal Governments that have opted-in (with grant amounts) are:

Cahto Tribe	\$ 2,500
Cher Ae Heights Indian Community of the Trinidad Rancheria	\$ 1,000
Hoopla Valley Tribe	\$10,000
Karuk Community Development Corporation	\$ 5,000
Mechoopda Indian Tribe	\$10,000
Morongo Band of Mission Indians	\$10,000
Pala Band of Mission Indians	\$10,000
Quartz Valley Indian Reservation	\$ 2,500
Redwood Valley Little River Band of Pomo Indians	\$ 2,500
Rincon Band of Luiseno Indians	\$10,000
San Pasqual Band of Mission Indians	\$10,000
Susanville Indian Rancheria	\$ 5,000
Yurok Tribe	\$10,000

The Census Office continues active communication with all 68 Tribal Governments that are eligible to enter the funding agreement. The remaining balance of funds not accepted by Tribal Governments will remain within Native American outreach.

The State-funded grant opportunity for Tribal Governments is just one of several layers specifically focused on reaching Native American populations. The Census Office is currently reviewing other ways to best serve the needs of the Native American populations in culturally appropriate methods through trusted messengers.

An initial opportunity made possible through the Budget Act of 2019 is the \$800,000 allocation to statewide CBOs serving Native Americans (see Community-Based Organizations section below.) In addition, the Budget Act of 2019 provides \$2 million for a communication campaign to reach all Native Americans through augmented, statewide efforts. The Campaign will produce various creative assets and products such as, tribal newsletters, public service announcements, paid and earned media, and branded collateral materials. The Census Office anticipates details of this strategy to be finalized in September 2019. These resources will also be used to assist with monitoring

completed efforts and assessing needs in real time to identify gaps. The multifaceted approach will ensure Native American populations are engaged no matter where they live.

Community-Based Organizations

The Census Office designated \$44.95 million for contracted partnerships with CBOs on a regional and statewide level in the complete count effort. With the Budget Act of 2019, additional award opportunities targeting the HTC population groups are secured along with \$10 million designated for Non-Response Follow Up (NRFU) period needs. The allocation schedule of the \$10 million is anticipated to be completed in early 2020.

The table below shows the total funded amount, expenditures, encumbrances and the remaining balance.

	Funded Amount	Expended	Encumbered	Available Balance
Regional ACBO Contracts	\$ 34,950,000	\$ 378,606	\$ 23,255,663	\$ 11,315,731
Statewide Contracts	\$ 10,000,000	\$ 108,000	\$ 3,892,000	\$ 6,000,000
State Programmatic Costs	\$ 3,000,000	\$ 523,925	\$ 92,922	\$ 2,383,153
Total:	\$ 47,950,000	\$ 1,010,531	\$ 27,240,585	\$ 19,698,884

Regional Administrative CBO Contracts

There are 10 Administrative CBOs (ACBOs), one for each Census 2020 geographic region, with executed contracts. Each ACBO is in various stages of finalizing their Strategic Plans with the Census Office for reaching the HTC populations in their regions. Thirty percent of the total contract award, minus a 10 percent withholding (to be released in January 2020) is triggered with the completion of an approved Strategic Plan. Census Office staff is working to ensure strategic plans are approved on time so that payment can be approved to the ACBO.

ACBOs seeking to contract with the State were required to submit a proposed Strategic Plan, which was revised with more granular level details on specific tactics, partners, and budgets. Draft Strategic Plans were due to the Census Office on May 31, 2019. The final review process includes the opportunity for a two-way dialogue between the contractor and the Census Office to address questions or make improvements as recommended by the Census Office. All plans will be finalized no later than August 31, 2019.

ACBOs with approved Strategic Plans are²:

- Sacramento Region Community Foundation (Region 1)
- United Way Bay Area (Region 3)
- California Community Foundation (Region 8)
- Charitable Ventures of Orange County (Region 9)

² By August 31, 2019, the Census Office website will be updated to reflect Strategic Plan status updates.

Statewide CBO Contracts

Contracts have been executed with 13 additional CBOs who are tasked with targeting outreach efforts based on statewide HTC demographic populations. Statewide CBOs were also required to submit their draft Strategic Plans by May 31, 2019, serving as the trigger payment for 30 percent of the total contract, minus a 10 percent withholding (to be released in January 2020.) As with other contractors, statewide CBO Strategic Plan review affords a two-way dialogue to address outstanding questions or provide supplemental information, if requested by the Census Office. All plans will be finalized no later than August 31, 2019.

Statewide CBOs with approved Strategic Plans are³:

- Coalition for Humane Immigrant Rights (CHILRA) – Immigrants/Refugees
- Coalition for Humane Immigrant Rights (CHILRA)— Limited-English Proficiency Households
- California Rural Legal Assistance Fund – Farmworkers
- Equality California Institute – Lesbian, Gay, Bisexual, Transgender, Queer/Questioning
- National Association of Latino Elected and Appointed Officials (NALEO) Education Fund – Latinos

The approved \$5.95 million in the Budget Act of 2019 will be used for two purposes:

1. \$5,150,000 is allocated to augmenting outreach for demographic groups with existing contractors. Funding will support outreach efforts for the remaining demographic categories that did not receive any contract proposals and thus did not have a contractor awarded. The remaining demographics groups include:
 - Middle Eastern/North African
 - Individuals with disabilities
 - Individuals and families experiencing homelessness
 - Seniors/Older Adults
 - Children ages 0-5
 - Veterans
2. \$800,000 is allocated to Native American outreach

The Census Office will leverage existing procurement authority (Public Contract Code 19150) that permits direct contracting to ensure organizations can begin work in a timely manner while maintaining robust transparency and reporting elements. Invitation to participate notice letters are anticipated to be sent in fall 2019.

³ By August 31, 2019, the Census Office website will be updated to reflect Strategic Plan status updates.

Implementation Plan Workshops

The Census Office is holding over 25 convenings during the summer and fall of 2019 throughout the state known as Implementation Plan Workshops (IPWs). The IPWs are structured to bring together community leaders and outreach contractors to continue collaborating on strategies reaching California's HTC populations. It also provides a workshop setting for outreach contractors to further refine their Strategic Plans in the development of effective and efficient Implementation Plans, which are due in fall 2019. In instances where the Strategic Plans have not been approved, staff is working to ensure they are approved on a timely basis in order to inform the ongoing IPWs⁴. The intended outcomes of the IPWs are to:

- 1) Identify gaps and good practices to learn from one another and create synergies;
- 2) Coordinate expertise and resources to ensure efficiency and relevance to the HTC population; and
- 3) Develop next steps to finalize implementation plans, including the language and communication access component, and coordination of outreach.

The Census Office is publishing Executive Summaries for each IPW to capture critical information that will inform the gap analysis and serve as a helpful reporting tool. The Executive Summaries highlight key discussion items; needs identified by the partners; next steps for contractors; and a summary of the event evaluation results. They also include presenter and attendee rosters. The Executive Summaries will be made available on the Census Office website.

The IPWs are also informing the Census Office and outreach stakeholders on how to tailor future convenings to successfully achieve the intended outcomes. Rather than a one-size fits all approach, IPWs are being tailored to reflect the characteristics of the region, such as the number of outreach contractors, geography, and contractor milestones. This has led in some instances to selecting more accessible meeting venues or rescheduling the date to allow for greater participation. Other IPWs are being combined for a single, larger regional event. More information about previously held and upcoming IPWs is available at census.ca.gov/events.

Education Sector

The Education Sector is a critically important component to reach those Californians that may be least likely to respond to the Census. The strategy is divided into three main areas: K-12 Census Curriculum, County Offices of Education contracts, and higher education.

⁴ By August 31, 2019, the Census Office website will be updated to reflect Strategic Plan status updates.

Each of these are detailed below along with the summary table showing expenditures, encumbrances and remaining balance.

	Funded Amount	Expended	Encumbered	Available Balance
K-12 Census Curriculum*	\$ 250,000	\$ 225,000	\$ 25,000	\$ -
County Department of Education Contracts	\$ 3,750,000	\$ -	\$ -	\$ 3,750,000
Higher Education	\$ 50,000	\$ -	\$ -	\$ 50,000
State Programmatic Costs	\$ 200,000	\$ 95,709	\$ -	\$ 104,291
Total:	\$ 4,250,000	\$ 320,709	\$ 25,000	\$ 3,904,291

*Effort is funded by the initial organization and planning appropriation provided through the Governor's Office of Planning and Research.

“Count Me In!” Census Curriculum

The “Count Me In!” curriculum began as a pilot program in Sacramento, Los Angeles, Orange, and Fresno counties for the 5th, 8th, 11th and 12th grades. The schools identified for the pilot program were included due to their HTC demographics of students and families in the respective school districts. (Please see Exhibit C for the list of pilot program schools). Teachers who piloted curriculum materials were provided a \$2,500 stipend for their planning and review. Additionally, the pilot program schools were awarded a \$2,500 grant to support onsite efforts related to promoting and implementing the Census curriculum. Pilot program teachers provided anecdotal comments and technical feedback on the specific lesson plans.

The pilot program evaluations are being analyzed by the Sacramento County Office of Education (SCOE) and the Los Angeles County Office of Education (LACOE) to identify any gaps in resources or need for additional clarification in the materials. The summary of findings is anticipated to be completed by August 2019.

After assessment of the pilot phase, the lessons will be revised, as needed, for statewide dissemination for the 2019-20 school year, with lessons intended for early 2020. SCOE is the contracted lead to conduct a series of rollout “Train the Trainer” sessions throughout the state designed to prepare teachers and other school leaders. SCOE staff will also provide ongoing coaching and technical support to educators using the “Count Me In!” resources. Finally, SCOE will conduct an evaluation assessing the effectiveness of the curriculum in raising students’ knowledge and awareness. It will also evaluate its effectiveness as an outreach tool to inform parents and family members. A final report will provide an analysis of outcomes achieved and recommendations for ongoing improvement of future census events.

County Offices of Education Outreach Contracts

County Offices of Education (COEs) serving the largest populations of HTC residents, as determined by number of Title I schools and Title III students within their jurisdictions, have the opportunity to serve as contracted outreach partners. They must “opt-in” to accept funding based on a number of required and optional components. Required components include hosting Questionnaire Assistance Centers, holding a “Census 2020

Week” between March 23 and April 9, and promoting events and resources in languages other than English based on spoken language of students. (Please see Exhibit D for the full details of contract requirements.)

The final deadline to “opt-in” to the funding agreement was June 15, 2019. The deadline was extended from the original deadline of May 1, 2019, to accommodate requests related to COE contracting procedures and resolve questions related to contract authority. COEs received information about the contracting opportunity and asked questions through two webinars hosted by the Census Office and direct emails and phone calls with Census Office staff.

There are 32 COEs that “opted-in” to the contract agreement, listed below. The first trigger for payment is approval of the COE outreach plan (40 percent of total contract, minus a 10 percent withholding), due 60 days following contract execution. (Please see Exhibit E for current contract and outreach plan status).

- | | |
|----------------|-------------------|
| • Alameda | • Riverside |
| • Butte* | • Sacramento |
| • Contra Costa | • San Benito |
| • El Dorado | • San Bernardino |
| • Fresno | • San Francisco |
| • Imperial | • San Luis Obispo |
| • Humboldt | • San Mateo |
| • Kern | • Santa Clara |
| • Los Angeles | • Santa Cruz |
| • Marin | • Shasta |
| • Mendocino | • Solano |
| • Merced | • Sonoma |
| • Monterey | • Stanislaus |
| • Napa | • Tehama |
| • Orange | • Tulare |
| • Placer | • Yolo |

**Administered by Tehama County*

The remaining eight eligible COEs (listed below) did not opt-in to the outreach agreement based on a variety of reasons. These included concerns about reporting requirements, limited capacity, insufficient funding, and alternative opportunities to promote Census 2020 such as through the “Count Me In!” curriculum and local complete count committees.

- | | |
|-----------------|-------------|
| • Kings | • San Diego |
| • Madera | • Sutter |
| • San Joaquin | • Ventura |
| • Santa Barbara | • Yuba |

The remaining dollars allocated for this purpose are dedicated to outreach strategies in the education sector. The additional \$2 million included in the Budget Act of 2019 will also be dedicated to the K-12 school-based outreach strategies with further details available in fall 2019 when the gap analysis is completed.

Higher Education

The Census Office secured a resolution from the California Community Colleges Board of Governors stating support for all 73 districts and 115 colleges to engage in Census 2020 outreach and education on their campuses in May 2019. The resolution encourages activities that may include providing Questionnaire Assistance Centers, actively participating on Local Complete Count Committees, and others tailored to local student body activities.

At time of publication, Governor Newsom has sent letters to the University of California President and Board of Regents, and the California State University Chancellor and Board of Trustees to begin a dialogue about education and participation on college campuses. The Census Office is currently working to take an inventory of higher education institutions that are involved at the local level and current engagement efforts. In addition, the Census Office is proactively collecting information from higher education entities about specific planning and implementation steps for anticipated campus-based engagement.

The higher education outreach strategies are being refined into a comprehensive outreach plan that will be finalized in August 2019.

Sector Outreach (Non-Education)

The Census Office has identified sector outreach as an important component of the comprehensive statewide strategy to reach those least likely to respond to the Census questionnaire. It is designed to complement other strategies that are based on geographic and demographic factors that contribute to making an individual hard to count. The Census Office has dedicated \$1.8 million to sector outreach and is placing initial focus on three areas with high capabilities to reach large HTC populations: healthcare, labor, and faith-based.

In reviewing potential anchor organizations to serve as ambassadors for their sector, the Census Office considered the following:

- 1) Data demonstrating a significant number of HTC populations are served through the anchor organization;
- 2) Ability to provide Questionnaire Assistance Centers with staffing through trusted messengers in trusted places;
- 3) Level of established, statewide infrastructure, which includes affiliate organizations, with communications channels to direct resources where gaps may exist;
- 4) Historical record of robust advocacy efforts to fully engage in statewide campaign activity; and
- 5) Extent of acknowledged and recognized leadership in their respective sectors.

The Census Office is leveraging existing procurement authority (Public Contract Code 19150) that allows direct contracting based on the Census Office's assessments of an organization's competitiveness, capacity and capability to fulfill the specific needs of the complete count effort in the timeframe and budget provided.

As a result, the Census Office is contracting with PICO California, the California Primary Care Association, and the California Labor Federation for faith-based, healthcare and labor sectors, respectively. As the anchor organizations they will be responsible for activities that include developing sector specific materials, which any organization in their field could use; providing "train the trainer" opportunities to their networks; supporting Questionnaire Assistance Centers in identified areas of need; and staffing for general coordination throughout the state. Each anchor organization contract is for \$250,000. All three anchor organizations have accepted the invitation to participate and, at time of publication, are developing their proposed Strategic Plans, which is a required element to initiate the contract.

Additional sector-based outreach will engage with businesses/corporations, technology and innovation, entertainment, rural communities, youth, and other areas to be identified following a similar contracting model in the fall 2019.

The table below shows the allocations, expenditures and encumbrances under sector outreach.

	Funded Amount	Expended	Encumbered	Available Balance
Sector Outreach	\$ 1,800,000	\$ -	\$ -	\$ 1,800,000
State Programmatic Costs	\$ 200,000	\$ 82,618	\$ -	\$ 117,382
Total:	\$ 2,000,000	\$ 82,618	\$ -	\$ 1,917,382

State Agency Outreach

The State Agency Outreach (SAO) strategy had proven successful in the 2000 and 2010 Census. The SAO will once again seek to leverage existing state agency, department, board, and commission resources and contacts, especially those that have direct interaction with HTC communities. The table below shows the amount available for SAO.

	Funded Amount	Expended	Encumbered	Available Balance
State Agency Outreach	\$ 500,000	\$ -	\$ -	\$ 500,000
Total:	\$ 500,000	\$ -	\$ -	\$ 500,000

Beginning in winter 2018, Census Office staff held initial small group and individual meetings with various agency contacts to begin building awareness of the strategy. An official State Agency Outreach kick-off meeting was held on May 17, 2019, to review the program strategies and goals of establishing an integrated approach that will maximize resources for a cohesive statewide effort. The Census Office also launched an asset survey to understand what existing resources are available for either direct HTC population engagement or other services that could support the complete count effort. Meetings with individual entities took place in June 2019 and the Census Office is currently

reviewing assets and opportunities to determine the best strategy to maximize these resources.

In addition, the Complete Count Committee Chair Secretary of State Alex Padilla is leading a Constitutional Officers Workgroup in conjunction to further the SAO program goals through the State constitutional offices.

First step examples of ways that agencies may be incorporating Census information with their activities include:

- Adding Complete Count banners/buttons to their websites;
- Adding logos and verbiage to email signature lines;
- Placing posters and informational materials in waiting areas, especially in buildings with public access;
- Hosting Questionnaire Assistance Centers and/or Questionnaire Assistance Kiosks;
- Integrating 2020 Census messaging at events and presentations;
- Adding Census branding or message inserts to existing mailings; and
- In-kind support through printing and design services, meeting spaces, and for other operational or administrative needs.

There will be other impactful efforts to be shared in late summer 2019. Rollout for each agency will coincide and complement their programs with an emphasis during the latter part of 2019 through the response period in 2020. Each agency will create their own timeline of activities based on their existing program calendar, which will also adjust to appropriately match the phases of Census Office outreach.

The Census Office anticipates supplementing material costs that exceed existing internal funding provided by agencies based on needs that may be unique to the services they offer or their means of interacting with HTC populations.

Outreach and Public Relations (Media) RFP

Reflecting the Budget Act of 2019, the Outreach and Public Relations (media) RFP will have up to \$46.1 million available to support a statewide coordinated strategy engaging local, ethnic media outlets and building on other outreach partners' efforts to date. The Census Office released the RFP on March 15, 2019 and held a bidders conference to assist interested bidders on March 29. Proposals were due on April 25. As of July 1, the Notice of Intent to Award the bid was announced with Mercury Public Affairs LLC as the selected vendor. The terms of the contract are currently being reviewed by the respective parties. While the Notice of Intent to Award announcement was made later than originally anticipated, the Census Office anticipates the timeline of deliverables will not be negatively impacted by the additional time needed to finalize the agreement.

The table below shows the expenditures, encumbrances and available balance for the media contract and administration.

	Funded Amount	Expended	Encumbered	Available Balance
Public Relations/Media Contracts	\$ 46,100,000	\$ -	\$ -	\$ 46,100,000
State Programmatic Costs	\$ 1,400,000	\$ 506,914	\$ 1,083	\$ 892,004
Total:	\$ 47,500,000	\$ 506,914	\$ 1,083	\$ 46,992,004

Outreach Database Enhancements

The Budget Act of 2019 includes funding to improve the data set used in Census efforts to monitor outreach and deploy necessary resources. While working with contracted partners in the development and use of the Statewide Outreach and Rapid Deployment (SwORD) tool, it became clear that contractors require household-level data in order to perform effective, targeted outreach such as household canvassing and phone banking. This level of data was not made available to the Census Office previously. The Census Office is allocating \$750,000 to acquire Political Data, Inc.'s (PDI) mobile and desktop application, which is capable of fulfilling this need. Outreach contractors and identified partners will have access to these resources through the State's account, which will result in higher-quality outreach and planning. The contract will be in effect to cover the full outreach period, including NRFU. This contract is anticipated to be finalized in August 2019.

California Housing and Population Sample Enumeration

The California Housing and Population Sample Enumeration (CHPSE) survey, managed by the Department of Finance's Demographic Research Unit (DRU), will ensure California has accurate and reliable data about the State's population, which is critical for allocation of not just federal, but also state resources. On June 10, 2019, RAND Corporation (RAND) entered into a contract with the Census Office to bring their in-house statistical expertise to co-develop the sampling frame and survey design. RAND also plans to retain survey statisticians from the UCLA Center for California Population Research on the CHPSE project for additional validation of the design and analysis. Other expertise will be drawn from the Institute for Social Research at the University of Michigan and retired Census Bureau statisticians who were involved with prior post-enumeration surveys.

RAND is preparing to conduct the survey in mid-May 2020, thus allowing the CHPSE survey period to be closely aligned with the Census Bureau data collection period. This is important in order to meet another goal of the study: to measure the effectiveness of Census Office's outreach efforts, which relies on having comparable data.

The Census Office, as the contracting entity, will be invoiced for payments on a quarterly basis. No payments have been issued at this time. The following table shows the expenditures, encumbrances and remaining balance for CHPSE.

	Funded Amount	Expended	Encumbered	Available Balance
CHPSE	\$ 5,295,000	\$ -	\$ 4,999,289	\$ 295,711
Total:	\$ 5,295,000	\$ -	\$ 4,999,289	\$ 295,711

The remaining balance is Department of Finance - Demographic Research Unit administrative costs.

Contingencies and Emergencies

The Census Office previously dedicated \$1 million to allow for contingencies and emergencies that may result from unanticipated outreach challenges during the enumeration period. Through the Budget Act of 2019, the Census Office has allocated

\$10 million for NRFU activities to re-deploy and/or add money for specific outreach and media strategies. The Census Office is committed to quickly and thoroughly addressing misinformation campaigns and other tactics, as well as formal federal policies, that seek to dissuade or block census participation. Developments surrounding the citizenship question, for instance, which ultimately will not be included in the Census 2020 questionnaire, demonstrate the need for continuous education and assurances about privacy and data security for individuals who participate in the census.

As part of this allocation, the previously dedicated \$1 million has been moved into the Administration line item.

Administration

The \$187.2 million Census funding plan for statewide outreach and coordination includes language for the funding to be spent and encumbered over four fiscal years. As part of staffing the Census Office's operation, the California Government Operations Agency (GovOps) has established an administrative budget unique in nature for this multi-year operation. Administrative costs are currently nine percent of the total budget and will continue to be less than ten percent for the duration of the Census Office operation.

The table below shows the administrative costs for the Census Office's operation.

	FY 17-18*	FY 18-19	FY 19-20	FY 20-21	4-Year Totals
Administrative Staffing	\$ 1,000,000	\$ 1,497,000	\$ 2,075,000	\$ 2,005,000	\$ 6,577,000
Administrative OE&E **	\$ 1,750,000	\$ 1,279,000	\$ 5,267,000	\$ 1,158,000	\$ 9,454,000
Total:	\$ 2,750,000	\$ 2,776,000	\$ 7,342,000	\$ 3,163,000	\$ 16,031,000

*Includes the Administrative portion of the organization and planning appropriation provided through the Governor's Office of Planning and Research.

**The State is funding all costs related to SwORD through the Administrative Budget.

The table below shows the expenditures, encumbrances and remaining balance for the Census Office's operation.

	4-Year Funded Amount	Expended	Encumbered	Remaining Balance
Administrative Staffing	\$ 6,577,000	\$ 1,722,271	\$ -	\$ 4,854,729
Administrative OE&E	\$ 9,454,000	\$ 2,407,439	\$ 1,722,847	\$ 5,323,714
Total:	\$ 16,031,000	\$ 4,129,710	\$ 1,722,847	\$ 10,178,443

California Complete Count Committee

On April 30, 2019, Governor Newsom appointed California Secretary of State Alex Padilla as the Chair of the California Complete Count Committee (Committee), succeeding GovOps Secretary Marybel Batjer. In addition, two new committee members were appointed to fill vacancies: Alma Hernandez, Executive Director of the Service Employees International Union California State Council, who was appointed by Assembly Speaker Anthony Rendon; and Robert Smith, Chairman of the Pala Band of Mission Indians, who was appointed by Governor Newsom.

In its advisory role, the Committee has worked on its first quarter goal "Get Smart" since the April 2019 Report. The Census Office hosted several webinars at the request of committee members, which also included interested stakeholders. The webinars

provided education on topics identified as priorities including enumeration in areas recovering from disaster, cybersecurity, and engaging with individuals with disabilities. Currently, the committee members are working on their second quarter goal, “Document Your Influence” wherein committee members provide information to the Census Office about their networks that reach HTC populations. Further details about the Committee activities can be found in the June 30, 2019, Interim Report to the Governor at census.ca.gov/reports/.

Statewide Outreach and Rapid Deployment

The Statewide Outreach and Rapid Deployment (SwORD) mapping portal continues to roll out with further enhancements to best serve the contracted partners and the goals of ongoing data monitoring for rapid response to achieve a complete count. SwORD will be integrated with the PDI data in fall 2019 once the contract is finalized.

Staffing and Organization

As anticipated with the ramping up of activity, the Census Office staff has grown to 36 approved positions reflected in the Census Office's organization chart (please see Exhibit F). Since the April 2019 Report, new positions have been created to provide appropriate levels of staffing coverage through existing funding and the Budget Act of 2019. In addition, the Census Office recognized the benefits of some restructuring as the complete count effort moves from the capacity building phase to the education and activation phase. This will better suit workflow demands and maximize capacity. The positions are:

- Regional Program Manager for Region 5 - Central Coast (new position)
- Data Analyst (new position)
- Deputy Director of Statewide Initiatives (formerly combined with Deputy Director of Outreach)
- Tribal Liaison (formerly combined with Deputy Director of Outreach)
- Assistant Deputy Director of External Affairs and Communication (formerly a Lead Public Information Officer position)

The Census Office is actively working to fill the vacancies noted in the organizational chart in a timely manner.

Finally, GovOps Secretary Batjer was appointed by Governor Newsom to serve in a new role as President of the California Public Utilities Commission beginning on August 1, 2019. GovOps Undersecretary Julie Lee will serve as Acting Secretary until a new secretary is selected.

Administrative Support

The California State University, Sacramento, Center for Collaborative Policy (CCP) continues to support the Census 2020 efforts in the form of facilitation with stakeholder engagement during the statewide coverings and implementation workshops in 2019, Tribal Government consultations, the Statewide Outreach and Communication Strategy

(SOCS) report, as well as governance and facilitation support for the CCCC. The total contracted amount with CCP for the two years remains \$1.48 million.

Transparency, Reporting and Accountability

The Census Office is fully committed to operating in an open, transparent and accountable manner. This includes regular updates to the state Census website (census.ca.gov) and direct communication with stakeholders in local and Tribal Governments, CBOs, Census Bureau, the Legislature, key partners, and the media. The communication channels and frequency are evolving to meet the various stages of the complete count effort. In addition, the Census Office participated in several informational hearings before the Legislative Select Committees on the Census. The Census Office will observe these and other practices to share financial information and key milestones via the website, quarterly reports to the Legislature and bi-annual reports to the Governor. In addition, the Census Office will collaborate with the Office of State Audits and Evaluations for oversight of financial contracts and Census Office resource use.

III. NEXT STEPS

The Census Office will submit its next quarterly report to the Joint Legislative Budget Committee, the Assembly Select Committee on the Census and the Senate Select Committee on 2020 U.S. Census in October 2019. This report will include details on the allocation schedule for funding provided through the Budget Act of 2019. Pursuant to Section 45, Chapter 53 of Statutes of 2018 (Senate Bill 866; Committee on Budget), this report will also include details on the Census Office's funding and infrastructure actions during the third quarter of the calendar year. Allocations will be provided on a regional basis as feasible.

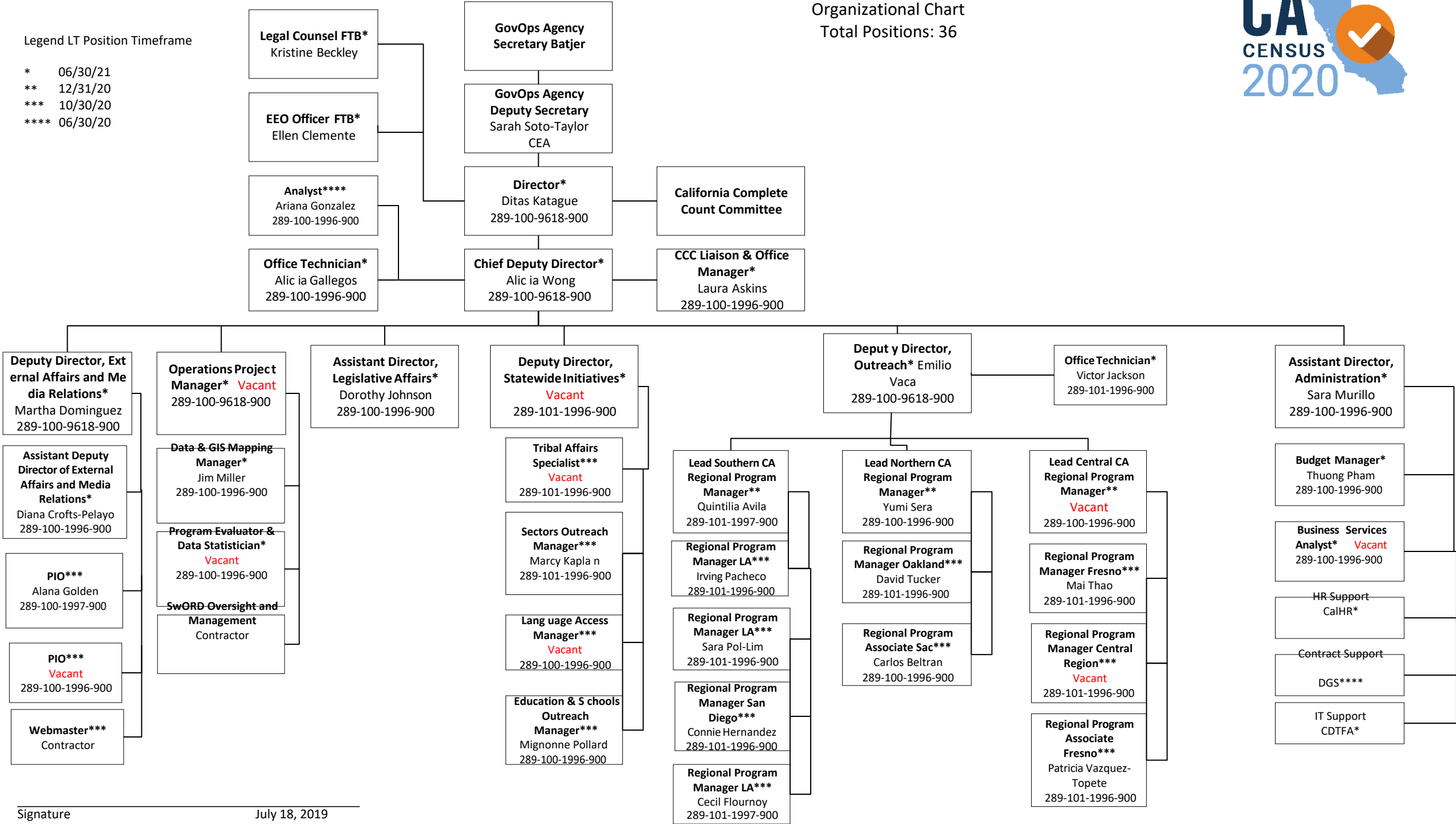
APPENDIX D: CCC Census 2020 Organizational Chart

California Complete Count – Census 2020
Organizational Chart
Total Positions: 36



Legend LT Position Timeframe

- * 06/30/21
- ** 12/31/20
- *** 10/30/20
- **** 06/30/20



Signature _____ July 18, 2019

APPENDIX E: 2018 Regional Readiness/Needs Assessment Convenings and Tribal Consultations

City	Date	Counties Covered
Sacramento	April 18, 2018	Sacramento, Yolo, Solano, Alpine, El Dorado, Placer
Oakland	May 1, 2018	Alameda, Contra Costa
Fresno	May 8, 2018	Fresno, Kings, Tulare
Bakersfield	May 9, 2018	Kern
Ukiah	May 16, 2018	Mendocino, Sonoma, Lake, Napa
Bayside	May 17, 2018	Humboldt, Del Norte, Trinity
Redding	May 18, 2018	Shasta, Butte, Trinity, Colusa, Glenn, Lassen, Modoc, Nevada, Plumas, Sierra, Sutter, Tehama, Yuba
Riverside	May 23, 2018	Riverside, San Bernardino
Palm Desert	May 24, 2018	San Bernardino, Riverside
Salinas	May 31, 2018	Monterey, Santa Cruz, San Benito
Mountain View	June 1, 2018	Santa Clara, San Mateo
Lompoc	June 6, 2018	Santa Barbara, San Luis Obispo
El Centro	June 7, 2018	Imperial
Modesto	June 18, 2018	Stanislaus, Amador, Calaveras, Madera, Mariposa, Merced, San Joaquin, Tuolumne
San Gabriel Valley	June 26, 2018	Los Angeles
San Fernando Valley	June 27, 2018	Los Angeles
San Bernardino	June 28, 2018	San Bernardino, Inyo
Santa Ana	June 29, 2018	Orange
San Diego	July 10, 2018	San Diego
Oxnard	July 11, 2018	Ventura
San Francisco	July 12, 2018	San Francisco, San Mateo, Alameda, Marin, Contra Costa, Solano, Santa Clara
South Los Angeles	August 1, 2018	Los Angeles
Long Beach	August 2, 2018	Los Angeles
Tribal Consultation Pala, CA	October 10, 2018	Southern California Regional Consultation
Tribal Consultation Trinidad, CA	October 11, 2018	Northern California Regional Consultation
Tribal Consultation Sacramento, CA	November 15, 2018	Central California Regional Consultation

APPENDIX F: 2019 Implementation Plan Workshops to Date

City	Date	Region: Counties Covered
Palm Desert	June 5, 2019	Region 7: Riverside, San Bernardino
Riverside	June 12, 2019	Region 7: Riverside, San Bernardino
San Bernardino	June 14, 2019	Region 7: Riverside, San Bernardino
Sacramento	June 17, 2019	Region 1: Butte, Colusa, El Dorado, Glenn, Lassen, Modoc, Nevada, Placer, Plumas, Sacramento, Shasta, Sierra, Siskiyou, Sutter, Tehama, Yolo, Yuba
Richmond	June 19, 2019	Region 3: Alameda, Contra Costa, Marin, San Francisco, San Mateo, Santa Clara, Solano
Red Bluff	June 24, 2019	Region 1: Butte, Colusa, El Dorado, Glenn, Lassen, Modoc, Nevada, Placer, Plumas, Sacramento, Shasta, Sierra, Siskiyou, Sutter, Tehama, Yolo, Yuba
Salinas	July 17, 2019	Region 5: Monterey, San Benito, San Luis Obispo, Santa Barbara, Santa Cruz, Ventura
San Francisco	July 25, 2019	Region 3: Alameda, Contra Costa, Marin, San Francisco, San Mateo, Santa Clara, Solano
Eureka	July 31, 2019	Region 2: Del Norte, Humboldt, Lake, Mendocino, Napa, Sonoma, Trinity
Santa Rosa	October 2, 2019	Region 2: Del Norte, Humboldt, Lake, Mendocino, Napa, Sonoma, Trinity
Fresno	August 6, 2019	Region 6: Fresno, Inyo, Kern, Kings, Tulare
Bakersfield	August 7, 2019	Region 6: Fresno, Inyo, Kern, Kings, Tulare
El Centro	August 14, 2019	Region 10: Imperial, San Diego
San Diego	August 16, 2019	Region 10: Imperial, San Diego
Santa Ana	August 23, 2019	Region 9: Orange
Redwood City	September 26, 2019	Region 3: Alameda, Contra Costa, Marin, San Francisco, San Mateo, Santa Clara, Solano
Merced-Stockton	October 8, 2019	Region 4: Alpine, Amador, Calaveras, Madera, Mariposa, Merced, Mono, San Joaquin, Stanislaus, Tuolumne
San Luis Obispo	October 15, 2019	Region 5: Monterey, San Benito, San Luis Obispo, Santa Barbara, Santa Cruz, Ventura
Oxnard	TBD	Region 5: Monterey, San Benito, San Luis Obispo, Santa Barbara, Santa Cruz, Ventura
Los Angeles	TBD	Region 8: Los Angeles

APPENDIX G. CCCC Role and Membership

California Complete Count Committee

<https://census.ca.gov/about-the-committee/>

The main purpose of the California Complete Count Committee is to assist in the development of a state Census strategy for a complete and accurate count of California's population. Members help develop a targeted outreach campaign focused on hard-to-count communities, including individuals and families living in hard-to-find housing units, people who speak limited or no English, disabled and elderly residents, homeless communities and new immigrants.

California Complete Count Committee Role

- Communicate and raise awareness of the importance of Census campaign efforts to community leaders and guide them in developing strategies for a complete and accurate count in their respective communities.
- Provide expertise and insight to develop an outreach strategy leveraging existing community partnerships.
- Participate as experts, or collaborate with other experts, on Census established working groups.
- Identify effective outreach strategies and provide recommendations to California Census 2020 staff.
- Collaborate with public and private partners and community-based organizations to support Census outreach

California Complete Count Committee Membership

Alex Padilla, 46, was elected California's Secretary of State in November 2014, becoming the first Latino elected to that office. He currently serves as co-chair of the National Association of Latino Elected and Appointed Officials (NALEO) Educational Fund's bipartisan National Latino Commission on Census 2020. Padilla previously served in the California State Senate (2006-2014) and on the Los Angeles City Council (1999-2006) where he served as council president. Padilla earned a degree in mechanical engineering from the Massachusetts Institute of Technology. This position does not require Senate confirmation and there is no compensation. Padilla is a Democrat

Gita Amar, 48, of Los Angeles, was appointed by Governor Jerry Brown. Amar has been senior director at PMK BNC since 2016. She was a self-employed senior media relations consultant from 2004 to 2016, a senior consulting producer at Fleishman-Hillard Communications from 2001 to 2016 and a senior media relations consultant at Golin Harris from 2004 to 2006. Amar was a producer at National Public Radio from 2002 to 2003 and an executive producer at Fox News Channel and Fox News Online from 1996 to 2001. She is a member of the Asian American Journalists Association. Amar earned a Juris Doctor degree from the Syracuse University College of Law and a Master of Arts degree in television, radio and film from the Syracuse University S.I. Newhouse School of Communications.

Tho Vinh Banh, 44, of Sacramento, was appointed by Governor Jerry Brown. Banh has been supervising attorney and supervisor of the multicultural affairs outreach unit at Disability Rights California since 2015, where she has held several positions since 2001, including staff attorney and advocate. She was a legal intern at the Lindesmith Center, Drug Policy Foundation through the University of California, Hastings College of the Law's Civil Justice Clinic in 2001. Banh earned a Juris Doctor degree from the University of California, Hastings College of the Law.

Carolyn Coleman, 56, of Sacramento, was appointed by Governor Jerry Brown. Coleman has been executive director at the League of California Cities since 2016. She was senior executive, director of federal advocacy at the National League of Cities from 2006 to 2016, vice president and of counsel at B&D Consulting from 2005 to 2006 and deputy mayor and director of the Department of Metropolitan Development for the City of Indianapolis from 2000 to 2005. Coleman was an attorney at Baker and Daniels from 1997 to 2000. She earned a Juris Doctor degree from the Indiana University School of Law.

Kathleen Domingo, 43, of Pasadena, was appointed by Governor Jerry Brown. Domingo has been a director in the Office of Life, Justice and Peace at the Archdiocese of Los Angeles since 2013. She earned a Master of Arts degree in theology from the John Paul II Institute.

Basim Elkarra, 38, of Sacramento, was appointed by Governor Jerry Brown. Elkarra has been an executive director at the Sacramento Valley Chapter of the Council on American-Islamic Relations since 2004. He is a member of the Twin Rivers Unified School District Board of Trustees, chair of the City of Sacramento Community Policy Review Commission and an executive board member of the California Democratic Party.

Amy Fairweather, 53, of San Francisco, was appointed by Governor Jerry Brown. Fairweather has been a policy director at Swords to Plowshares' Institute for Veteran Policy since 2005. She was a policy associate at the Trauma Foundation from 1999 to 2003. Fairweather is a member of the California Association of Veteran Service Organizations. She earned a Juris Doctor degree from the University of California, Hastings College of the Law.

Nicholas Hatten, 43, of Stockton, was appointed by Governor Jerry Brown. Hatten has been executive director at the San Joaquin Pride Center since 2011.

Alma Hernandez, 39, of Glendale, was appointed by Assembly Speaker Anthony Rendon to the California Complete Count Committee. Hernandez has been executive director of the Service Employees International Union California State Council since 2016. She was political director of the Service Employees International Union California State Council from 2010 to 2016. Hernandez held multiple positions in the California Legislature from 2001 to 2010, including legislative and district director, press secretary, legislative aid and field representative. This position does not require Senate confirmation and there is no compensation. Hernandez is a Democrat

Lisa Hershey, 54, of Sacramento, was appointed by Governor Jerry Brown. Hershey has been an executive director at Housing California since 2016, where she was associate director in 2016 and a sustainable communities coordinator from 2014 to 2015. She was an associate and program manager-director at the Public Health Institute from 2009 to 2014 and a chief in the Office for Obesity Prevention at the California Department of Public Health from 2007 to 2009. Hershey served in several positions at the California Department of Health Services from 1993 to 2007, including special assistant to the state public health officer, chief, program coordinator and program director. She was a health educator at Sacramento County Health and Human Services from 1990 to 1993 and health educator specialist at the California Department of Health Services from 1988 to 1990. Hershey earned a Master of Public Health degree from the Loma Linda University School of Public Health.

Loren Kaye, 61, of Sacramento, was appointed by Governor Jerry Brown. Kaye has been a foundation president at the California Chamber of Commerce since 2006. He was a partner at KP Public Affairs from 1996 to 2005, an undersecretary at the California Trade and Commerce Agency from 1993 to 1996 and cabinet secretary in the Governor's Office from 1991 to 1992. Kaye was a director of issues and research for Governor Pete Wilson's campaign in 1990, a deputy cabinet secretary in the Governor's Office from 1987 to 1989 and director of writing and research for Governor George Deukmejian's campaign in 1986. He was a policy advocate at the California Taxpayers

Association from 1983 to 1985, where he was a senior research analyst from 1981 to 1982. Kaye was a research director for Pete Wilson's Senate Campaign Committee in 1982 and a policy analyst for the California State Senate Republican Caucus in 1980.

Jesus Martinez, 57, of Clovis, was appointed by Governor Jerry Brown. Martinez has been a founding member and chair at the Central Valley Immigrant Integration Collaborative since 2014. He was a coordinator of the Central Valley DACA Project at the Immigrant Legal Resource Center from 2012 to 2015, an independent consultant from 2008 to 2013 and a postdoctoral fellow at El Instituto de Investigaciones Dr. Jose Maria Luis Mora from 2009 to 2010. Martinez was a director general at the Michoacán Institute for Michoacanos Abroad from 2007 to 2008, state legislator at the Michoacán State Congress from 2005 to 2007 and an assistant professor in the Chicano and Latin American Studies Department at California State University, Fresno from 2000 to 2004. He earned a Doctor of Philosophy degree in ethnic studies and a Master of Arts degree in Latin American studies from the University of California, Berkeley.

Gerald McIntyre, 74, of Los Angeles, was appointed by Governor Jerry Brown. McIntyre has been special counsel at Justice in Aging, formerly the National Senior Citizens Law Center, since 2016, where he was directing attorney from 1993 to 2016. He was a lecturer and staff attorney at Cornell Law School from 1991 to 1992. McIntyre held several positions at the Monroe County Legal Assistance Corporation from 1973 to 1979, including counsel and project director of the Southern Tier Legal Services Unit and of the Flood Disaster Relief Project. McIntyre was a staff attorney at Bronx Legal Services from 1970 to 1973 and a Peace Corps volunteer in Guatemala from 1967 to 1970. He earned a Bachelor of Laws degree from Yale Law School.

Eloy Ortiz Oakley, 52, of Long Beach, was appointed by Governor Jerry Brown. Oakley has served as chancellor of the California Community Colleges since 2016. He was superintendent and president at Long Beach City College from 2007 to 2016, where he was executive vice president of administrative services from 2004 to 2006 and vice president of administrative services from 2002 to 2004. He was vice president of college services at Oxnard College from 2001 to 2002 and an assistant vice president at Keenan and Associates from 1999 to 2001. Oakley was a program coordinator and adjunct instructor at Golden West College from 1994 to 1999 and a manager of risk services at the Coast Community College District from 1993 to 1999. He was appointed by Governor Brown to the University of California Board of Regents in 2014. Oakley is a member of the LA 2028 Board of Directors and Rework America Task Force and a board member of the California Chamber of Commerce and the College Futures Foundation. He earned a Master of Business Administration degree from the University of California, Irvine.

Tom Saenz, 51, of Alhambra, was appointed by Governor Jerry Brown. Saenz has been president and general counsel at MALDEF since 2009. He was counsel to Los Angeles Mayor Antonio Villaraigosa from 2005 to 2009. Saenz is a board member of the Campaign for College Opportunity, Los Angeles County Board of Education, Leadership Conference for Civil and Human Rights and the National Hispanic Leadership Agenda. He earned a Juris Doctor degree from Yale Law School.

Lee Salter, 76, of Redding, was appointed by Governor Jerry Brown. Salter was president and chief executive officer at the McConnell Foundation from 1989 to 2016 and an attorney at Carr, Kennedy, Peterson from 1977 to 1989. He earned a Juris Doctor degree from the University of the Pacific, McGeorge School of Law.

Robert Smith, 58, of Pala, has been appointed to the California Complete Count Committee. Smith has been chairman of the Pala Band of Mission Indians since 1990. He was vice-chairman of the Pala Band of Mission Indians from 1987 to 1989. Smith is a member of the San Diego County Farm Bureau, the Southern California Tribal Chairmen's Association, the California Tribal Business Alliance and the California Tribal Families Coalition. This position does not require Senate confirmation and there is no compensation. Smith is a Democrat.

Regina Brown Wilson, 41, of Sacramento, was appointed by Governor Jerry Brown. Wilson has been a director at California Black Media since 2013. She was a statewide education and faith-based outreach manager for Census 2010 and head of communications in the California Secretary of Education's Office from 2007 to 2008.

Christopher Wilson, 51, of San Diego, was appointed by Senate President pro Tempore Toni G. Atkins. Wilson has been an associate director at Alliance San Diego since 2015, where he was a director of civic engagement from 2010 to 2015. He was principal consultant at CRW Enterprises from 2006 to 2010, general manager at KeytoChange Publishing Inc. from 2003 to 2006 and an independent consultant at Jones and Associates Consulting Inc. from 2002 to 2009. Wilson was a senior field service engineer at ITT Gilfillan from 1992 to 1999 and an air traffic control RADAR technician for the U.S. Marine Corps from 1985 to 1992. He is a member of the Urban League of San Diego County Board of Directors and the Engage San Diego Mobilization Fund.

Tom K. Wong, 36, of San Diego, was appointed by Governor Jerry Brown. Wong has been an associate professor at the University of California, San Diego since 2017, where he served as an assistant professor from 2012 to 2016. He served as an advisor to the White House Initiative on Asian Americans and Pacific Islanders in 2016. Wong is a member of the California Immigrant Policy Center, New American Leaders and Alliance San Diego. He earned a Doctor of Philosophy

degree in political science from the University of California, Riverside.

Past committee members:

Daniel Torres (Committee Chair), 44, of Sacramento, was appointed by Governor Jerry Brown. Torres has served as director of immigrant integration in the Office of Governor Edmund G. Brown Jr. since 2016. He was chief of the Immigration Branch at the California Department of Social Services' Welfare to Work Division from 2015 to 2016. He was deputy director of programs and new initiatives and program director at California Rural Legal Assistance, Inc. from 2010 to 2015. Torres was an attorney at the Immigrant Legal Resource Center from 2008 to 2010, at the U.S. Court of Appeals, Ninth Circuit from 2005 to 2008 and at the California Rural Legal Assistance Foundation from 2001 to 2005. He was a clinical instructor at the University of California, Davis School of Law Immigration Law Clinic from 2004 to 2005. Torres earned a Juris Doctor degree from the University of California, Davis School of Law.

Alex Johnson, 37, of Los Angeles, was appointed by Governor Jerry Brown. Johnson has been managing director at Californians for Safety and Justice since 2017. He was executive director at Children's Defense Fund-California from 2014 to 2016. Johnson was assistant senior deputy for education and public safety in the Office of Los Angeles County Supervisor Mark Ridley-Thomas from 2012 to 2014, where he was deputy for education and public safety from 2010 to 2012. He was an attorney at the New York City Department of Education from 2008 to 2010 and an assistant district attorney in the Bronx District Attorney's Office from 2005 to 2008. Johnson is president of the Los Angeles County Board of Education and a member of the Arts for Incarcerated Youth Network Board of Directors and the Wiley Center for Speech and Language Development Board. He earned a Juris Doctor degree from the American University College of Law.

Margie Mejia, 61, of Atwater, was appointed by Governor Jerry Brown. Mejia has been chairwoman at the Lytton Rancheria of California since 1995.

Angie Wei, 47, of Sacramento, was appointed by Governor Jerry Brown. Wei has been chief of staff at the California Labor Federation since 2011, where she has held several positions since 2000, including legislative director and public policy director. She was a program associate at PolicyLink in 2000, policy analyst at the California Immigrant Welfare Collaborative from 1998 to 1999 and policy director at the Northern California Coalition for Immigrant Rights from 1996 to 1998. Wei earned a Master of Public Policy degree from the Harvard University, Kennedy School of Government.

Marybel Batjer, 63, of Sacramento, has been appointed chair of the California Complete Count Census Committee. Batjer has served as secretary of the California Government Operations Agency since 2013. She served as cabinet secretary in the Office of Governor Arnold Schwarzenegger from 2003 to 2005, chief of staff in the Office of Nevada Governor Kenny Guinn from 2000 to 2003 and undersecretary at the California Business, Transportation and Housing Agency from 1997 to 1998. Batjer was chief deputy director of the California Department of Fair Employment and Housing from 1992 to 1997 and special assistant to the U.S. Secretary of the Navy from 1989 to 1992. She was a national security affairs special assistant for President Ronald Reagan and deputy secretary in the Governor's Office from 1991 to 1992. Kaye was a director of issues and research for Governor Pete Wilson's campaign in 1990, a deputy cabinet secretary in the Governor's Office from 1987 to 1989 and director of writing and research for Governor George Deukmejian's campaign in 1986. He was a policy advocate at the California Taxpayers Association from 1983 to 1985, where he was a senior research analyst from 1981 to 1982. Kaye was a research director for Pete Wilson's Senate Campaign Committee in 1982 and a policy analyst for the California State Senate Republican Caucus in 1980.

Efrain Escobedo, 43, of Pomona, was appointed by Assembly Speaker Anthony Rendon. Escobedo has been vice president for education and immigration programs at the California Community Foundation since 2015. He was manager of government and legislative affairs for the Los Angeles County Clerk's Office from 2009 to 2015 and senior director of civic engagement at the NALEO Education Fund from 2008 to 2009.

Kate Kendell, 57, of San Francisco, was appointed by Governor Jerry Brown. Kendell has been executive director at the National Center for Lesbian Rights since 1994. She was a staff attorney at the American Civil Liberties Union of Utah from 1990 to 1994. She earned a Juris Doctor degree from the University of Utah College of Law.

John Joanino, 25, of Los Angeles, was appointed by Governor Jerry Brown. Joanino has been a senior communications associate at Advancement Project California since 2017. He was an account associate at RALLY from 2016 to 2017 and a partnerships associate at Omaze.com from 2014 to 2016.

APPENDIX H: LACAP Required Primary Languages by Area

This table includes the list of languages required to be included in activities, as determined by contractors by geographic data area, as extracted from the Language and Communication Access Plan. The list of languages not covered indicates the languages that did not meet the methodology threshold for coverage.

Geographic Data Area	Required Languages	Languages not required that have at least 100 estimated speakers
Alameda	Spanish, Chinese, Cantonese, Tagalog, Vietnamese, Mandarin, Korean, Punjabi, Hindi, Arabic, Farsi	Telugu, Filipino, Tamil, Russian, Portuguese, Japanese, Amharic, Khmer, Burmese, Gujarati, Urdu, French, Min Nan Chinese, Iu Mien, Tigrinya, Thai, Nepali, Other Central and South American languages, Indonesian, German, Lao, Bengali, Pashto, Mongolian, Italian, Bosnian, Swahili, Marathi, Romanian, Samoan, Kannada, Karen languages, Cebuano, Malayalam, Bulgarian, Marshallese, Hmong, Ilocano, Turkish, Igbo, Other languages of Asia, Other Eastern Malayo-Polynesian languages, Dari, Other Afro-Asiatic languages, Greek, Hungarian, Ukrainian, Polish, Other Philippine languages, Haitian, Tibetan, Yoruba, Tongan, India N0E0C0
Alpine, Amador, Calaveras, Inyo, Mariposa, Mono & Tuolumne	Spanish	Korean
Butte	Spanish, Hmong	Chinese, Tagalog, Iu Mien, Japanese, Vietnamese, Punjabi, Russian, Lao, Filipino, Arabic, Korean
Colusa, Glenn, Tehama & Trinity	Spanish	Korean, Lao, Cantonese, Vietnamese

Geographic Data Area	Required Languages	Languages not required that have at least 100 estimated speakers
Contra Costa	Spanish, Tagalog, Chinese, Cantonese, Vietnamese, Mandarin, Farsi, Korean	Russian, Hindi, Portuguese, Punjabi, Arabic, Filipino, Japanese, Telugu, Urdu, Dari, Nepali, French, Thai, Lao, Tamil, Bengali, Italian, German, Lu Mien, Min Nan Chinese, Gujarati, Khmer, Igbo, Amharic, Burmese, Other Afro-Asiatic languages, Bulgarian, Polish, Samoan, Dutch, Romanian, Turkish, Tibetan, Tongan, Other Eastern Malayo-Polynesian languages, Indonesian, Greek, Hmong, Pashto, Croatian, Armenian, Haitian, Mongolian, Other Niger-Congo languages, Malayalam, Hebrew, Hungarian
Del Norte, Lassen, Modoc, Plumas & Siskiyou	Spanish	Vietnamese, Hmong
El Dorado	Spanish	Farsi, Mandarin, Hmong, Tagalog, Hindi, Korean, Bosnian, Hebrew
Fresno	Spanish, Hmong, Punjabi	Lao, Khmer, Vietnamese, Armenian, Chinese, Tagalog, Arabic, Hindi, Korean, Japanese, Other Central and South American languages, Farsi, Russian, Mandarin, Urdu, Filipino, Gujarati, Cantonese, Portuguese, Ukrainian, Thai, Lu Mien, Haitian, Dari, Burmese, French, German, Chuukese
Humboldt	Spanish	Hmong, Chinese, Portuguese, Thai
Imperial	Spanish	Korean, Chinese, Tagalog, Arabic, Japanese
Kern	Spanish, Punjabi	Tagalog, Chinese, Arabic, Vietnamese, Korean, Ilocano, Filipino, Japanese, Cantonese, Mandarin, Khmer, Russian, Thai, Gujarati, French, Farsi, Bengali

Geographic Data Area	Required Languages	Languages not required that have at least 100 estimated speakers
Kings	Spanish	Tagalog, Portuguese, Vietnamese, Chinese, Ganda, Filipino, Japanese
Lake & Mendocino	Spanish	French, Tagalog
Los Angeles	Spanish, Korean, Chinese, Armenian, Mandarin, Tagalog, Vietnamese, Cantonese, Farsi, Japanese, Russian, Arabic, Khmer, Thai, Filipino	Min Nan Chinese, French, Indonesian, Hindi, Hebrew, Urdu, Punjabi, Bengali, Portuguese, Gujarati, Italian, German, Amharic, Burmese, Telugu, Tamil, Turkish, Romanian, Ilocano, Polish, Samoan, Cebuano, Sinhala, Greek, Lao, Ukrainian, Dari, Hungarian, Croatian, Nepali, Tongan, Other Central and South American languages, Mongolian, Tigrinya, Malayalam, Assyrian Neo-Aramaic, Swedish, Igbo, Other languages of Asia, Yoruba, India N0E0C0, Czech, Dutch, Other Indo-Iranian languages, Other and unspecified languages, Haitian, Pashto, Other Philippine languages, Lithuanian, Serbian, Hmong, Other Indo-European languages, Bosnian, Bulgarian, Marathi, Other Afro-Asiatic languages, Kannada, Other Bantu languages, Ganda, Chaldean Neo-Aramaic, Karen languages, Swahili, Kurdish, Malay, Akan (incl0 Twi), Other Eastern Malayo-Polynesian languages, Tibetan, Yiddish, Chamorro, Norwegian, Other Native North American languages, Danish, Swiss German, Albanian
Madera	Spanish	Punjabi, Greek, Arabic, Other Central and South American languages
Marin	Spanish	Vietnamese, Farsi, Russian, Chinese, Tagalog, French, Japanese, Cantonese, Portuguese, Mandarin, Arabic, Korean, Italian, Hindi, Haitian, German, Telugu
Merced	Spanish, Punjabi, Portuguese, Hmong	Iu Mien, Lao, Tagalog, Arabic, Vietnamese, Russian, Chinese, Khmer, Cantonese, Filipino, Ganda, Japanese, Mandarin

Geographic Data Area	Required Languages	Languages not required that have at least 100 estimated speakers
Monterey & San Benito	Spanish	Tagalog, Korean, Vietnamese, Other Central and South American languages, Japanese, Cantonese, Chinese, Filipino, Arabic, German, Portuguese, Ilocano, Hindi, Italian, French, Russian, Punjabi, Mandarin, Farsi, Cebuano, Gujarati, Hmong
Napa	Spanish, Tagalog	Filipino, Vietnamese, Korean, Thai, Portuguese
Nevada and Sierra	Spanish	Mandarin
Orange	Spanish, Vietnamese, Korean, Chinese, Farsi, Tagalog, Mandarin, Arabic, Japanese, Khmer, Cantonese, Min Nan Chinese	Russian, Filipino, Hindi, Gujarati, Thai, French, Punjabi, Urdu, Romanian, Armenian, Indonesian, German, Polish, Portuguese, Lao, Tamil, India N0E0C0, Telugu, Bengali, Amharic, Italian, Burmese, Hmong, Pashto, Dutch, Hungarian, Samoan, Sinhala, Tongan, Other and unspecified languages, Greek, Marathi, Turkish, Ilocano, Nepali, Hebrew, Chamorro, Dari, Cebuano, Czech, Other languages of Asia, Somali, Malayalam, Ukrainian, Tigrinya, Other Central and South American languages, Swedish, Swahili, Albanian, Malay
Placer	Spanish	Tagalog, Farsi, Chinese, Korean, Russian, Mandarin, Vietnamese, Filipino, Arabic, Punjabi, Ukrainian, French, Japanese, Hindi, Cantonese, Romanian, Malayalam, Italian, Gujarati, Ilocano
Riverside	Spanish, Tagalog, Vietnamese, Chinese, Korean, Arabic	Mandarin, Punjabi, Filipino, Khmer, Farsi, Cantonese, Gujarati, Thai, Japanese, Urdu, Romanian, Lao, Hmong, Min Nan Chinese, Portuguese, Hindi, French, German, Russian, Indonesian, Italian, Armenian, Pashto, Greek, Dutch, Ilocano,

Geographic Data Area	Required Languages	Languages not required that have at least 100 estimated speakers
		Bengali, Telugu, Swahili, Sinhala, Samoan, Hebrew, Akan (incl0 Twi), Bosnian, Turkish, Hungarian, Burmese, Tongan
Sacramento	Spanish, Vietnamese, Chinese, Russian, Hmong, Tagalog, Punjabi, Cantonese, Ukrainian, Hindi, Korean, Lu Mien	Farsi, Mandarin, Arabic, Romanian, Lao, Armenian, Filipino, Japanese, Portuguese, Dari, Thai, Khmer, Urdu, French, Pashto, Amharic, Gujarati, Italian, Other Eastern Malayo- Polynesian languages, Ilocano, Telugu, Burmese, Cebuano, Min Nan Chinese, Greek, Bengali, German, Mongolian, Indonesian, Marshallese, Turkish, Bosnian, Tongan, Polish, Other languages of Asia, Malayalam, Tigrinya, Nepali, Tamil, Samoan, Serbian, Hungarian, Other Afro-Asiatic languages, Igbo, India N0E0C0, Yoruba
San Bernardino	Spanish, Chinese, Tagalog, Vietnamese, Korean, Arabic, Mandarin	Indonesian, Filipino, Cantonese, Thai, Japanese, Khmer, Farsi, Punjabi, Min Nan Chinese, Gujarati, Hindi, Portuguese, Urdu, Russian, Bengali, French, Romanian, Armenian, German, Samoan, India N0E0C0, Ukrainian, Cebuano, Burmese, Italian, Hungarian, Lao, Haitian, Igbo, Hmong, Other Central and South American languages, Polish, Telugu, Ilocano, Hebrew
San Diego	Spanish, Tagalog, Vietnamese, Chinese, Arabic, Korean, Filipino, Farsi, Japanese, Mandarin, Russian, Chaldean Neo-Aramaic	Lao, Assyrian Neo-Aramaic, Cantonese, Italian, Portuguese, Khmer, French, Hindi, Somali, German, Amharic, Thai, Punjabi, Telugu, Ilocano, Gujarati, Min Nan Chinese, Bengali, Swahili, Samoan, Urdu, Polish, Greek, Hebrew, Cebuano, Kurdish, Ukrainian, Hungarian, Dari, Other languages of Asia, Armenian, Romanian, Pashto, Serbian, Karen languages, Burmese, Tamil, Hmong, Other Central and South American languages, Other and unspecified languages, Oromo, Turkish, Tigrinya, Czech, Other Indo-Iranian languages, Marathi, Bulgarian, Tongan, Haitian, Malayalam, Other Philippine languages, Chamorro, Other Afro-Asiatic languages, India N0E0C0, Kannada, Dutch, Indonesian, Serbocroatian, Other Bantu languages

Geographic Data Area	Required Languages	Languages not required that have at least 100 estimated speakers
San Francisco	Cantonese, Chinese, Spanish, Tagalog, Vietnamese, Russian, Mandarin, Korean	Japanese, Filipino, French, Thai, Arabic, Burmese, Hindi, Min Nan Chinese, Italian, Farsi, Armenian, Greek, Indonesian, Portuguese, Khmer, German, Ilocano, Punjabi, Other Central and South American languages, Cebuano, Turkish, Other and unspecified languages, Ukrainian, Lao, Hebrew, Other languages of Asia, Urdu, Amharic, Bulgarian, Mongolian, Other Philippine languages, Gujarati
San Joaquin	Spanish, Tagalog, Punjabi, Khmer, Vietnamese, Hmong	Chinese, Urdu, Filipino, Cantonese, Hindi, Pashto, Lao, Portuguese, Farsi, Ilocano, Cebuano, Arabic, Mandarin, Korean, Japanese, Pakistan NOE0C0, Other Philippine languages, Dari, French, Thai, Russian, India NOE0C0, Armenian, German, Gujarati, Indonesian
San Luis Obispo	Spanish	Tagalog, Chinese, Portuguese, Arabic, Japanese, French, Vietnamese, German, Gujarati, Cantonese, Mandarin, Filipino, Ilocano
San Mateo	Spanish, Tagalog, Chinese, Cantonese, Mandarin	Russian, Japanese, Filipino, Burmese, Hindi, Korean, Arabic, Tongan, Vietnamese, Portuguese, Farsi, Italian, Min Nan Chinese, German, Armenian, French, Punjabi, Gujarati, Thai, Tamil, Ilocano, Indonesian, Greek, Marathi, Turkish, Other languages of Asia, Serbian, Polish, Ukrainian, Other Philippine languages, Amharic, Malayalam, Telugu, Lao, Cebuano, Samoan, Hungarian, Urdu
Santa Barbara	Spanish	Tagalog, Chinese, Vietnamese, Korean, Other Central and South American languages, Japanese, Arabic, German, Mandarin, Filipino, Ilocano, Swiss German, Indonesian, French, Cantonese, Hmong, Bengali, Italian, Thai

Geographic Data Area	Required Languages	Languages not required that have at least 100 estimated speakers
Santa Clara	Spanish, Vietnamese, Chinese, Mandarin, Tagalog, Korean, Cantonese, Japanese, Hindi, Russian, Farsi, Punjabi, Telugu, Filipino	Tamil, Portuguese, Khmer, Min Nan Chinese, Ilocano, Arabic, Gujarati, Thai, Urdu, Amharic, Assyrian Neo-Aramaic, Marathi, French, Malayalam, Italian, Nepali, Kannada, Burmese, Bengali, Romanian, Indonesian, German, Turkish, Cebuano, Lao, Tigrinya, Croatian, Polish, Chaldean Neo-Aramaic, Armenian, Bosnian, Hebrew, Other languages of Asia, Ukrainian, Dari, Konkani, Other Indo-Iranian languages, India N0E0C0, Serbocroatian, Hungarian, Samoan, Bulgarian, Somali, Pashto, Other and unspecified languages, Swedish, Other Eastern Malayo-Polynesian languages, Greek, Other Afro-Asiatic languages, Tongan
Santa Cruz	Spanish	Chinese, Mandarin, Japanese, Tagalog, Portuguese, Cantonese, Other Central and South American languages, Arabic, Korean, Vietnamese, German, Farsi, Dutch
Shasta	Spanish	Chinese, Farsi, Lao, German, Tagalog, Iu Mien, Vietnamese, Italian
Solano	Spanish, Tagalog	Filipino, Punjabi, Vietnamese, Chinese, Korean, Japanese, Mandarin, Hindi, Lao, Arabic, Cantonese, Thai, Urdu, Farsi, Cebuano, Russian, Portuguese, Ilocano, French, Other Philippine languages, German, Marshallese
Sonoma	Spanish	Chinese, Vietnamese, Lao, Khmer, Cantonese, Russian, Tagalog, Korean, Nepali, Farsi, Portuguese, Japanese, Swahili, Arabic, Punjabi, Mandarin, Tigrinya, Thai, French, Hindi, Italian, German, Filipino, Bengali, Turkish, Urdu
Stanislaus	Spanish, Assyrian Neo-Aramaic	Punjabi, Khmer, Arabic, Hindi, Portuguese, Tagalog, Chaldean Neo-Aramaic, Chinese, Vietnamese, Farsi, Lao, Cantonese, Korean, Russian, Urdu, Hmong, German, Romanian, Mandarin, Japanese, Bengali, Filipino, Burmese

Geographic Data Area	Required Languages	Languages not required that have at least 100 estimated speakers
Sutter & Yuba	Spanish, Punjabi	Hmong, Tagalog, Cantonese, Portuguese, Hindi, Chinese, Russian, Vietnamese
Tulare	Spanish	Arabic, Portuguese, Ilocano, Burmese, Tagalog, Chinese, Lu Mien, Punjabi, Hmong, Other languages of Asia, Lao, Filipino, Japanese, Vietnamese, Dutch
Ventura	Spanish, Tagalog	Other Central and South American languages, Vietnamese, Chinese, Korean, Mandarin, Arabic, Farsi, Japanese, Filipino, Punjabi, German, Armenian, Russian, Cantonese, Gujarati, Thai, French, Italian, Tamil, Telugu, Min Nan Chinese, Indonesian, Hebrew, Hindi, Polish, Bengali, Urdu, Pashto, Burmese, Sinhala
Yolo	Spanish, Chinese, Russian	Punjabi, Mandarin, Farsi, Vietnamese, Cantonese, Korean, Nepali, Hindi, Lu Mien, Portuguese, Japanese, Hmong, Urdu, Tagalog, Romanian, Thai, Arabic, Min Nan Chinese

APPENDIX I. California Tribes and Contracts as of May 2019

Tribe	Contract
Cahto Tribe	\$ 2,500
Hoopla Valley Tribe	\$10,000
Karuk Community Development Corporation	\$ 5,000
Morongo Band of Mission Indians	\$10,000
Pala Band of Mission Indians	\$10,000
Quartz Valley Indian Reservation	\$ 2,500
Redwood Valley Little River Band of Pomo Indians	\$ 2,500
Rincon Band of Luiseno Indians	\$10,000
San Pasqual Band of Mission Indians	\$10,000
Yurok Tribe	\$10,000
Susanville Indian Rancheria	\$ 5,000
Cher Ae Heights Indian community of the Trinidad Rancheria	\$ 1,000
Mechoopda Indian Tribe	\$10,000

APPENDIX J: County Data by CA-HTC Characteristic

	Total population	pop_ above_ co_ median	Total limited-English population	Leading hard-to-count causes	Top-3 non-English languages spoken at home by LEP population
Region 1					
Butte County	225,207	106,795	11,451	Vacant housing units, Unemployed, Non-family households	Spanish, Other Asian and Pacific Island languages, Chinese (incl. Mandarin, Cantonese)
Colusa County	21,479	7,902	4,070	Households without broadband subscription, Vacant housing units, Non-high school graduates	Spanish, Other Indo-European languages, Tagalog (incl. Filipino)
El Dorado County	185,015	83,959	6,666	Vacant housing units, Households without broadband subscription, Unemployed	Spanish, Other Indo-European languages, Chinese (incl. Mandarin, Cantonese)
Glenn County	27,935	16,721	4,417	Children under 5, Non-high school graduates, Households without broadband subscription	Spanish, Other Asian and Pacific Island languages, Tagalog (incl. Filipino)
Lassen County	31,470	16,677	1,921	Households without broadband subscription, Vacant housing units, Moved recently	Spanish, Other Asian and Pacific Island languages, Chinese (incl. Mandarin, Cantonese)
Modoc County	9,017	6,494	505	Households without broadband subscription, Vacant housing units, Non-family households	Spanish, Other Asian and Pacific Island languages, Vietnamese
Nevada County	98,838	48,370	2,161	Vacant housing units, Unemployed, Households without broadband subscription	Spanish, Chinese (incl. Mandarin, Cantonese), Other Indo-European languages
Placer County	374,985	152,300	15,947	Moved recently, Non-family households, Vacant housing units	Spanish, Other Indo-European languages, Tagalog (incl. Filipino)
Plumas County	18,724	6,845	249	Vacant housing units, Households without broadband subscription, Non-family households	Spanish, Other Indo-European languages, French, Haitian, or Cajun
Sacramento County	1,495,400	717,998	189,390	Households receiving public assistance, Unemployed, Below 150 percent of poverty level	Spanish, Chinese (incl. Mandarin, Cantonese), Other Indo-European languages
Shasta County	178,919	89,245	4,479	Non-family households, Households without broadband subscription, Vacant housing units	Spanish, Chinese (incl. Mandarin, Cantonese), Other Asian and Pacific Island languages
Sierra County	2,885		40		Spanish, French, Haitian, or Cajun, German or other West Germanic languages
Siskiyou County	43,530	13,111	1,240	Households without broadband subscription, Households receiving public assistance, Below 150 percent of poverty level	Spanish, Other Asian and Pacific Island languages, Other Indo-European languages

APPENDIX J: County Data by CA-HTC Characteristic

	Total population	pop_ above_ co_ median	Total limited-English population	Leading hard-to-count causes	Top-3 non-English languages spoken at home by LEP population
Sutter County	95,583	47,034	14,538	Moved recently, Below 150 percent of poverty level, Households receiving public assistance	Spanish, Other Indo-European languages, Other Asian and Pacific Island languages
Tehama County	63,247	29,668	4,667	Moved recently, Unemployed, Households without broadband subscription	Spanish, Other Indo-European languages, Korean
Yolo County	212,605	108,315	28,040	Moved recently, Non-family households, Below 150 percent of poverty level	Spanish, Chinese (incl. Mandarin, Cantonese), Other Indo-European languages
Yuba County	74,644	30,529	6,085	Unemployed, Households receiving public assistance, Households without broadband subscription	Spanish, Other Asian and Pacific Island languages, Other Indo-European languages
Region 2					
Del Norte County	27,442	13,623	1,144	Moved recently, Unemployed, Households without broadband subscription	Spanish, Other Asian and Pacific Island languages, Other Indo-European languages
Humboldt County	135,490	66,500	4,532	Non-family households, Vacant housing units, Below 150 percent of poverty level	Spanish, Other Asian and Pacific Island languages, Chinese (incl. Mandarin, Cantonese)
Lake County	64,095	26,103	3,763	Vacant housing units, Unemployed, Below 150 percent of poverty level	Spanish, Tagalog (incl. Filipino), Chinese (incl. Mandarin, Cantonese)
Mendocino County	87,497	42,789	7,547	Unemployed, Households without broadband subscription, Vacant housing units	Spanish, Other Indo-European languages, French, Haitian, or Cajun
Napa County	141,005	57,595	20,209	Vacant housing units, Moved recently, Non-family households	Spanish, Tagalog (incl. Filipino), Other Indo-European languages
Sonoma County	500,943	246,339	52,405	Non-family households, Moved recently, Vacant housing units	Spanish, Other Asian and Pacific Island languages, Other Indo-European languages
Trinity County	13,037	3,028	354	Households without broadband subscription, Vacant housing units, Moved recently	Spanish, Chinese (incl. Mandarin, Cantonese), Other Indo-European languages
Region 3					
Alameda County	1,629,615	758,676	281,942	Multi-unit structures, Non-family households, Renter-occupied units	Spanish, Chinese (incl. Mandarin, Cantonese), Other Indo-European languages
Contra Costa County	1,123,678	529,736	149,624	Moved recently, Multi-unit structures, Foreign-born population	Spanish, Chinese (incl. Mandarin, Cantonese), Other Indo-European languages

APPENDIX J: County Data by CA-HTC Characteristic

	Total population	pop_ above_ co_ median	Total limited-English population	Leading hard-to-count causes	Top-3 non-English languages spoken at home by LEP population
Marin County	260,814	119,259	22,123	Non-family households, Moved recently, Multi-unit structures	Spanish, Other Indo-European languages, Chinese (incl. Mandarin, Cantonese)
San Francisco County	864,263	386,566	170,041	Multi-unit structures, Non-family households, Renter-occupied units	Chinese (incl. Mandarin, Cantonese), Spanish, Tagalog (incl. Filipino)
San Mateo County	763,450	407,076	129,229	Foreign-born population, Multi-unit structures, Crowded units	Spanish, Chinese (incl. Mandarin, Cantonese), Tagalog (incl. Filipino)
Santa Clara County	1,911,226	972,400	371,011	Foreign-born population, Multi-unit structures, Moved recently	Spanish, Vietnamese, Chinese (incl. Mandarin, Cantonese)
Solano County	434,981	197,262	46,407	Moved recently, Unemployed, Households receiving public assistance	Spanish, Tagalog (incl. Filipino), Other Asian and Pacific Island languages
Region 4					
Alpine County	1,203		25		Other and unspecified languages, Spanish, Vietnamese
Amador County	37,306	16,154	1,122	Vacant housing units, Moved recently, Unemployed	Spanish, Other Asian and Pacific Island languages, Other Indo-European languages
Calaveras County	45,057	15,532	887	Vacant housing units, Moved recently, Non-family households	Spanish, Other Asian and Pacific Island languages, Tagalog (incl. Filipino)
Madera County	154,440	81,757	27,735	Below 150 percent of poverty level, Non-high school graduates, Households receiving public assistance	Spanish, Other Indo-European languages, Other and unspecified languages
Mariposa County	17,658	8,732	413	Vacant housing units, Households without broadband subscription, Non-family households	Spanish, Other Indo-European languages, Tagalog (incl. Filipino)
Merced County	267,390	101,503	56,696	Unemployed, Households receiving public assistance, Non-high school graduates	Spanish, Other Indo-European languages, Other Asian and Pacific Island languages
Mono County	14,058	2,469	1,076	Households without broadband subscription, Vacant housing units, Non-family households	Spanish, Chinese (incl. Mandarin, Cantonese), Vietnamese
San Joaquin County	724,153	295,286	117,037	Unemployed, Households receiving public assistance, Below 150 percent of poverty level	Spanish, Other Indo-European languages, Other Asian and Pacific Island languages
Stanislaus County	535,684	248,269	84,251	Unemployed, Households receiving public assistance, Non-high school graduates	Spanish, Other Indo-European languages, Other Asian and Pacific Island languages

APPENDIX J: County Data by CA-HTC Characteristic

	Total population	pop_ above_ co_ median	Total limited-English population	Leading hard-to-count causes	Top-3 non-English languages spoken at home by LEP population
Tuolumne County	53,899	24,585	1,036	Vacant housing units, Households without broadband subscription, Non-family households	Spanish, Other Indo-European languages, Korean
Region 5					
Monterey County	433,168	233,278	111,870	Non-high school graduates, Crowded units, Limited English-speaking households	Spanish, Tagalog (incl. Filipino), Other Asian and Pacific Island languages
San Benito County	58,671	28,293	9,692	Unemployed, Moved recently, Non-high school graduates	Spanish, Other Indo-European languages, Korean
San Luis Obispo County	280,119	124,911	18,127	Non-family households, Vacant housing units, Moved recently	Spanish, Tagalog (incl. Filipino), Other Indo-European languages
Santa Barbara County	442,996	227,277	72,763	Non-high school graduates, Crowded units, Renter-occupied units	Spanish, Chinese (incl. Mandarin, Cantonese), Tagalog (incl. Filipino)
Santa Cruz County	273,263	145,816	33,672	Crowded units, Non-family households, Moved recently	Spanish, Chinese (incl. Mandarin, Cantonese), Other Indo-European languages
Ventura County	847,834	426,485	121,322	Non-high school graduates, Crowded units, Multi-unit structures	Spanish, Tagalog (incl. Filipino), Chinese (incl. Mandarin, Cantonese)
Region 6					
Fresno County	971,616	476,414	169,001	Households receiving public assistance, Below 150 percent of poverty level, Non-high school graduates	Spanish, Other Asian and Pacific Island languages, Other Indo-European languages
Inyo County	18,195	10,865	832	Non-family households, Households without broadband subscription, Renter-occupied units	Spanish, Other Asian and Pacific Island languages, Chinese (incl. Mandarin, Cantonese)
Kern County	878,744	416,637	144,776	Below 150 percent of poverty level, Non-high school graduates, Households without broadband subscription	Spanish, Other Indo-European languages, Tagalog (incl. Filipino)
Kings County	150,183	72,221	25,680	Households without broadband subscription, Below 150 percent of poverty level, Households receiving public assistance	Spanish, Tagalog (incl. Filipino), Other Indo-European languages

APPENDIX J: County Data by CA-HTC Characteristic

	Total population	pop_ above_ co_ median	Total limited-English population	Leading hard-to-count causes	Top-3 non-English languages spoken at home by LEP population
Tulare County	458,809	220,411	111,761	Below 150 percent of poverty level, Households receiving public assistance, Households without broadband subscription	Spanish, Other Asian and Pacific Island languages, Other Indo-European languages
Region 7					
Riverside County	2,355,002	1,038,598	327,781	Unemployed, Vacant housing units, Non-high school graduates	Spanish, Chinese (incl. Mandarin, Cantonese), Tagalog (incl. Filipino)
San Bernardino County	2,121,220	995,648	296,646	Households receiving public assistance, Unemployed, Below 150 percent of poverty level	Spanish, Chinese (incl. Mandarin, Cantonese), Other Asian and Pacific Island languages
Region 8					
Los Angeles County	10,105,722	4,952,292	2,316,767	Crowded units, Multi-unit structures, Non-high school graduates	Spanish, Chinese (incl. Mandarin, Cantonese), Other Indo-European languages
Region 9					
Orange County	3,155,816	1,726,890	592,420	Crowded units, Foreign-born population, Multi-unit structures	Spanish, Vietnamese, Korean
Region 10					
Imperial County	179,957	84,181	54,957	Unemployed, Vacant housing units, Limited English-speaking households	Spanish, Chinese (incl. Mandarin, Cantonese), Other Indo-European languages
San Diego County	3,283,665	1,547,397	449,228	Multi-unit structures, Renter-occupied units, Non-family households	Spanish, Tagalog (incl. Filipino), Vietnamese

APPENDIX J: County Data by CA-HTC Characteristic

	Vacant	With 3 or more units in a multi-unit structure	Pct_ renter	Pct_ crowded	Pct_ nonfamily	Pct_ foreign_ born	Pct_ not_ HS_ graduates	Pct_ 150 poverty_ or_ below	Pct_ assistance	Pct_ civilian_ unemp
Region 1										
Butte County	12.2	18.5	41	0.8	40.2	7.6	11.2	31.6	4.3	9.1
Colusa County	11.8	8.8	35.8	2.2	24.7	25.7	30.6	27.6	3.2	5.9
El Dorado County	23.7	10.1	23.7	0.5	29.2	9.2	7.1	16.3	2.5	8.1
Glenn County	9.4	11.7	42.4	0.5	27.6	20	27.5	31.4	4.1	9.2
Lassen County	25.9	6.3	34	0.2	35.5	5.9	17.7	23.7	3.5	7.5
Modoc County	30.7	4.3	27	0.5	41.9	7.1	14.5	31.9	1.5	7.5
Nevada County	24.4	8.1	25.8	0.8	36	6	6.5	20.1	2.6	7.3
Placer County	13.2	15.2	29.2	0.6	29.8	10.8	5.5	13.5	2.1	5.6
Plumas County	47.4	3.6	27.4	0	41.2	3.4	6.4	22.5	3.3	9.4
Sacramento County	5.7	24.6	44.5	1.3	33.9	20.7	13	26.5	5.1	8.8
Shasta County	9.9	13.6	37.4	0.9	35.7	5.3	9.3	28.3	3.2	6.8
Sierra County	49.4	2.4	20.3	0	41.8	2.6	7.1	24.7	1.7	5.3
Siskiyou County	20.9	8.6	34.5	0.8	38.1	5.3	10.7	32.5	4.8	9.1

APPENDIX J: County Data by CA-HTC Characteristic

	Vacant	With 3 or more units in a multi-unit structure	Pct_ renter	Pct_ crowded	Pct_ nonfamily	Pct_ foreign_ born	Pct_ not_ HS_ graduates	Pct_ 150 poverty_ or_ below	Pct_ assistance	Pct_ civilian_ unemp
Sutter County	5.9	16.1	43	1.9	27	22.7	21.3	29.3	4.9	10.5
Tehama County	13.3	9.5	32.8	1.5	31.6	9.1	16	33.7	4.6	10.1
Yolo County	5.3	28.1	48.1	1.4	37.7	22.7	13.9	28.4	3.5	7.2
Yuba County	8.3	13.5	41.8	2.1	29	12.2	17.9	29.2	6.2	9.9
Region 2										
Del Norte County	14.8	8.9	38.1	1.5	40.8	6.3	18.4	33.1	6.1	9.5
Humboldt County	13.8	15.1	43.5	1.3	43.7	5.3	9.5	33.5	3.7	8.9
Lake County	26.4	5.7	34.1	1	39.1	8.7	15.3	34.5	4.4	11.2
Mendocino County	16.3	10.5	40.8	1.4	39.1	13.1	13.1	31.7	3.5	10.4
Napa County	11.6	15.4	36.9	1.5	31.2	21.9	15.3	16.2	1.7	5.4
Sonoma County	8.6	16.3	39.7	1.6	36.7	16.6	12.3	18	2.2	5.9
Trinity County	38	3.7	31.2	1.1	37.2	5.1	10.2	35.8	6.4	9.6
Region 3										
Alameda County	4.7	33.6	47	2.4	33.3	32.1	12.5	17.8	3.5	6
Contra Costa County	4.8	21.8	34.5	1.2	28.2	24.7	10.9	16.4	2.6	6.9

APPENDIX J: County Data by CA-HTC Characteristic

	Vacant	With 3 or more units in a multi-unit structure	Pct_ renter	Pct_ crowded	Pct_ nonfamily	Pct_ foreign_ born	Pct_ not_ HS_ graduates	Pct_ 150 poverty_ or_ below	Pct_ assistance	Pct_ civilian_ unemp
Marin County	6.9	23.3	35.8	1.5	38.2	18	6.8	13.1	1.1	4.5
San Francisco County	8.1	58.1	62.7	3.5	53	34.8	12.1	18.1	2.3	5.4
San Mateo County	4.8	31.4	40.3	3	30.5	34.7	11.1	12.6	1.6	4.7
Santa Clara County	4.2	31.9	43.1	2.6	28.1	38.6	12.4	14.4	2.1	5.7
Solano County	5.5	19.9	40	1.3	28	20.1	12.4	19.3	3.5	8.5
Region 4										
Alpine County	82.5	28.8	16.8	0.3	32.2	1.9	10.2	29.8	4.6	14.6
Amador County	22.3	6	23	0.3	33.2	6	10.3	18.7	2.1	9.3
Calaveras County	36.8	3.1	21.8	0.7	33.2	5.7	10	19.5	2.3	7.1
Madera County	11.2	9.8	37.7	2.7	22.3	21.5	28.4	34.8	6.1	8.3
Mariposa County	28.4	4.2	29.3	0.5	35.4	6.8	9.9	23.1	3.7	10
Merced County	6.2	12.7	48	2.2	23.7	25.5	31.1	38.8	7.5	14.6
Mono County	65.1	35.7	43.9	1	49.9	17.4	15.3	19.1	0.8	3.6
San Joaquin County	6.5	16.1	44.3	1.8	25.6	23.3	21.6	28.5	5	10.1
Stanislaus County	5.2	13.9	42.9	1.6	25.8	20.7	22.2	29.6	5.2	11.8

APPENDIX J: County Data by CA-HTC Characteristic

	Vacant	With 3 or more units in a multi-unit structure	Pct_ renter	Pct_ crowded	Pct_ nonfamily	Pct_ foreign_ born	Pct_ not_ HS_ graduates	Pct_ 150 poverty_ or_ below	Pct_ assistance	Pct_ civilian_ unemp
Tuolumne County	29.2	6.6	30.6	0.5	35.9	4.7	9.3	21.7	3.4	7.9
Region 5										
Monterey County	10.4	23.3	49.3	5	27.6	29.8	28.8	27.9	2.2	6
San Benito County	4.8	10.8	36.3	2.8	19.7	20.5	20.9	19.6	2.6	8.8
San Luis Obispo County	12.6	15.4	40	1.2	36.7	10.4	9.5	20.6	1.8	4.8
Santa Barbara County	7.3	26.8	47.7	3.9	34.9	23	19.6	25.2	2.3	6.6
Santa Cruz County	9.5	18.7	40.3	2.7	37	18	13.6	23.2	2.6	6.7
Ventura County	5.6	20	36.8	2.1	26.6	22.5	16	18.6	2	6.6
Region 6										
Fresno County	7.5	23	47	2.4	27.1	21	25.3	37.9	8.4	10.4
Inyo County	15.7	7.5	36.3	0.2	45.8	9.4	11.4	18.7	3.1	5.2
Kern County	9.7	15.3	42.8	2.2	25.3	19.9	26.2	36	6.1	10.9
Kings County	6.6	17.8	48.2	2.1	24	18.5	27.1	34.3	5.1	9.7

APPENDIX J: County Data by CA-HTC Characteristic

	Vacant	With 3 or more units in a multi-unit structure	Pct_ renter	Pct_ crowded	Pct_ nonfamily	Pct_ foreign_ born	Pct_ not_ HS_ graduates	Pct_ 150 poverty_ or_ below	Pct_ assistance	Pct_ civilian_ unemp
Tulare County	7.9	12.3	43.8	2.4	22.2	22.4	31.4	42.5	10.3	10
Region 7										
Riverside County	13.9	15.6	35	1.9	26.6	21.8	18.9	26	3.6	9.9
San Bernardino County	12.4	17.8	40.8	2.2	24	20.9	20.8	29.4	5.4	9.9
Region 8										
Los Angeles County	6	40	54.1	4.8	33.1	34.4	21.8	28.1	3.8	7.8
Region 9										
Orange County	5.2	32.6	42.6	3.1	27.9	30.3	15.3	20.1	2.1	5.8
Region 10										
Imperial County	21	19.8	43.6	2.8	22.4	31.7	31.6	36.9	6.3	16
San Diego County	7	33.7	47	2.1	32.8	23.6	13.3	21.9	2.5	7.1

APPENDIX J: County Data by CA-HTC Characteristic

	Pct_ language _isolated	Pct_moved_ from_ outside_ county	Pct_ children_ under 5	Pct_ack_of_ broadband	co_median_ htc	pop_above_ co_median	Leading hard-to-count causes
Region 1							
Butte County	2.3	6.7	5.5	19.1	31	106,795	Vacant housing units, Unemployed, Non-family households
Colusa County	9	3.2	7.2	25.5	45	7,902	Households without broadband subscription, Vacant housing units, Non-high school graduates
El Dorado County	1.7	7.1	4.6	16.5	24	83,959	Vacant housing units, Households without broadband subscription, Unemployed
Glenn County	10.9	4	7.3	36	46	16,721	Children under 5, Non-high school graduates, Households without broadband subscription
Lassen County	0.7	18.6	4.5	27.1	43	16,677	Households without broadband subscription, Vacant housing units, Moved recently
Modoc County	2.8	8.6	4.2	31.8	38	6,494	Households without broadband subscription, Vacant housing units, Non-family households
Nevada County	1.2	5.7	4.3	17.5	27.5	48,370	Vacant housing units, Unemployed, Households without broadband subscription
Placer County	2.1	6.7	5.4	13	21	152,300	Moved recently, Non-family households, Vacant housing units
Plumas County	0.8	6	4.4	29.6	39	6,845	Vacant housing units, Households without broadband subscription, Non-family households
Sacramento County	6.8	5.6	6.6	17.2	33	717,998	Households receiving public assistance, Unemployed, Below 150 percent of poverty level
Shasta County	1.2	5.8	5.9	24.7	29	89,245	Non-family households, Households without broadband subscription, Vacant housing units
Sierra County	0.2	3.9	3.7	31	30		
Siskiyou County	1.1	5.1	5.2	25.4	46	13,111	Households without broadband subscription, Households receiving public assistance, Below 150 percent of poverty level

APPENDIX J: County Data by CA-HTC Characteristic

	Pct_ language _isolated	Pct_moved_ from_ outside_ county	Pct_ children_ under 5	Pct_ack_of_ broadband	co_median_ htc	pop_above_ co_median	Leading hard-to-count causes
Sutter County	8.1	6.3	6.9	21.2	40	47,034	Moved recently, Below 150 percent of poverty level, Households receiving public assistance
Tehama County	3.4	7.3	6.1	29.7	48	29,668	Moved recently, Unemployed, Households without broadband subscription
Yolo County	6.9	11.9	5.8	16.5	34	108,315	Moved recently, Non-family households, Below 150 percent of poverty level
Yuba County	4.2	9.3	8.1	20	55	30,529	Unemployed, Households receiving public assistance, Households without broadband subscription
Region 2							
Del Norte County	1.7	9.5	6	26.7	56	13,623	Moved recently, Unemployed, Households without broadband subscription
Humboldt County	1.6	7.2	5.5	20.6	38	66,500	Non-family households, Vacant housing units, Below 150 percent of poverty level
Lake County	2.6	8.5	5.6	29.4	51	26,103	Vacant housing units, Unemployed, Below 150 percent of poverty level
Mendocino County	4.6	6	5.9	26.2	46	42,789	Unemployed, Households without broadband subscription, Vacant housing units
Napa County	6.4	5.5	5.3	14.1	29	57,595	Vacant housing units, Moved recently, Non-family households
Sonoma County	4.2	5.2	5.2	14.9	23.5	246,339	Non-family households, Moved recently, Vacant housing units
Trinity County	0.7	5.7	4.4	36	52	3,028	Households without broadband subscription, Vacant housing units, Moved recently
Region 3							
Alameda County	9.6	6.6	6	14.3	35	758,676	Multi-unit structures, Non-family households, Renter-occupied units
Contra Costa County	6.7	6	5.8	11.8	18	529,736	Moved recently, Multi-unit structures, Foreign-born population

APPENDIX J: County Data by CA-HTC Characteristic

	Pct_ language _isolated	Pct_moved_ from_ outside_ county	Pct_ children_ under 5	Pct_ack_of_ broadband	co_median_ htc	pop_above_ co_median	Leading hard-to-count causes
Marin County	4.3	7.9	4.8	11.1	19	119,259	Non-family households, Moved recently, Multi-unit structures
San Francisco County	11.8	7.8	4.5	15.5	45	386,566	Multi-unit structures, Non-family households, Renter-occupied units
San Mateo County	9	6.4	5.9	11.7	24.5	407,076	Foreign-born population, Multi-unit structures, Crowded units
Santa Clara County	10.8	6.1	6.3	10.6	29	972,400	Foreign-born population, Multi-unit structures, Moved recently
Solano County	4.6	7.1	6.1	13.9	27.5	197,262	Moved recently, Unemployed, Households receiving public assistance
Region 4							
Alpine County	1.6	7.3	1.9	12.5	43		
Amador County	0.5	8.6	3.9	20.9	33	16,154	Vacant housing units, Moved recently, Unemployed
Calaveras County	0.5	4.9	4.2	25.1	32.5	15,532	Vacant housing units, Moved recently, Non-family households
Madera County	10.5	5.4	7.6	27.8	50	81,757	Below 150 percent of poverty level, Non-high school graduates, Households receiving public assistance
Mariposa County	0.7	6.7	4.3	28.9	37.5	8,732	Vacant housing units, Households without broadband subscription, Non-family households
Merced County	13	5.7	8	24.8	64	101,503	Unemployed, Households receiving public assistance, Non-high school graduates
Mono County	3.4	5.7	3.5	28	42	2,469	Households without broadband subscription, Vacant housing units, Non-family households
San Joaquin County	8.5	5.4	7.3	22.5	42	295,286	Unemployed, Households receiving public assistance, Below 150 percent of poverty level
Stanislaus County	8.9	4.5	7.3	20.7	43	248,269	Unemployed, Households receiving public assistance, Non-high school graduates

APPENDIX J: County Data by CA-HTC Characteristic

	Pct_ language _isolated	Pct_moved_ from_ outside_ county	Pct_ children_ under 5	Pct_ack_of_ broadband	co_median_ htc	pop_above_ co_median	Leading hard-to-count causes
Tuolumne County	1.3	8.4	4.5	24.1	32	24,585	Vacant housing units, Households without broadband subscription, Non-family households
Region 5							
Monterey County	13.2	6	7.6	21.7	41	233,278	Non-high school graduates, Crowded units, Limited English-speaking households
San Benito County	8.1	5	6.6	12.9	32	28,293	Unemployed, Moved recently, Non-high school graduates
San Luis Obispo County	3.2	7.7	4.9	15	25	124,911	Non-family households, Vacant housing units, Moved recently
Santa Barbara County	7.7	7.3	6.4	17.7	29.5	227,277	Non-high school graduates, Crowded units, Renter-occupied units
Santa Cruz County	5.7	6.7	5.4	15	27	145,816	Crowded units, Non-family households, Moved recently
Ventura County	6.2	4.3	6.2	14.9	19.5	426,485	Non-high school graduates, Crowded units, Multi-unit structures
Region 6							
Fresno County	10	3.5	8.1	25.2	53	476,414	Households receiving public assistance, Below 150 percent of poverty level, Non-high school graduates
Inyo County	2.4	6.6	5.7	24.3	36	10,865	Non-family households, Households without broadband subscription, Renter-occupied units
Kern County	8.9	5	8.2	26.1	51	416,637	Below 150 percent of poverty level, Non-high school graduates, Households without broadband subscription
Kings County	11.3	9.4	7.9	26.2	44	72,221	Households without broadband subscription, Below 150 percent of poverty level, Households receiving public assistance

APPENDIX J: County Data by CA-HTC Characteristic

	Pct_ language _isolated	Pct_moved_ from_ outside_ county	Pct_ children_ under 5	Pct_ack_of_ broadband	co_median_ htc	pop_above_ co_median	Leading hard-to-count causes
Tulare County	16.2	3.2	8.6	30.4	64.5	220,411	Below 150 percent of poverty level, Households receiving public assistance, Households without broadband subscription
Region 7							
Riverside County	7.3	5.5	6.7	17.4	34	1,038,598	Unemployed, Vacant housing units, Non-high school graduates
San Bernardino County	6.9	5.8	7.3	20.7	41	995,648	Households receiving public assistance, Unemployed, Below 150 percent of poverty level
Region 8							
Los Angeles County	13.2	2.9	6.3	20.1	48	4,952,292	Crowded units, Multi-unit structures, Non-high school graduates
Region 9							
Orange County	9.1	4.4	6	12.3	26	1,726,890	Crowded units, Foreign-born population, Multi-unit structures
Region 10							
Imperial County	21.9	3.8	8.4	30.2	70	84,181	Unemployed, Vacant housing units, Limited English-speaking households
San Diego County	6.8	4.9	6.5	13.1	29	1,547,397	Multi-unit structures, Renter-occupied units, Non-family households