

EXHIBIT A

(The remainder of this page intentionally left blank)



California Complete Count – Census 2020 Contractor Deliverables and Payment Approvals

COUNTIES				
County	Contract Amount	Year to Date Payments	% Year to Date Paid	Deliverables Invoice Received and Approved*
Alameda	\$843,249	\$493,300.67	59%	<ul style="list-style-type: none"> • Board Resolution • Strategic Plan • 1st Quarterly Report • 2nd Quarterly Report
Calaveras	\$50,000	\$45,000.00	90%	<ul style="list-style-type: none"> • Board Resolution • Strategic Plan • 1st Quarterly Report • 2nd Quarterly Report • Implementation Plan • Withhold Release
Colusa	\$25,000	\$22,500.00	90%	<ul style="list-style-type: none"> • Board Resolution • Strategic Plan • 1st Quarterly Report • 2nd Quarterly Report • Implementation Plan • Withhold Release
Contra Costa	\$362,605	\$293,710.05	81%	<ul style="list-style-type: none"> • Board Resolution • Strategic Plan • 1st Quarterly Report • 2nd Quarterly Report • Implementation Plan
Del Norte	\$50,000	\$45,000.00	90%	<ul style="list-style-type: none"> • Board Resolution • Strategic Plan • 1st Quarterly Report • 2nd Quarterly Report • Implementation Plan • Withhold Release
Fresno	\$1,088,443	\$979,598.71	90%	<ul style="list-style-type: none"> • Board Resolution • Strategic Plan • 1st Quarterly Report • 2nd Quarterly Report • Implementation Plan • Withhold Release

*As of January 15, 2020

**Deliverable Received But Not Approved



California Complete Count – Census 2020 Contractor Deliverables and Payment Approvals

COUNTIES				
County	Contract Amount	Year to Date Payments	% Year to Date Paid	Deliverables Invoice Received and Approved*
Humboldt	\$100,000	\$90,000.00	90%	<ul style="list-style-type: none"> • Board Resolution • Strategic Plan • 1st Quarterly Report • 2nd Quarterly Report • Implementation Plan • Withhold Release
Imperial	\$284,435	\$263,102.38	93%	<ul style="list-style-type: none"> • Board Resolution • Strategic Plan • 1st Quarterly Report • 2nd Quarterly Report • Implementation Plan • Withhold Release
Inyo	\$25,000	\$22,500.00	90%	<ul style="list-style-type: none"> • Board Resolution • Strategic Plan • 1st Quarterly Report • 2nd Quarterly Report • Implementation Plan • Withhold Release
Kern	\$852,723	\$767,450.70	90%	<ul style="list-style-type: none"> • Board Resolution • Strategic Plan • 1st Quarterly Report • 2nd Quarterly Report • Implementation Plan • Withhold Release
Kings	\$121,055	\$98,054.55	81%	<ul style="list-style-type: none"> • Board Resolution • Strategic Plan • 1st Quarterly Report • 2nd Quarterly Report • Implementation Plan
Lake	\$75,000	\$60,750.00	81%	<ul style="list-style-type: none"> • Board Resolution • Strategic Plan • 1st Quarterly Report • 2nd Quarterly Report • Implementation Plan

*As of January 15, 2020

**Deliverable Received But Not Approved



California Complete Count – Census 2020 Contractor Deliverables and Payment Approvals

COUNTIES				
County	Contract Amount	Year to Date Payments	% Year to Date Paid	Deliverables Invoice Received and Approved*
Los Angeles	\$9,393,090	\$7,608,402.90	81%	<ul style="list-style-type: none"> • Board Resolution • Strategic Plan • 1st Quarterly Report • 2nd Quarterly Report • Implementation Plan
Madera	\$133,610	\$108,224.10	81%	<ul style="list-style-type: none"> • Board Resolution • Strategic Plan • 1st Quarterly Report • 2nd Quarterly Report • Implementation Plan
Marin	\$100,000	\$81,000.00	81%	<ul style="list-style-type: none"> • Board Resolution • Strategic Plan • 1st Quarterly Report • 2nd Quarterly Report • Implementation Plan
Mariposa	\$25,000	\$14,328.00	57%	<ul style="list-style-type: none"> • Board Resolution • Strategic Plan • 1st Quarterly Report • 2nd Quarterly Report
Mendocino	\$75,000	\$60,750.00	81%	<ul style="list-style-type: none"> • Board Resolution • Strategic Plan • 1st Quarterly Report • 2nd Quarterly Report • Implementation Plan • Withhold Release
Merced	\$289,390	\$234,405.80	81%	<ul style="list-style-type: none"> • Board Resolution • Strategic Plan • 1st Quarterly Report • 2nd Quarterly Report • Implementation Plan
Modoc	\$25,000	\$22,500.00	90%	<ul style="list-style-type: none"> • Board Resolution • Strategic Plan • 1st Quarterly Report • 2nd Quarterly Report • Implementation Plan • Withhold Release

*As of January 15, 2020

**Deliverable Received But Not Approved



California Complete Count – Census 2020 Contractor Deliverables and Payment Approvals

COUNTIES				
County	Contract Amount	Year to Date Payments	% Year to Date Paid	Deliverables Invoice Received and Approved*
Monterey	\$401,996	\$361,796.43	90%	<ul style="list-style-type: none"> • Board Resolution • Strategic Plan • 1st Quarterly Report • 2nd Quarterly Report • Implementation Plan • Withhold Release
Napa	\$100,000	\$58,500.00	59%	<ul style="list-style-type: none"> • Board Resolution • Strategic Plan • 1st Quarterly Report • 2nd Quarterly Report
Nevada	\$75,000	\$67,500.00	90%	<ul style="list-style-type: none"> • Board Resolution • Strategic Plan • 1st Quarterly Report • 2nd Quarterly Report • Implementation Plan • Withhold Release
Orange	\$1,555,519	\$1,399,947.11	90%	<ul style="list-style-type: none"> • Board Resolution • Strategic Plan • 1st Quarterly Report • 2nd Quarterly Report • Implementation Plan • Withhold Release
Placer	\$100,000	\$62,000.00	62%	<ul style="list-style-type: none"> • Board Resolution • Strategic Plan • 1st Quarterly Report • 2nd Quarterly Report
Riverside	\$1,210,891	\$1,089,801.89	90%	<ul style="list-style-type: none"> • Board Resolution • Strategic Plan • 1st Quarterly Report • 2nd Quarterly Report • Implementation Plan • Withhold Release

*As of January 15, 2020

**Deliverable Received But Not Approved



California Complete Count – Census 2020 Contractor Deliverables and Payment Approvals

COUNTIES				
County	Contract Amount	Year to Date Payments	% Year to Date Paid	Deliverables Invoice Received and Approved*
Sacramento	\$862,308	\$ 776,076.48	90%	<ul style="list-style-type: none"> • Board Resolution • Strategic Plan • 1st Quarterly Report • 2nd Quarterly Report • Implementation Plan • Withhold Release
San Benito	\$75,000	\$67,500.00	90%	<ul style="list-style-type: none"> • Board Resolution • Strategic Plan • 1st Quarterly Report • 2nd Quarterly Report • Implementation Plan • Withhold Release
San Bernardino	\$1,482,128	\$1,333,915.20	90%	<ul style="list-style-type: none"> • Board Resolution • Strategic Plan • 1st Quarterly Report • 2nd Quarterly Report • Implementation Plan • Withhold Release
San Diego (SANDAG)	\$1,565,350	\$915,729.75	59%	<ul style="list-style-type: none"> • Board Resolution • Strategic Plan • 1st Quarterly Report • 2nd Quarterly Report
San Francisco	\$546,212	\$319,534.24	59%	<ul style="list-style-type: none"> • Board Resolution • Strategic Plan • 1st Quarterly Report • 2nd Quarterly Report
San Luis Obispo	\$100,000	\$90,000.00	90%	<ul style="list-style-type: none"> • Board Resolution • Strategic Plan • 1st Quarterly Report • 2nd Quarterly Report • Implementation Plan • Withhold Release
San Mateo	\$228,835	\$185,357.15	81%	<ul style="list-style-type: none"> • Board Resolution • Strategic Plan • 1st Quarterly Report • 2nd Quarterly Report • Implementation Plan

*As of January 15, 2020

**Deliverable Received But Not Approved



California Complete Count – Census 2020 Contractor Deliverables and Payment Approvals

COUNTIES				
County	Contract Amount	Year to Date Payments	% Year to Date Paid	Deliverables Invoice Received and Approved*
Santa Barbara	\$354,319	\$318,887.10	90%	<ul style="list-style-type: none"> • Board Resolution • Strategic Plan • 1st Quarterly Report • 2nd Quarterly Report • Implementation Plan • Withhold Release
Santa Clara	\$963,854	\$563,854.39	58%	<ul style="list-style-type: none"> • Board Resolution • Strategic Plan • 1st Quarterly Report • 2nd Quarterly Report
Santa Cruz	\$111,586	\$100,427.40	90%	<ul style="list-style-type: none"> • Board Resolution • Strategic Plan • 1st Quarterly Report • 2nd Quarterly Report • Implementation Plan • Withhold Release
Shasta	\$100,000	\$58,500.00	59%	<ul style="list-style-type: none"> • Board Resolution • Strategic Plan • 1st Quarterly Report • 2nd Quarterly Report
Solano	\$145,572	\$85,159.62	59%	<ul style="list-style-type: none"> • Board Resolution • Strategic Plan • 1st Quarterly Report • 2nd Quarterly Report
Sonoma	\$100,000	\$81,000	81%	<ul style="list-style-type: none"> • Board Resolution • Strategic Plan • 1st Quarterly Report • 2nd Quarterly Report • Implementation Plan
Stanislaus	\$318,521	\$297,817.14	94%	<ul style="list-style-type: none"> • Board Resolution • Strategic Plan • 1st Quarterly Report • 2nd Quarterly Report • Implementation Plan • Withhold Release

*As of January 15, 2020

**Deliverable Received But Not Approved



California Complete Count – Census 2020 Contractor Deliverables and Payment Approvals

COUNTIES				
County	Contract Amount	Year to Date Payments	% Year to Date Paid	Deliverables Invoice Received and Approved*
Stockton	\$323,857	\$189,456.35	58%	<ul style="list-style-type: none"> • Board Resolution • Strategic Plan • 1st Quarterly Report • 2nd Quarterly Report
Sutter	\$86,138	\$69,771.78	81%	<ul style="list-style-type: none"> • Board Resolution • Strategic Plan • 1st Quarterly Report • 2nd Quarterly Report • Implementation Plan
Trinity (California Center for Rural Policy)	\$25,000	\$0.00	0%	<i>Deliverables received, invoices in process</i>
Tehama	\$75,000	\$67,500.00	90%	<ul style="list-style-type: none"> • Board Resolution • Strategic Plan • 1st Quarterly Report • 2nd Quarterly Report • Implementation Plan • Withhold Release
Tulare	\$582,714	\$471,998.34	81%	<ul style="list-style-type: none"> • Board Resolution • Strategic Plan • 1st Quarterly Report • 2nd Quarterly Report • Implementation Plan
Tuolumne	\$75,000	\$67,500.00	90%	<ul style="list-style-type: none"> • Board Resolution • Strategic Plan • 1st Quarterly Report • 2nd Quarterly Report • Implementation Plan • Withhold Release
Ventura	\$288,754	\$233,890.74	81%	<ul style="list-style-type: none"> • Board Resolution • Strategic Plan • 1st Quarterly Report • 2ND Quarterly Report • Implementation Plan

*As of January 15, 2020

**Deliverable Received But Not Approved



California Complete Count – Census 2020 Contractor Deliverables and Payment Approvals

COUNTIES				
County	Contract Amount	Year to Date Payments	% Year to Date Paid	Deliverables Invoice Received and Approved*
Yolo	\$127,079	\$114,371.10	90%	<ul style="list-style-type: none"> • Board Resolution • Strategic Plan • 1st Quarterly Report • 2nd Quarterly Report • Implementation Plan • Withhold Release
Yuba	\$100,000	\$90,000.00	90%	<ul style="list-style-type: none"> • Board Resolution • Strategic Plan • 1st Quarterly Report • 2ND Quarterly Report • Implementation Plan • Withhold Release

*As of January 15, 2020

**Deliverable Received But Not Approved



California Complete Count – Census 2020 Contractor Deliverables and Payment Approvals

REGIONAL ADMINISTRATIVE COMMUNITY-BASED ORGANIZATIONS (ACBOS)				
Regional ACBO	Contract Amount	Year to Date Payments	% Year to Date Paid	Deliverables Invoice Received and Approved*
Sacramento Region Community Foundation	\$1,730,633	\$1,557,569.70	90%	<ul style="list-style-type: none"> • Strategic Plan • 1st Quarterly Report • 2nd Quarterly Report • Implementation Plan • Withhold Release
United Way of the Wine County	\$266,220	\$239,598.00	90%	<ul style="list-style-type: none"> • Strategic Plan • 1st Quarterly Report • 2nd Quarterly Report • Implementation Plan • Withhold Release
United Way of the Bay Area	\$2,813,670	\$2,532,303.00	90%	<ul style="list-style-type: none"> • Strategic Plan • 1st Quarterly Report • 2nd Quarterly Report • Implementation Plan • Withhold Release
Faith in Action Network	\$1,370,271	\$ 1,233,243.90	90%	<ul style="list-style-type: none"> • Strategic Plan • 1st Quarterly Report • 2nd Quarterly Report • Implementation Plan • Withhold Release
Ventura County Community Foundation	\$1,115,370	\$ 1,003,833.00	90%	<ul style="list-style-type: none"> • Strategic Plan • 1st Quarterly Report • 2nd Quarterly Report • Implementation Plan • Withhold Release
Sierra Health Foundation: Center of Health Program Management	\$2,382,210	\$ 2,143,989.00	90%	<ul style="list-style-type: none"> • Strategic Plan • 1st Quarterly Report • 2nd Quarterly Report • Implementation Plan • Withhold Release
The Community Foundation	\$2,425,815	\$2,183,233.50	90%	<ul style="list-style-type: none"> • Strategic Plan • 1st Quarterly Report • 2nd Quarterly Report • Implementation Plan • Withhold Release

*As of January 15, 2020

**Deliverable Received But Not Approved



California Complete Count – Census 2020 Contractor Deliverables and Payment Approvals

REGIONAL ADMINISTRATIVE COMMUNITY-BASED ORGANIZATIONS (ACBOS)				
Regional ACBO	Contract Amount	Year to Date Payments	% Year to Date Paid	Deliverables Invoice Received and Approved*
California Community Foundation	\$8,461,665	\$ 7,615,498.50	90%	<ul style="list-style-type: none"> • Strategic Plan • 1st Quarterly Report • 2nd Quarterly Report • Implementation Plan • Withhold Release
Charitable Ventures of Orange County	\$1,402,245	\$ 1,262,020.30	90%	<ul style="list-style-type: none"> • Strategic Plan • 1st Quarterly Report • 2nd Quarterly Report • Implementation Plan • Withhold Release
United Way of San Diego County	\$1,666,170	\$ 1,349,597.70	81%	<ul style="list-style-type: none"> • Strategic Plan • 1st Quarterly Report • 2ND Quarterly Report** • Implementation Plan

*As of January 15, 2020

**Deliverable Received But Not Approved



California Complete Count – Census 2020 Contractor Deliverables and Payment Approvals

STATEWIDE COMMUNITY-BASED ORGANIZATIONS				
Statewide CBO	Contract Amount	Year to Date Payments	% Year to Date Paid	Deliverables Invoice Received and Approved
NALEO Educational Fund	\$400,000	\$304,000.00	76%	<ul style="list-style-type: none"> • Strategic Plan • 1st Quarterly Report • 2nd Quarterly Report • Implementation Plan • Withhold Release
Latino Community Foundation	\$400,000	\$288,000.00	72%	<ul style="list-style-type: none"> • Strategic Plan • 1st Quarterly Report • 2nd Quarterly Report • Implementation Plan • Withhold Release
California Calls	\$400,000	\$324,000.00	81%	<ul style="list-style-type: none"> • Strategic Plan • 1st Quarterly Report • 2ND Quarterly Report • Implementation Plan
California Indian Manpower Consortium	\$1,127,855	\$360,000.00	32%	<ul style="list-style-type: none"> • Strategic Plan • 1st Quarterly Report • 2nd Quarterly Report • Implementation Plan • Withhold Release
Community Partners	\$400,000	\$360,000.00	90%	<ul style="list-style-type: none"> • Strategic Plan • 1st Quarterly Report • 2nd Quarterly Report • Implementation Plan • Withhold Release
Asian Americans Advancing Justice	\$400,000	\$360,000.00	90%	<ul style="list-style-type: none"> • Strategic Plan • 1st Quarterly Report • 2ND Quarterly Report • Implementation Plan • Withhold Release
Coalition for Humane Immigrant Rights	\$100,000	\$65,000.00	65%	<ul style="list-style-type: none"> • Strategic Plan • 1st Quarterly Report • 2nd Quarterly Report
Coalition for Humane Immigrant Rights	\$100,000	\$65,000.00	65%	<ul style="list-style-type: none"> • Strategic Plan • 1st Quarterly Report • 2nd Quarterly Report

*As of January 15, 2020

**Deliverable Received But Not Approved



California Complete Count – Census 2020 Contractor Deliverables and Payment Approvals

STATEWIDE COMMUNITY-BASED ORGANIZATIONS				
Statewide CBO	Contract Amount	Year to Date Payments	% Year to Date Paid	Deliverables Invoice Received and Approved
California Rural Legal Assistance, Inc.	\$250,000	\$225,000.00	90%	<ul style="list-style-type: none"> • Strategic Plan • 1st Quarterly Report • 2nd Quarterly Report • Implementation Plan • Withhold Release
Mixteco/Indigena Community Organization Project	\$250,000	\$225,000.00	90%	<ul style="list-style-type: none"> • Strategic Plan • 1st Quarterly Report • 2nd Quarterly Report • Implementation Plan • Withhold Release
Equality California Institute	\$400,000	\$360,000.00	90%	<ul style="list-style-type: none"> • Strategic Plan • 1st Quarterly Report • 2nd Quarterly Report • Implementation Plan • Withhold Release
United Ways of California	\$400,000	\$252,000.00	63%	<ul style="list-style-type: none"> • Strategic Plan • 1st Quarterly Report • 2nd Quarterly Report
Disability Rights Education and Defense Fund	\$600,000	\$570,000.00	95%	<ul style="list-style-type: none"> • Strategic Plan • Implementation Plan
California Children and Families Foundation, Inc.	\$600,000	\$450,000.00	75%	<ul style="list-style-type: none"> • Strategic Plan
MENA with Council on American-Islamic Relations	\$400,000	\$300,000.00	75%	<ul style="list-style-type: none"> • Strategic Plan

*As of January 15, 2020

**Deliverable Received But Not Approved



California Complete Count – Census 2020 Contractor Deliverables and Payment Approvals

SECTORS				
Sector	Contract Amount	Year to Date Payments	% Year to Date Paid	Deliverables Invoice Received and Approved
Faith in Action Network/PICO	\$250,000.00	\$225,000.00	90%	<ul style="list-style-type: none"> • Strategic Plan • 1st Quarterly Report • 2nd Quarterly Report • Implementation Plan • Withhold Release
California Primary Care Association	\$250,000.00	\$225,000.00	90%	<ul style="list-style-type: none"> • Strategic Plan • 1st Quarterly Report • 2nd Quarterly Report • Implementation Plan • Withhold Release
California Labor Federation	\$250,000.00	\$180,000.00	72%	<ul style="list-style-type: none"> • Strategic Plan • 1st Quarterly Report • Implementation Plan • Withhold Release
Council for Strong America	\$300,000.00	\$285,000.00	95%	<ul style="list-style-type: none"> • Strategic Plan • Implementation Plan

*As of January 15, 2020

**Deliverable Received But Not Approved

EXHIBIT B

(The remainder of this page intentionally left blank)



Tribal Funding Agreement Opt-In with CA Complete Count – Census 2020 Office

- Benton Paiute Reservation and Off-Reservation Trust Land
- Big Pine Reservation
- Big Sandy Rancheria
- Blue Lake Rancheria
- Cahto Tribe of Laytonville Rancheria
- Campo Band of Mission Indians
- Cher-Ae Heights Indian Community of the Trinidad Rancheria
- Chicken Ranch Rancheria and Off-Reservation Trust Land
- Colusa Rancheria
- Elk Valley Rancheria, California
- Federated Indians of Graton Rancheria
- Fort Yuma Indian Reservation, CA--AZ (part)
- Hoopa Valley Tribe
- Karuk Community Development Corporation
- Manzanita Reservation and Off-Reservation Trust Land
- Mechoopda Indian Tribe of Chico Rancheria, California
- Mooretown Rancheria and Off-Reservation Trust Land
- Morongo Band of Mission Indians
- Pala Band of Mission Indians
- Quartz Valley Indian Reservation
- Redwood Valley Little River Band of Pomo Indians
- Resighini Rancheria
- Rincon Band of Luiseño Indians
- San Pasqual Band of Mission Indians
- Santa Rosa Reservation
- Sherwood Valley Rancheria of Pomo Indians
- Shingle Springs Rancheria
- Stewarts Point Rancheria
- Susanville Indian Rancheria
- Tolowa Dee-ni' Nation
- Viejas Reservation
- Woodfords Community (aka Woodfords tribe and Washoe Ranches Trust Land, NV-CA)
- Yurok Tribe

EXHIBIT C

(The remainder of this page intentionally left blank)



**CA Complete Count – Census 2020
County Offices of Education
Outreach Contract Eligible Allocations***

County Office of Education	FY 18 19	Opted in?	FY 19 20*	Opted in?	Total Funding*
Alameda	\$56,863.59	YES	\$85,051.23	YES	\$141,914.82
Butte	\$10,742.00	YES	\$14,560.52	YES	\$25,302.52
Colusa	N/A	N/A	\$5,651.52	NO	\$5,651.52
Contra Costa	\$41,088.33	YES	\$60,797.19	YES	\$101,885.52
El Dorado	\$8,930.01	YES	\$11,622.42	YES	\$20,552.43
Fresno	\$63,771.33	YES	\$94,093.11	YES	\$157,864.44
Humboldt	\$12,589.58	YES	\$15,096.09	YES	\$27,685.67
Imperial	\$17,312.96	YES	\$24,447.01	YES	\$41,759.97
Kern	\$62,647.34	YES	\$90,170.76	YES	\$152,818.10
Kings	\$11,630.16	NO	\$16,070.27	NO	\$27,700.43
Lake	N/A	N/A	\$5,484.91	YES	\$5,484.91
Los Angeles	\$421,576.82	YES	\$1,940,000.00	YES	\$2,361,576.82
Madera	\$12,039.67	NO	\$17,249.56	NO	\$29,289.23
Marin	\$12,510.02	YES	\$16,611.45	YES	\$29,121.47
Mendocino	\$7,217.82	YES	\$9,384.75	YES	\$16,602.57
Merced	\$23,792.23	YES	\$33,918.68	YES	\$57,710.91
Monterey	\$30,375.17	YES	\$43,550.61	YES	\$73,925.78
Napa	\$5,322.64	YES	\$7,410.29	YES	\$12,732.93
Nevada	N/A	N/A	\$5,560.83	NO	\$5,560.83
Orange	\$119,683.63	YES	\$181,086.83	YES	\$300,770.46
Placer	\$16,252.24	YES	\$22,807.01	YES	\$39,059.25
Riverside	\$112,228.02	YES	\$169,969.10	YES	\$282,197.12
Sacramento	\$57,916.76	YES	\$87,498.76	YES	\$145,415.52
San Benito	\$6,488.43	YES	\$8,393.57	YES	\$14,882.00
San Bernardino	\$110,879.27	YES	\$166,791.50	YES	\$277,670.77
San Diego	\$134,783.83	NO	\$201,839.57	YES	\$336,623.40
San Francisco	\$14,903.21	YES	\$22,496.15	YES	\$37,399.36
San Joaquin	\$37,620.45	YES	\$56,118.06	YES	\$93,738.51

*Pending final executed contract

County Office of Education	FY 18 19	Opted in?	FY 19 20*	Opted in?	Total Funding*
San Luis Obispo	\$9,986.78	YES	\$13,938.98	YES	\$23,925.76
San Mateo	\$27,742.21	YES	\$39,616.25	YES	\$67,358.46
Santa Barbara	\$26,268.31	NO	\$37,610.48	YES	\$63,878.79
Santa Clara	\$63,645.44	YES	\$94,034.99	YES	\$157,680.43
Santa Cruz	\$12,779.77	YES	\$18,120.78	YES	\$30,900.55
Shasta	\$12,469.02	YES	\$15,728.87	YES	\$28,197.89
Siskiyou	N/A	N/A	\$8,796.81	YES	\$8,796.81
Solano	\$13,600.22	YES	\$20,071.97	YES	\$33,672.19
Sonoma	\$26,772.75	YES	\$35,796.00	YES	\$62,569.05
Stanislaus	\$36,529.34	YES	\$52,929.00	YES	\$89,458.56
Sutter	\$9,475.00	NO	\$12,875.00	YES	\$22,350.43
Tehama	\$6,772.76	YES	\$8,569.00	YES	\$15,341.53
Tulare	\$43,219.30	YES	\$60,815.00	YES	\$104,034.48
Tuolumne	N/A	N/A	\$5,273.00	YES	\$5,273.28
Ventura	\$37,009.47	NO	\$54,491.00	NO	\$91,500.22
Yolo	\$8,811.52	YES	\$12,805.00	YES	\$21,616.08
Yuba	\$5,658.20	NO	\$7,929.00	YES	\$13,587.31

Notes:

- 1) Total funding amounts were made available to COEs who opted in on the second round.
- 2) County Offices of Education Contract Administration Agreements are as follows:
 - Monterey COE: Monterey and San Benito
 - Sacramento COE: Sacramento, Placer and Yolo
 - Tehama COE: Tehama and Butte
 - Yuba COE: Yuba and Sutter

EXHIBIT D

(The remainder of this page intentionally left blank)

Higher Education Strategy

California Complete Count – Census 2020

Prepared by: California Complete Count - Census 2020

December 10, 2019



PURPOSE

The purpose of the higher education strategy is to collaborate with students to develop effective outreach opportunities for college students to learn about the 2020 Census and to encourage them to respond to the Census questionnaire.

The state's colleges and universities enroll more than three million students. Colleges and universities with on-campus housing can choose how students are counted either through a group quarters process or by receiving a postcard in the mail. The 2020 Census requires college students to be counted where they are at as of April 1, 2020. Campuses can communicate to students that if they live in off-campus housing, they are responsible for completing their Census questionnaires. For those who live with their families, they can be trusted messengers for completing the Census questionnaire.

OUTCOME

The desired outcome is to ensure a full and accurate count of college students living in California in the 2020 Census.

PROCESS

The California Complete Count - Census 2020 Office (Census Office) will work with higher education systems and institutions and student organizations to leverage the State's resources and coordinate efforts in the field with students as key stakeholders. The Census Office will build on good practices and established partnerships with higher education institutions to ensure effective and efficient deployment of the State's resources for a complete count.

TARGET AUDIENCE

The main target audience for the Census Office's efforts are the students that fall into the hard-to-count demographic areas.

The Census Office will work with the higher education system and campuses of:

- University of California (UC)
- California State University (CSU)
- California Community Colleges (through the Community College Chancellor's Office and Community College League of California)
- Association of California Colleges and Universities

Other entities include:

- California Student Aid Commission
- California Department of Education, Adult Education Division

KEY RESPONSIBILITIES AND TASKS

HIGHER EDUCATION INSTITUTIONS

The higher education institutions are requested to be responsible for overseeing outreach and education activities at their institutions/campuses, and will actively engage students in identifying effective outreach strategies and tactics to reach their peers about the 2020 Census (sample tactics outlined below):

- Identify at least one office at each campus responsible for the Census 2020
- Each campus is asked to develop a plan to support outreach to students from hard-to-count demographics
- Organize events with student groups and student media to provide information
- Provide opportunities for students to link to the Census questionnaire online via campus emails, website registration sites, or social media
- Provide information on the Census; inform students of locations and hours of Questionnaire Assistance Centers in the area
- Join the Local Complete Count Committees to coordinate efforts and access resources

CENSUS OFFICE

The Census Office will be responsible for supporting the higher education institutions by leveraging the States resources, specifically:

- Survey campuses for existing programs that could be shared as good practices throughout the system (completed 9/2019)
- Connect Regional Program Managers to serve as resources for local efforts
- Disseminate toolkits with materials (i.e., flyers, posters, social media posts) to college campuses
- Develop a reporting format that will accurately tell the story of the Census efforts, both quantitative and qualitative outcomes
- Participate in appropriate events around the state to publicize the Census outreach
- Provide campuses access to the Partner Portal

ACTIVITIES AND TIMELINE

This section provides suggested activities and timeline for the Census Office and campuses. The activities include examples of what can be implemented by college campuses.

1) PLANNING (JANUARY – JUNE 2019)

Goal: Research and gather information to help understand California's higher education institutional, student, and campus community landscape.

Census Office Actions Taken:

- Analyzed student populations to develop strategy
- Conducted Interviews with Cal State Los Angeles faculty, staff, and students regarding Census outreach
- Conducted meetings with U.S. Census Bureau staff
- Information distributed to 200 Public Information Officers regarding key message points for Community College students
- Reviewed campuses federal reports that focus on enrollment statistics and campus climate
- Identified campuses that are federally designated as Predominately Hispanic Serving colleges/universities
- Conducted interviews with staff from each major higher education system, their advocacy organizations (Association of Independent California Colleges and Universities; The League of California Community Colleges; the California Department of Education Career and College Transition Division)

2) PARTNERSHIP DEVELOPMENT (JULY – DECEMBER 2019)

Goal: Develop partnerships with key organizations, groups, and programs in higher education to develop student outreach partnerships that will allow for a full and complete count of California college students. Identify specific strategies with each entity, acknowledging both the need to be flexible given the diversity of each campus and the critical role of local buy-in.

Governor's Office:

- Governor Gavin Newsom sent letters to University of California Board of Regents, California State University Board of Trustees, and the Association of Independent California Colleges and Universities to engage them in census outreach efforts

Campuses (ongoing work includes):

- Engage student government to develop public awareness campaigns
- Collaborate with local students' organizations and student support programs that touch hard to count HTC populations
- Work with faculty to incorporate census into curriculum
- Develop plans to leverage registration for spring quarter or semester as an opportunity to count students

Census Office:

- Surveyed campuses to assess outreach plans to date (September 2019)
- Established a point of contact for each higher education partner
- Connected Regional Program managers with their respective local campuses (October 2019)
- Developed partnership with Community Colleges through Census 2020 resolution (May 2019, ongoing)
- Presented at the League of Community Colleges Board of Governors (June 2019)
- Coordinated proposal from Chancellor's Office of California Community Colleges, the Community College Foundation and the League of California Community Colleges for census outreach (October 2019)
- Met with California State University presidents to introduce Census outreach efforts (October 17, 2019)
- Connected with the California Student Aid Commission and I Can Afford College to determine ways students can learn more about the census when they are applying for financial aid opportunities (in progress)
- Produced and distributed higher education toolkit based off of Los Angeles Complete Count Higher Education Committee (11/20/2019)
- Met with California Department of Education Adult Education Division discussed a census-based curriculum for adult education schools and outreach to these schools which included hosting job fairs for U.S. Census Bureau (July 2019)
- Collaborate with communications / media contractor for large scale communications (in progress)
- Presented to CSU Governmental Relations staff at Advocacy Training Conference (November 2019)
- Began conversations on collaborations with University of California Office of the President (October 2019)
- Continued conversations with AICCU to work collaboratively with Independent colleges and universities.

3) IMPLEMENTATION (JANUARY – JUNE 2020)

Goal: Ensure information and assistance are readily available to college students on their campuses and in their communities. This phase is action-oriented and puts into play each of the activities and efforts formulated in Phase II, with the purpose of implementing campus and organizational specific plans.

Census Office:

- Partner with California Student Aid Commission and I Can Afford College to have information on their website and include information in mailers about student participation in the census linking to the California Complete Count website
- Monitor activities
- Site visits to campuses to observe and provide resources
- Provide access through Census Office Partner Portal to relevant higher education and other materials to campuses

Campuses (sample of activities):

- Distribute census collateral available to campuses
- Leverage campus events to incorporate messaging into programming
- Hold special campus events
- Have libraries and computer labs have a welcome screen to promote participation in the 2020 Census with a link to the online form
- Send an e-blast to all students regarding participation in the 2020 Census
- Work with student radio station to put together segments on census and implications of student participation – “why it should matter to students”
- Publish in student newspaper stories about the value of participating in the census
- Publish stories raising census awareness in alumni communications
- Conduct text message campaign

4)REPORTING (JULY – SEPTEMBER 2020)

Goal: The reporting phase is intended to help the Census 2020 Office and colleges understand what was successful and could be utilized in future census efforts or other civic engagement opportunities.

Census Office:

- Request final reports to be analyzed for Census 2030 efforts

PARTNERS

The following section provides a summary of activities conducted by partners working on Census outreach efforts.

FOUNDATION FOR CALIFORNIA COMMUNITY COLLEGES ROLL OUT AND STRATEGY

Target Population: 2.1 million students

Contract amount: \$956,795

Status: Contract executed (November 2019)

The California Complete Count Census Office in partnership with the Foundation for California Community Colleges and the Chancellor's office proposes to reach over 2.1 million students, and the majority of these students are representative of hard-to-count populations. California's community colleges are located in the urban, rural, and suburban areas throughout the state. This college system is one of the most effective ways to reach young adults ages 19-25 who are not in the traditional four-year colleges. Many of these students are first-time college attendees who will educate and inform their families and communities. An investment in a coordinated community college system has the opportunity to reach not only the students, but their families.

For more than 15 years the California Community Colleges have successfully implemented a statewide awareness program, "I Can Afford College" that reach millions of students. Using successful techniques learned through this program, a Census 2020 Outreach campaign has been designed.

The campaign in multiple languages (primarily Spanish and English) includes the following activities:

- Produce videos, targeted social media, email and text messaging to students
- Create collateral materials and news articles to distribute system-wide
- Advertise Census Day, April 1, 2020 on IHeart radio and at campus events encouraging students to complete the census
- Recruit and train 50 students to become Census Outreach Ambassadors to reach 40,000 HTC students. They will: provide Census information; host events, orientations, activity fairs, and other campus events; work with different campus groups; and represent campus on local media

CALIFORNIA STATE UNIVERSITY

Target Population: 481,000 students

Proposed amount: \$325,000

Status: Proposed / In Discussion/ Interagency Agency

The California Complete Count Census office will work with the California State University through the Chancellor's Office to empower campuses to create customized outreach plans. This strategy provides funding to the Chancellor's Office for student incentive grants to Cal State University student-led organizations. It is proposed that a total of \$325,000 will be distributed on the 23 campuses and activities may include: media and events to motivate participation in Census 2020.

Grants will be dispersed based on HTC index and merit of the proposals at the Chancellor's discretion. The suggested criteria include: the HTC index, percent of students that are historically underrepresented and total population of the campus.

The Chancellor's Office will take into consideration these factors and present a proposed distribution of the funds. The Census Office is working with the Chancellor's Office ensuring that hard to count populations on college campuses are reached.

The Census office will work with the CSU Chancellor's office to determine the criteria and funding levels for the grants. This work has begun and will continue through December 2019. The census office will execute an interagency agreement with the CSU Chancellor's Office.

UNIVERSITY OF CALIFORNIA

Target Population: 258,000

Proposed amount: \$200,000

Status: In Discussion/ Interagency Agreement

The Census Office proposes to work with the University of California's system that focuses on student services that reach the hard to count populations who are enrolled in the UC schools. These programs may include the Basic Needs Center (serving students with food, housing, and financial insecurity) and the Centers for Educational Equity and Excellence (serving low-income, first-generation students, students of color, or undocumented students and non-traditional students, such as veterans, student parents, formerly incarcerated or foster youth).

The Census Office will provide:

- Flyers and posters to post and distribute to offices and students
- Sample texting and email messages for campus administrators to disseminate on existing listservs and communication mechanisms
- Access to the Partner Portal

The Census office is working with the University of California's Office of the President to identify criteria for campuses mini-grant distribution. This work will have a base amount allotted for student government groups who are engaged in voter registration and census awareness, along with funds that will be used to engage student organizations that focus on hard to count populations.

ASSOCIATION OF CALIFORNIA COLLEGES AND UNIVERSITIES

Target Population: 188,800

Proposed amount: 0

Status: Implementation Phase

The Association of California Colleges and Universities represents private nonprofit colleges (150) and for-profit institutions (200) (through the Association of Independent California Colleges and Universities).

The California Complete Count Census 2020 Office is working with the Association of California Colleges and Universities to share census outreach materials and present at various events. There have been several partners that have supported local efforts through this consortium. They include Lutheran University and Dominican University. Dominican University has made the 2019-2020 school year focus on understanding the impact of the census. The ACCIU governmental relations representatives have access to the Partner portal, for co-branding census outreach.

CALIFORNIA DEPARTMENT OF EDUCATION - ADULT EDUCATION

Target Population: 1,212,068

Proposed amount: 0

Status: Implementation Phase

The California Department of Education (CDE) hosts the Adult Education Division. Adult Education provides schools and classes for adult learners 18 years and older. These schools and classes support adult learners so that they may obtain general education diplomas, learn about jobs, and learn how to become a U.S. citizens. This program works as a collaboration with California's Community Colleges. This program serves many adults who are in the hard to count demographic groups.

The California Complete Count Census Office and Adult Education Division had a series of meetings to discuss coordinated approaches to census outreach. It was determined that a curriculum would be developed to teach adult learners about the census. The Department of Education and the Community College Chancellor's office worked together to create the curriculum . There were two different curricula developed: (1) The EL Civics Census Curriculum to understand the census and (2) a curriculum focused on how to become an enumerator for the U.S. census. These curricula have set a national standard for adult education. Adult education teachers in the Central Valley developed a phone application that alerts students as to where census jobs are located and when they are available in the central valley. This innovation reminds students about the census as well as providing them with opportunities to earn additional income.

The Community College League of California distributed over 200 Flyers at the Community College Public Information Officers annual conference in San Diego April 10-12, 2019. These informational flyers provided links to local complete count committees and information regarding toolkits.

Over 400 flyers with basic census information were distributed at the California Council for Adult Education conference, April 24-28, 2019 to administrators and principals of adult education schools.

The collaboration between the Census Office and the various stakeholders in the adult education world is ongoing. They are provided informational updates.

BUDGET FOR HIGHER EDUCATION

	Committed	Proposed
Foundation for California Community College	\$956,795	
California State University (Chancellor's Office)		\$325,000
University of California, Office of the President		\$200,000
Total		1,481,795

THE CALIFORNIA STATE UNIVERSITY
OFFICE OF THE CHANCELLOR

BAKERSFIELD

August 27, 2019

CHANNEL ISLANDS

CHICO

The Honorable Gavin Newsom
Governor, State of California
State Capitol
Sacramento, California 95814

DOMINGUEZ HILLS

EAST BAY

Dear Governor Newsom:

gavin

FRESNO

FULLERTON

Thank you for your recent letter concerning the 2020 Census. I assure you that the California State University (CSU), its trustees and campus leaders recognize its critical importance and are committed to doing all we can to ensure a full and accurate count.

HUMBOLDT

LONG BEACH

I shared your letter with our campus presidents last week, and during the resulting discussion, they uniformly expressed their enthusiasm about working with your staff, as well as the California Complete Count – Census 2020 office, to educate and engage the CSU's students and campus communities in this regard. We believe a response coordinated at the campus level will be the most effective, allowing for the wide range of capacities and resources across our 23 campuses, as well as variabilities associated with location and student population.

LOS ANGELES

MARITIME ACADEMY

MONTEREY BAY

NORTHRIDGE

As a next step, we have been in communication with your office to schedule time to meet with our presidents at the next gathering of my Senior Leadership Council, October 16-17 at the Sheraton Grand Sacramento. This will provide an opportunity for your staff to engage in dialog with our campus leaders to determine how we can best advance our shared goals for the 2020 Census across the CSU's campuses.

POMONA

SACRAMENTO

SAN BERNARDINO

Again, thank you for your letter. The CSU looks forward to partnering with you in our collective, statewide effort to ensure that all Californians are counted.

SAN DIEGO

SAN FRANCISCO

Sincerely,

SAN JOSÉ

Tim

SAN LUIS OBISPO

Timothy P. White
Chancellor

SAN MARCOS

SONOMA

STANISLAUS

UNIVERSITY OF CALIFORNIA

BERKELEY • DAVIS • IRVINE • LOS ANGELES • MERCED • RIVERSIDE • SAN DIEGO • SAN FRANCISCO



SANTA BARBARA • SANTA CRUZ

1111 Franklin Street
Oakland, CA 94607-5200
Phone: (510) 987-9074
<http://www.ucop.edu>

August 6, 2019

Governor Gavin Newsom
1303 10th Street, Suite 1173
Sacramento, California 95814

Re: Response to Governor Newsom's letter regarding 2020 Census Partnership with the University of California


Dear Governor Newsom:

Thank you for your letter of July 17 regarding the 2020 Census, and for your request to partner with each other to ensure that we engage all populations, including UC students, in the process. I fully appreciate the significance of the census and its impact on our institutions and the day-to-day lives of California residents.

Your letter comes at an opportune time as several of our campuses have just begun their initial planning efforts for the 2020 Census. I will share your letter with our Chancellors, asking that they ensure each campus meets—at minimum—the five commitments you have outlined, and that they have an identified point of contact responsible for coordinating their 2020 Census effort. In addition, I am asking that Student Affairs and External Relations and Communications at the Office of the President take the lead in co-facilitating systemwide discussion and collaboration with your California Complete Count—Census 2020 Office, to ensure our efforts are aligned and that our campuses benefit from their expertise.

I am confident that through this partnership, our collective efforts can lead to a successful 2020 Census. Thank you for your leadership on this critical issue.

Yours very truly,


Janet Napolitano
President

cc: University of California Board of Regents
Provost and Executive Vice President Michael Brown
Senior Vice President, External Relations and Communications Claire Holmes
Student Affairs Interim Vice President Yvette Gullatt
Student Development & Engagement Assistant Director Eric Heng

RESOLUTION OF THE BOARD OF GOVERNORS
CALIFORNIA COMMUNITY COLLEGES
NO. 2019-12

WHEREAS, the U.S. Census Bureau is required by Article 1, Section 2 of the U.S. Constitution to conduct a complete and accurate count of every resident in the nation every ten years; and

WHEREAS, Census data is used to distribute billions of dollars in federal funding to local communities and used to determine the number of seats California has in the U.S. House of Representatives, both of which are critical to state and local governments; and

WHEREAS, a significant amount of effort is required in order to achieve a full participation in the 2020 U.S. Census; especially in the California Community College System which has multiple of the highest hard to count residents is the state; and

WHEREAS, the California Community Colleges have the opportunity to obtain funds through county-based Local Compete Count Census Committees which have a proposed allocation of \$27 million dollars; and

WHEREAS, the California Community Colleges may focus its efforts on reaching the hard-to-count populations and students living in communities with hard-to-count populations; and

WHEREAS, community colleges may actively participate in the Local Complete Count Committees of counties where community college campuses are positioned; and

WHEREAS, campuses may designate general locations on campus for Questionnaire Assistance Centers (QAC) and Questionnaires Assistance Kiosks (QAK's), where students can go to complete their Census questionnaires; and

WHEREAS, major campus entities including libraries, resource centers, student organizations, etc. may collaborate to assist students with Census related outreach activities, including lectures, panels and U.S. Census recruitment fairs; and

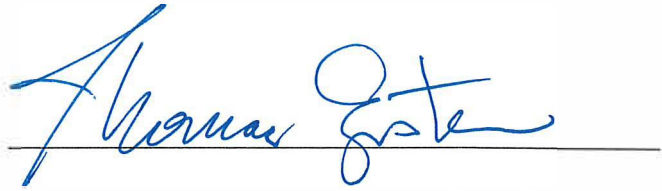
WHEREAS, the Vision for Success encourages students as decision-makers and students will take a leading role in peer-to-peer census jobs and education, and a statewide partnership with the Student Senate for California Community Colleges will ensure there is actual student-to-student-participation; now therefore, be it

RESOLVED, that the California Community Colleges Board of Governors encourages all 73 districts and 115 colleges that constitute the system of the California Community Colleges to participate in California's Complete Count Census statewide outreach efforts to have a complete count and accurate count of all Californians; and be it further

RESOLVED, that the Board of Governors of the California Community Colleges encourages community college districts to collaborate with its students, faculty, and staff to adopt a local resolution and plan to ensure that every community is accurately counted in the 2020 U.S. Census.

Vote Count: 15:0

Dated: May 20, 2019



Tom Epstein, President
Board of Governors California Community Colleges

EXHIBIT E

(The remainder of this page intentionally left blank)



State Agency Outreach Activity Type

State Agency and Department Name	Call Center Messaging	Eblasts	Events/ In Person Promotion	Mailings/ Inserts	Articles /Blogs	Materials Distribution	Signage	Possible QAC/QAK Host	Social Media	Digital/ Web
Business, Consumer Services and Housing Agency (BCSH)										
Agency	X	X			X			X		X
Dept of Alcoholic Beverage Control (ABC)		X				X			X	X
Dept of Business Oversight (BCSH)					X				X	X
Depart of Consumer Affairs (DCA)	X	X		X	X				X	X
Dept of Fair Employment and Housing (DFEH)	X		X						X	X
Dept of Housing and Community Development (HCD)		X	X		X				X	X
CA Housing Finance Authority			X	X	X		X		X	X
Dept Real Estate				X	X				X	X
Covered California				X						
Dept of Corrections and Rehabilitation (CDCR)				X		X		X		X
Office of Emergency Services (CalOES)		X		X	X				X	X
Fi\$cal	X				X				X	X

	Call Center Messaging	Eblasts	Events/In Person Promotion	Mailings/ Inserts	Articles /Blogs	Materials Distribution	Signage	Possible QAC/QAK Host	Social Media	Digital/ Web
Dept of Food and Agriculture - Fairs Division (CDFA)			X		X	X	X	X		
Government Operations Agency (GovOps)										
Dept of General Services (DGS)				X	X	X				X
Franchise Tax Board (FTB)	X					X	X	X		X
CalHR	X		X	X	X					
CA Public Employees' Retirement System (CalPERS)			X	X	X	X	X			X
CA Teachers' Retirement System (CalSTRS)	X	X		X	X		X		X	
Dept of Tax and Fee Authority (CDTFA)	X	X			X	X		X	X	X
CA Dept of Technology									X	X
CA Victims Compensation Board				X	X				X	X
Health and Human Services Agency (CHHS)										
Agency			X					X		
Dept of Child Support Services (DCSS)	X			X	X	X			X	X
Dept of Aging (CDA)			X		X	X				X
Dept of Community Services & Development (CSD)	X								X	X
Dept of Social Services (CDSS)	X	X	X	X		X				

	Call Center Messaging	Eblasts	Events/In Person Promotion	Mailings/ Inserts	Articles /Blogs	Materials Distribution	Signage	Possible QAC/QAK Host	Social Media	Digital/ Web
Dept of Health Care Services (DHCS)	X			X						
Dept of Managed Health Care (DMHC)	X									
Labor and Workforce Development Agency (LWDA)										
Agency					X				X	X
Employment Development Dept (EDD)	X	X	X		X	X		X	X	X
Dept of Industrial Relations (DIR)			X		X	X		X	X	X
CA Workforce Development Board						X				X
CA Lottery	X		X	X	X	X	X			X
Dept of Parks and Rec (State Parks)								X		
State Transportation Agency (CalSTA)										
Dept of Motor Vehicles (DMV)	X				X	X	X	X	X	X
Caltrans	X		X	X	X	X	X	X	X	X
CalVet				X		X				X
CA Volunteers		X						X		X

EXHIBIT F

(The remainder of this page intentionally left blank)

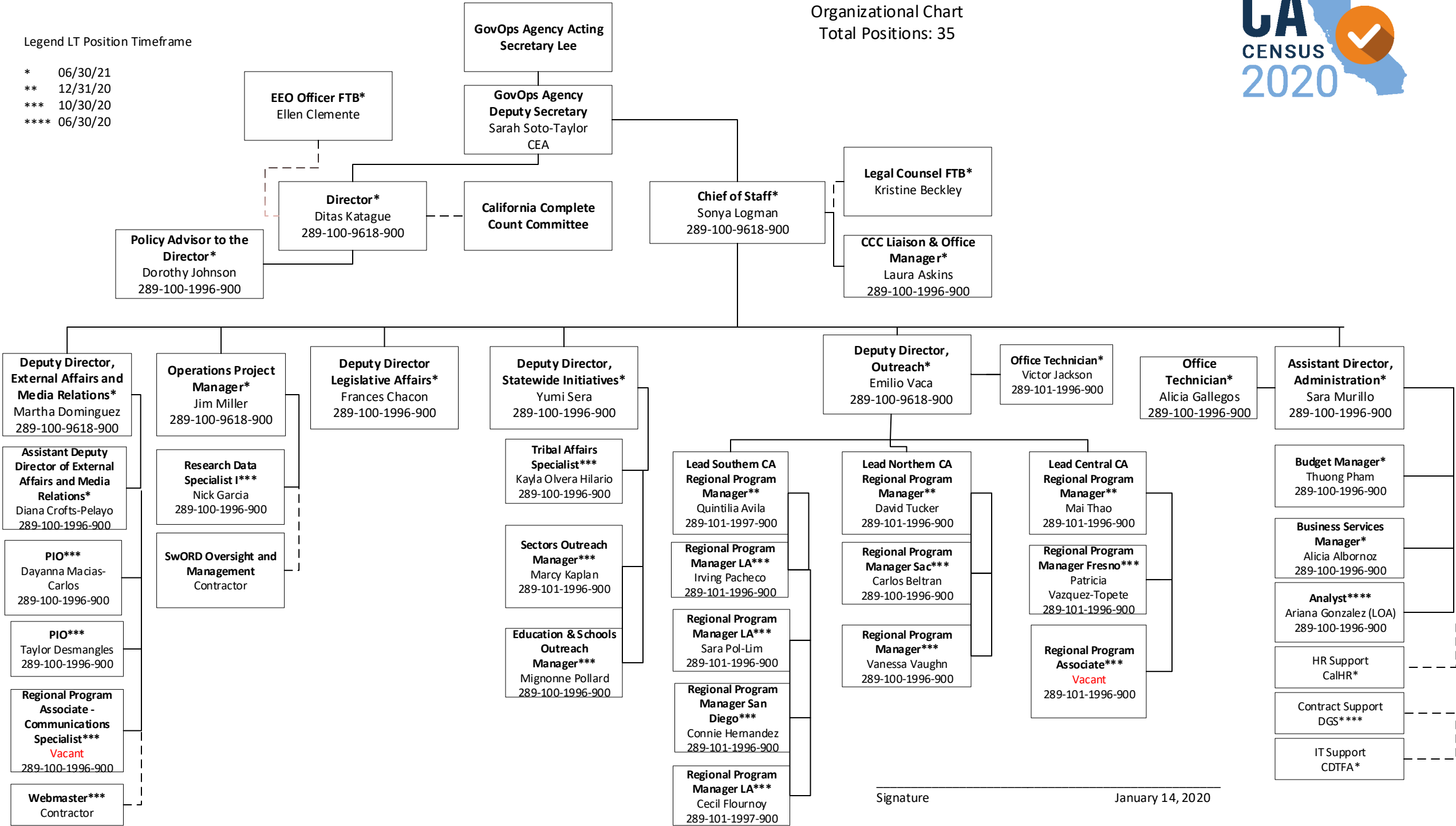
California Complete Count – Census 2020

Organizational Chart
Total Positions: 35



Legend LT Position Timeframe

- * 06/30/21
- ** 12/31/20
- *** 10/30/20
- **** 06/30/20



Signature

January 14, 2020

EXHIBIT G

(The remainder of this page intentionally left blank)



County, Complete Count Committee and County Office of Education Contacts

*Denotes county served by alternate fiscal agent

Alameda County

Region 3

Primary contact: Casey Farmer
casey.farmer@acgov.org | 510-393-0388
Complete Count Committee contact / chair: Casey Farmer
Casey.Farmer@acgov.org
CA Census Office Lead: David Tucker
David.Tucker@census.ca.gov | 916-215-5037

Alameda County Office of Education

Region 3

Primary contact: Laura Forrest
lforrest@acoe.org | 510-670-7754
CA Census Office Lead: Mignonne Pollard
Mignonne.Pollard@census.ca.gov | 916-214-9835

Alpine County*

Region 4

Primary contact: Pablo Rodriguez | Faith in Action Network
pablo@cncedfund.org | 916-542-8490
Complete Count Committee contact / chair: N/A
CA Census Office Lead: Emilio Vaca
Emilio.Vaca@census.ca.gov | 916-200-5842

Amador County*

Region 4

Primary contact: Pablo Rodriguez | Faith in Action Network
pablo@cncedfund.org | 916-542-8490
Complete Count Committee contact / chair: N/A
CA Census Office Lead: Emilio Vaca
Emilio.Vaca@census.ca.gov | 916-200-5842

Butte County*

Region 1

Primary contact: Niva Flor | Sacramento Region Community Foundation
census2020@sacregcf.org | 916-921-7724
Complete Count Committee contact / chair: Megan Smith | North Valley Community Foundation
buttecountycensus2020@nvcf.org
CA Census Office Lead: Vanessa Vaughn
Vanessa.Vaughn@census.ca.gov | 916-406-5299

Calaveras County

Region 4

Primary contact: Kathryn Gallino

kgallino@co.calaveras.ca.us |

Complete Count Committee contact / chair: Kathy Gallino

kgallino@co.calaveras.ca.us

CA Census Office Lead: Emilio Vaca

Emilio.Vaca@census.ca.gov | 916-200-5842

Colusa County

Region 1

Primary contact: Donna Dennis

donna.dennis@countyofcolusa.com | 530-458-0290

Complete Count Committee contact / chair: Elizabeth Kelly

ekelly@colusadhhs.org

CA Census Office Lead: Vanessa Vaughn

Vanessa.Vaughn@census.ca.gov | 916-406-5299

Contra Costa County

Region 3

Primary contact: Barbara Riveira

Barbara.Riveira@cao.cccounty.us | 925-335-1018

Complete Count Committee contact / chair: Diane Burgis

CA Census Office Lead: David Tucker

David.Tucker@census.ca.gov | 916-215-5037

Contra Costa County Office of Education

Region 3

Primary contact: Terry Koehne

tkoehne@cccoc.k12.ca.us | 925-942-3420

CA Census Office Lead: Mignonne Pollard

Mignonne.Pollard@census.ca.gov | 916-214-9835

Del Norte County

Region 2

Primary contact: Connie Stewart | California Center for Rural Policy

ces54@humboldt.edu | 707-826-3402

Complete Count Committee contact / chair: Not identified

CA Census Office Lead: Carlos Beltran

Carlos.Beltran@census.ca.gov | 916-214-1993

El Dorado County*

Region 1

Primary contact: Niva Flor | Sacramento Region Community Foundation

census2020@sacregcf.org | 916-921-7725

Complete Count Committee contact / chair: Bill Roby | El Dorado Community Foundation

bill@eldoradocf.org

CA Census Office Lead: Vanessa Vaughn

Vanessa.Vaughn@census.ca.gov | 916-406-5299

El Dorado County Office of Education

Region 1

Primary contact: Dina Gentry
Dgentry@edcoe.org | 530-295-2229
Complete Count Committee contact / chair:
CA Census Office Lead: Mignonne Pollard
Mignonne.Pollard@census.ca.gov | 916-214-9835

Fresno County

Region 6

Primary contact: Katherine Martindale
martik@fresnocountyca.gov | 559-675-7821
Complete Count Committee contact / chair: Kaya Herron
kaya@fmbcc.com
CA Census Office Lead: Mai Thao
Mai.Thao@census.ca.gov | 916-467-5870

Fresno County Office of Education

Region 6

Primary contact: Evaristo Trevino
etrevino@fcoe.org | 559-265-3010 x3210
CA Census Office Lead: Mignonne Pollard
Mignonne.Pollard@census.ca.gov | 916-214-9835

Glenn County*

Region 1

Primary contact: Niva Flor | Sacramento Region Community Foundation
census2020@sacregcf.org | 916-921-7726
Complete Count Committee contact / chair: N/A
CA Census Office Lead: Vanessa Vaughn
Vanessa.Vaughn@census.ca.gov | 916-406-5299

Humboldt County

Region 2

Primary contact: Connie Stewart | California Center for Rural Policy
ces54@humboldt.edu | 707-826-3402
Complete Count Committee contact / chair: Not identified
CA Census Office Lead: Carlos Beltran
Carlos.Beltran@census.ca.gov | 916-214-1993

Humboldt County Office of Education

Region 2

Primary contact: Jenny Bowen
jbowen@HCOE.org | 707-445-7767
CA Census Office Lead: Mignonne Pollard
Mignonne.Pollard@census.ca.gov | 916-214-9835

Imperial County

Region 10

Primary contact: Esperanza Colio Warren

esperanzacolio@co.imperial.ca.us | 442-265-1011

Complete Count Committee contact / chair: Esperanza Colio Warren

esperanzacolio@co.imperial.ca.us | 442-265-1011

CA Census Office Lead: Connie Hernandez

Connie.Hernandez@census.ca.gov | 916-508-8504

Imperial County Office of Education

Region 10

Primary contact: Todd Evangelist

Todd.eangelist@icoe.org | 760-312-6177

CA Census Office Lead: Mignonne Pollard

Mignonne.Pollard@census.ca.gov | 916-214-9835

Inyo County

Region 6

Primary contact: Cathreen Richards

crichards@inyocounty.us | 760-878-0447

Complete Count Committee contact / chair: Cathreen Richards

crichards@inyocounty.us

CA Census Office Lead: Mai Thao

Mai.Thao@census.ca.gov | 916-467-5870

Kern County

Region 6

Primary contact: Thomas Brown

brownt@kerncounty.com | 661-868-3159

Complete Count Committee contact / chair: Thomas Brown, Alejandra Garcia

brownt@kerncounty.com

CA Census Office Lead: Mai Thao

Mai.Thao@census.ca.gov | 916-467-5870

Kern County Office of Education

Region 6

Primary contact: Linda Pickett

lipickett@kern.org | 661-636-4653

CA Census Office Lead: Mignonne Pollard

Mignonne.Pollard@census.ca.gov | 916-214-9835

Kings County

Region 6

Primary contact: Kyria Martinez

Kyria.Martinez@co.kings.ca.us | 559-600-3230

Complete Count Committee contact / chair: Kyria Martinez

Kyria.Martinez@co.kings.ca.us

CA Census Office Lead: Mai Thao

Mai.Thao@census.ca.gov | 916-467-5870

Lake County

Region 2

Primary contact: Rachael Dillman
Rachael.Dillman@lakecountycalifornia.gov | 707-995-4290
Complete Count Committee contact / chair: Rachael Dillman
Rachael.Dillman@lakecountycalifornia.gov
CA Census Office Lead: Carlos Beltran
Carlos.Beltran@census.ca.gov | 916-214-1993

Lake County Office of Education

Region 2

Primary contact: Brock Flackenburg
bfalkenberg@lakecoe.org | 707-262-4100
CA Census Office Lead: Mignonne Pollard
Mignonne.Pollard@census.ca.gov | 916-214-9835

Lassen County*

Region 1

Primary contact: Niva Flor | Sacramento Region Community Foundation
census2020@sacregcf.org | 916-921-7727
Complete Count Committee contact / chair: N/A
CA Census Office Lead: Vanessa Vaughn
Vanessa.Vaughn@census.ca.gov | 916-406-5299

Los Angeles County

Region 8

Primary contact: Avianna Uribe
auribe@ceo.lacounty.gov |
Complete Count Committee contact / chair: Avianna Uribe, Maria Garcia
auribe@ceo.lacounty.gov, maria.garcia@lacounty.gov
CA Census Office Lead: Cecil Flournoy
Cecil.Flournoy@census.ca.gov | 916-214-7484

Los Angeles County Office of Education

Region 8

Primary contact: Carolina Sheinfeld
sheinfeld_carolina@laoe.edu | 562-803-8553
CA Census Office Lead: Mignonne Pollard
Mignonne.Pollard@census.ca.gov | 916-214-9835

Madera County

Region 4

Primary contact: Jamie Bax
jamie.bax@maderacounty.com | 559-675-7821
Complete Count Committee contact / chair: Jamie Bax
jamie.bax@maderacounty.com
CA Census Office Lead: Emilio Vaca
Emilio.Vaca@census.ca.gov | 916-200-5842

Marin County

Region 3

Primary contact: Kristin Drumm

KDrumm@marincounty.org | 415-473-6269

Complete Count Committee contact / chair: Dennis Rodoni, Kate Colin

CA Census Office Lead: David Tucker

David.Tucker@census.ca.gov | 916-215-5037

Marin County Office of Education

Region 3

Primary contact: Karen Allen

kallen@marinschools.org | 415-499-5867

CA Census Office Lead: Mignonne Pollard

Mignonne.Pollard@census.ca.gov | 916-214-9835

Mariposa County

Region 4

Primary contact: Rebecca Maietto

rmaietto@mariposahsc.org |

Complete Count Committee contact / chair: Rebecca Maietto

rmaietto@mariposahsc.org

CA Census Office Lead: Patricia Vazquez-Topete

Patricia.Vazquez-Topete@census.ca.gov | 916-718-4911

Mendocino County

Region 2

Primary contact: Julie Beardsley

beardsleyj@mendocinocounty.org | 707-472-2684

Complete Count Committee contact / chair: Julie Beardsley

beardsleyj@mendocinocounty.org

CA Census Office Lead: Carlos Beltran

Carlos.Beltran@census.ca.gov | 916-214-1993

Mendocino County Office of Education

Region 2

Primary contact: Molly Snider

Msnider@mcoe.us | 707-467-5000

CA Census Office Lead: Mignonne Pollard

Mignonne.Pollard@census.ca.gov | 916-214-9835

Merced County

Region 4

Primary contact: Amber Phillips

amber.phillips@countyofmerced.com |

Complete Count Committee contact / chair: Amber Phillips

amber.phillips@countyofmerced.com

CA Census Office Lead: Patricia Vazquez-Topete

Patricia.Vazquez-Topete@census.ca.gov | 916-718-4911

Merced County Office of Education

Region 4

Primary contact: Audry Garza
AuGarza@mcoe.org | 209-381-5991
CA Census Office Lead: Mignonne Pollard
Mignonne.Pollard@census.ca.gov | 916-214-9835

Modoc County

Region 1

Primary contact: Tiffany Martinez
tiffanymartinez@co.modoc.ca.us | 530-233-6201
Complete Count Committee contact / chair: Not identified
CA Census Office Lead: Vanessa Vaughn
Vanessa.Vaughn@census.ca.gov | 916-406-5299

Mono County*

Region 4

Primary contact: Pablo Rodriguez | Faith in Action Network
pablo@cncedfund.org | 916-542-8492
Complete Count Committee contact / chair: N/A
CA Census Office Lead: Emilio Vaca
Emilio.Vaca@census.ca.gov | 916-200-5842

Monterey County

Region 5

Primary contact: Rosemary Soto
SotoRY1@co.monterey.ca.us |
Complete Count Committee contact / chair: Rosemary Soto
SotoRY1@co.monterey.ca.us
CA Census Office Lead: Patricia Vazquez-Topete
Patricia.Vazquez-Topete@census.ca.gov | 916-718-4911

Monterey County Office of Education

Region 5

Primary contact: Carla Strobbridge Stewart
cstewart@montereycoe.org | 831-784-4244
CA Census Office Lead: Mignonne Pollard
Mignonne.Pollard@census.ca.gov | 916-214-9835

Napa County

Region 2

Primary contact: Mary Booher
mary.booher@countyofnapa.org | 707-253-4153
Complete Count Committee contact / chair: Mary Booher
mary.booher@countyofnapa.org
CA Census Office Lead: Carlos Beltran
Carlos.Beltran@census.ca.gov | 916-214-1993

Napa County Office of Education

Region 2

Primary contact: Seana Wagner
swagner@napacoe.org | 707-253-6832
CA Census Office Lead: Mignonne Pollard
Mignonne.Pollard@census.ca.gov | 916-214-9835

Nevada County

Region 1

Primary contact: Taylor Wolfe
taylor.wolfe@co.nevada.ca.us | 530-265-7020
Complete Count Committee contact / chair:
CA Census Office Lead: Emilio Vaca
Emilio.Vaca@census.ca.gov | 916-200-5842

Orange County

Region 9

Primary contact: Saul Viramontes
saul.viramontes@ocgov.com | 714-834-4755
Complete Count Committee contact / chair: Saul Viramontes
saul.viramontes@ocgov.com
CA Census Office Lead: Sara Pol-Lim
Sara.Pol-Lim@census.ca.gov | 916-210-9358

Orange County Office of Education

Region 9

Primary contact: Jeff Hittenberger
JHittenberger@ocde.us | 714-966-4000
CA Census Office Lead: Mignonne Pollard
Mignonne.Pollard@census.ca.gov | 916-214-9835

Placer County

Region 1

Primary contact: Todd Leopold
tleopold@placer.ca.gov |
Complete Count Committee contact / chair: Nikki Streegan, Raul Martinez
CA Census Office Lead: Emilio Vaca
Emilio.Vaca@census.ca.gov | 916-200-5842

Placer County Office of Education

Region 1

Primary contact: Lori Grasberger
agrasberger@placercoe.k12.ca.us | 530-745-1492
CA Census Office Lead: Mignonne Pollard
Mignonne.Pollard@census.ca.gov | 916-214-9835

Plumas County*

Region 1

Primary contact: Niva Flor | Sacramento Region Community Foundation
census2020@sacregcf.org | 916-921-7728

Complete Count Committee contact / chair: N/A

CA Census Office Lead: Vanessa Vaughn
Vanessa.Vaughn@census.ca.gov | 916-406-5299

Riverside County

Region 7

Primary contact: Jason Farin
jfarin@rivco.org |

Complete Count Committee contact / chair: Karthick Ramakrishanan
karthick@ucr.edu

CA Census Office Lead: Quintilia Avila
Quintilia.Avila@census.ca.gov | 916-208-2797

Riverside County Office of Education

Region 7

Primary contact: Ana M Farfan
afarfan@rcoe.us | 951-826-6530

CA Census Office Lead: Mignonne Pollard
Mignonne.Pollard@census.ca.gov | 916-214-9835

Sacramento County

Region 1

Primary contact: Judy Robinson
robinsonju@SacCounty.net | 916-874-4551

Complete Count Committee contact / chair: Gabby Trejo, Niva Flor
census2020@sacregcf.org

CA Census Office Lead: Vanessa Vaughn
Vanessa.Vaughn@census.ca.gov | 916-406-5299

Sacramento County Office of Education

Region 1

Primary contact: Frank Pisi
fpisi@scoe.net | 916-228-2239

CA Census Office Lead: Mignonne Pollard
Mignonne.Pollard@census.ca.gov | 916-214-9835

San Benito County

Region 5

Primary contact: Dulce Alonso
dalonso@cosb.us | 831-636-4000

Complete Count Committee contact / chair: Dulce Alonso
dalonso@cosb.us

CA Census Office Lead: Patricia Vazquez-Topete
Patricia.Vazquez-Topete@census.ca.gov | 916-718-4911

San Benito County Office of Education

Region 5

Primary contact: Krystal Lomanto

lgr@sbcss.net | 831-784-4244

CA Census Office Lead: Mignonne Pollard

Mignonne.Pollard@census.ca.gov | 916-214-9835

San Bernardino County

Region 7

Primary contact: Danette Tealer

danette.tealer@cao.sbcounty.gov |

Complete Count Committee contact / chair: Karthick Ramakrishanan

karthick@ucr.edu

CA Census Office Lead: Quintilia Avila

Quintilia.Avila@census.ca.gov | 916-208-2797

San Bernardino County Office of Education

Region 7

Primary contact: Barbara Lane

Barbara.Lane@sbcss.net | 909-386-2947

CA Census Office Lead: Mignonne Pollard

Mignonne.Pollard@census.ca.gov | 916-214-9835

San Diego County (SANDAG)

Region 10

Primary contact: Darlanne Hctor Mulmat

darlanne.mulmat@sandag.org | 619-699-7326

Complete Count Committee contact / chair: Darlanne Hctor Mulmat

darlanne.mulmat@sandag.org

CA Census Office Lead: Connie Hernandez

Connie.Hernandez@census.ca.gov | 916-508-8504

San Diego County Office of Education

Region 10

Primary contact: Music Watson, APR

music.watson@sdcoe.net | 858-292-3719

CA Census Office Lead: Mignonne Pollard

Mignonne.Pollard@census.ca.gov | 916-214-9835

San Francisco County

Region 3

Primary contact: Adrienne Pon

adrienne.pon@sfgov.org |

Complete Count Committee contact / chair: Anni Chung, Andrea Shorter

CA Census Office Lead: David Tucker

David.Tucker@census.ca.gov | 916-215-5037

San Francisco County Office of Education

Region 3

Primary contact: Christina M. Y. Wong
wongc8@sfusd.edu | 415-241-6121
CA Census Office Lead: Mignonne Pollard
Mignonne.Pollard@census.ca.gov | 916-214-9835

San Joaquin County*

Region 4

Primary contact: Pablo Rodriguez | Faith in Action Network
pablo@cncedfund.org | 916-542-8493
Complete Count Committee contact / chair: Hugo Morales, Kaya Herron, Elizabeth Jonasson
hugom@pacbell.net
CA Census Office Lead: Emilio Vaca
Emilio.Vaca@census.ca.gov | 916-200-5842

San Joaquin County Office of Education

Region 4

Primary contact: Marlene Flau
mflau@sjcoe.net | 209-468-4976
CA Census Office Lead: Mignonne Pollard
Mignonne.Pollard@census.ca.gov | 916-214-9835

San Luis Obispo County

Region 5

Primary contact: Kristin Eriksson
keriksson@co.slo.ca.us. | 805-781-5014
Complete Count Committee contact / chair: Kristin Eriksson, Morgan Torell
keriksson@co.slo.ca.us.
CA Census Office Lead: Patricia Vazquez-Topete
Patricia.Vazquez-Topete@census.ca.gov | 916-718-4911

San Luis Obispo County Office of Education

Region 5

Primary contact: Michael Garrett
mgarrett@slococoe.org | 805-782-7201
CA Census Office Lead: Mignonne Pollard
Mignonne.Pollard@census.ca.gov | 916-214-9835

San Mateo County

Region 3

Primary contact: Megan Gosch
mgosch@smcgov.org |
Complete Count Committee contact / chair: Emma Gonzalez, Georgia Antonopolous, Rosanne Foust
elgonzalez@smcgov.org
CA Census Office Lead: David Tucker
David.Tucker@census.ca.gov | 916-215-5037

San Mateo County Office of Education

Region 3

Primary contact: Mefula Fairley
mfairley@smcoe.org | 650-802-5553
CA Census Office Lead: Mignonne Pollard
Mignonne.Pollard@census.ca.gov | 916-214-9835

Santa Barbara County

Region 5

Primary contact: Joni Maiden
Jmaiden@co.santa-barbara.ca.us
Complete Count Committee contact / chair: Joni Maiden
CA Census Office Lead: Patricia Vazquez-Topete
Patricia.Vazquez-Topete@census.ca.gov | 916-718-4911

Santa Barbara County Office of Education

Region 5

Primary contact: Valerie Cantella
vcantella@sbceo.org | 805-964-4711 ext. 5282
CA Census Office Lead: Mignonne Pollard
Mignonne.Pollard@census.ca.gov | 916-214-9835

Santa Clara County

Region 3

Primary contact: Nicholas Kuwada
nicholas.kuwada@ceo.sccgov.org |
Complete Count Committee contact / chair: David Campos
CA Census Office Lead: David Tucker
David.Tucker@census.ca.gov | 916-215-5037

Santa Clara County Office of Education

Region 3

Primary contact: Dr. Mary Ann Dewan
Maryann_dwan@sccoe.org | 408-453-6511
CA Census Office Lead: Mignonne Pollard
Mignonne.Pollard@census.ca.gov | 916-214-9835

Santa Cruz County

Region 5

Primary contact: Peter Detlefs
peter.detlefs@santacruzcounty.us |
Complete Count Committee contact / chair: Ryan Coonery
2020census@santacruzcounty.us
CA Census Office Lead: Patricia Vazquez-Topete
Patricia.Vazquez-Topete@census.ca.gov | 916-718-4911

Santa Cruz County Office of Education

Region 5

Primary contact: Michael Paynter
mpaynter@santacruzcoe.org | 831-466-5729
CA Census Office Lead: Mignonne Pollard
Mignonne.Pollard@census.ca.gov | 916-214-9835

Shasta County

Region 1

Primary contact: Denise Keokhamdy
dkeokhamdy@co.shasta.ca.us | 530-245-6493
Complete Count Committee contact / chair: Denise Keokhamdy
dkeokhamdy@co.shasta.ca.us
CA Census Office Lead: Carlos Beltran
Carlos.Beltran@census.ca.gov | 916-214-1993

Shasta County Office of Education

Region 1

Primary contact: Austin Preller
Apreller@shastacoe.org | 530-225-5390
CA Census Office Lead: Mignonne Pollard
Mignonne.Pollard@census.ca.gov | 916-214-9835

Sierra County*

Region 1

Primary contact: Niva Flor | Sacramento Region Community Foundation
census2020@sacregcf.org | 916-921-7729
Complete Count Committee contact / chair: N/A
CA Census Office Lead: Vanessa Vaughn
Vanessa.Vaughn@census.ca.gov | 916-406-5299

Siskiyou County*

Region 1

Primary contact: Niva Flor | Sacramento Region Community Foundation
census2020@sacregcf.org | 916-921-7730
Complete Count Committee contact / chair: N/A
CA Census Office Lead: Vanessa Vaughn
Vanessa.Vaughn@census.ca.gov | 916-406-5299

Siskiyou County Office of Education

Region 1

Primary contact: Nancy Grenvik
ngrenvik@siskiyoucoe.net | 530-842-8457
CA Census Office Lead: Mignonne Pollard
Mignonne.Pollard@census.ca.gov | 916-214-9835

Solano County

Region 3

Primary contact: Robert Burris | Solano Economic Development Corporation
robert@solanoedc.org | 707-864-1855

Complete Count Committee contact / chair: Robert Burris
robert@solanoedc.org

CA Census Office Lead: David Tucker
David.Tucker@census.ca.gov | 916-215-5037

Solano County Office of Education

Region 3

Primary contact: Tommy Welch
TWelch@solanocoe.net | 707-399-4430

CA Census Office Lead: Mignonne Pollard
Mignonne.Pollard@census.ca.gov | 916-214-9835

Sonoma County

Region 2

Primary contact: Nour Maxwell
nour.maxwell@sonoma-county.org | 707-565-1269

Complete Count Committee contact / chair: Nour Maxwell
nour.maxwell@sonoma-county.org

CA Census Office Lead: Carlos Beltran
Carlos.Beltran@census.ca.gov | 916-214-1993

Sonoma County Office of Education

Region 2

Primary contact: Steve Herrington
sherrington@scoe.org | 707-524-2603

CA Census Office Lead: Mignonne Pollard
Mignonne.Pollard@census.ca.gov | 916-214-9835

Stanislaus County

Region 4

Primary contact: Damian Martinez
martinezda@stancounty.com |

Complete Count Committee contact / chair: Lisa Vela, Sam David, John Aguirre
lvel@elconcilio.org

CA Census Office Lead: Emilio Vaca
Emilio.Vaca@census.ca.gov | 916-200-5842

Stanislaus County Office of Education

Region 4

Primary contact: Violeta Cuevas
vcuevas@stancoe.org | 209-238-1801

CA Census Office Lead: Mignonne Pollard
Mignonne.Pollard@census.ca.gov | 916-214-9835

Stockton (City of)

Region 4

Primary contact: Albert Rivas
albert.rivas@stocktonca.gov |

Complete Count Committee contact / chair:

CA Census Office Lead: Emilio Vaca
Emilio.Vaca@census.ca.gov | 916-200-5842

Sutter County

Region 1

Primary contact: Brynda Stranix | Yuba-Sutter Economic Development Corporation
bstranix@ysedc.org | 530-751-8555

Complete Count Committee contact / chair: Brynda Stranix
bstranix@ysedc.org

CA Census Office Lead: Vanessa Vaughn
Vanessa.Vaughn@census.ca.gov | 916-406-5299

Sutter County Office of Education

Region 1

Primary contact: Brynda Stranix
bstranix@ysedc.org | 530-751-8559

CA Census Office Lead: Mignonne Pollard
Mignonne.Pollard@census.ca.gov | 916-214-9835

Tehama County

Region 1

Primary contact: Dava Kohlman
dkohlman@co.tehama.ca.us | 530-527-4655

Complete Count Committee contact / chair: Tara Loucks-Shepard
TLoucks@tcdss.org

CA Census Office Lead: Vanessa Vaughn
Vanessa.Vaughn@census.ca.gov | 916-406-5299

Tehama County Office of Education

Region 1

Primary contact: Jim Southwick
jsouthwick@tehamaschools.org | 530-528-7322

CA Census Office Lead: Mignonne Pollard
Mignonne.Pollard@census.ca.gov | 916-214-9835

Trinity County

Region 2

Primary contact: Connie Stewart | California Center for Rural Policy
ces54@humboldt.edu | 707-826-3402

Complete Count Committee contact / chair: Not identified

CA Census Office Lead: Carlos Beltran
Carlos.Beltran@census.ca.gov | 916-214-1993

Tulare County

Region 6

Primary contact: Barbara Pilegard
bpilegard@tularecog.org | 559-623-0450
Complete Count Committee contact / chair: Barbara Pilegard
bpilegard@tularecog.org
CA Census Office Lead: Mai Thao
Mai.Thao@census.ca.gov | 916-467-5870

Tulare County Office of Education

Region 6

Primary contact: Robert Herman
robh@tcoe.org | 559-733-6606
CA Census Office Lead: Mignonne Pollard
Mignonne.Pollard@census.ca.gov | 916-214-9835

Tuolumne County

Region 4

Primary contact: David Gonzalves
dgonzalves@co.tuolumne.ca.us |
Complete Count Committee contact / chair: David Gonzalves
dgonzalves@co.tuolumne.ca.us
CA Census Office Lead: Emilio Vaca
Emilio.Vaca@census.ca.gov | 916-200-5842

Tuolumne County Office of Education

Region 4

Primary contact: Cathy Parker
cparker@tcsos.us | 209-536-2000
CA Census Office Lead: Mignonne Pollard
Mignonne.Pollard@census.ca.gov | 916-214-9835

Ventura County

Region 5

Primary contact: Mike Pettit
mike.pettit@ventura.org | 805-654-2864
Complete Count Committee contact / chair: Rigoberto Vargas, Vanessa Bechtel
rigoberto.vargas@ventura.org
CA Census Office Lead: Patricia Vazquez-Topete
Patricia.Vazquez-Topete@census.ca.gov | 916-718-4911

Yolo County

Region 1

Primary contact: Jenny Tan
jenny.tan@yolocounty.org | 530-666-8170
Complete Count Committee contact / chair: Jenny Tan, Dana Carey
Jenny.Tan@yolocounty.org
CA Census Office Lead: Vanessa Vaughn
Vanessa.Vaughn@census.ca.gov | 916-406-5299

Yolo County Office of Education

Region 1

Primary contact: Frank Pisi
fpisi@scoe.net | 916-228-2239

CA Census Office Lead: Mignonne Pollard
Mignonne.Pollard@census.ca.gov | 916-214-9835

Yuba County

Region 1

Primary contact: Brynda Stranix | Yuba-Sutter Economic Development Corporation
bstranix@ysedc.org | 530-751-8555

Complete Count Committee contact / chair: Brynda Stranix
bstranix@ysedc.org

CA Census Office Lead: Vanessa Vaughn
Vanessa.Vaughn@census.ca.gov | 916-406-5299

Yuba County Office of Education

Primary contact: Brynda Stranix
bstranix@ysedc.org | 530-751-8559

CA Census Office Lead: Mignonne Pollard
Mignonne.Pollard@census.ca.gov | 916-214-9835

Administrative Community Based Organizations

The Administrative Community-Based Organizations (ACBOs) target hard-to-count populations in California's 10 regions.

REGION 1

Sacramento Region Community Foundation

Niva Flor
Chief Impact & Strategy Officer
niva@sacregcf.org
916-921-7723
CA Census Staff Lead: Vanessa Vaughn

REGION 2

United Way of the Wine Country

Nicollette Weinzeig
Health Program Officer
nicollette.weinzeig@unitedwaywinecountry.org
707-528-4485
CA Census Staff Lead: Carlos Beltran

REGION 3

United Way of the Bay Area

Stephanie Kim
Senior Director Census 2020
skim@uwba.org
415-808-4448
CA Census Staff Lead: David Tucker

REGION 4

Faith in Action Network

Pablo Rodriguez
Executive Director, Communities for a New California
pablo@cncedfund.org
916-542-8490
CA Census Staff Lead: Emilio Vaca

REGION 5

Ventura County Community Foundation

Gabino Aguirre
Region 5 Coordinator
drgabino@gmail.com
805-701-3423
CA Census Staff Lead: Emilio Vaca

REGION 6

Sierra Health Foundation Center for Health Project Management

Cindy Quezada
Region 6 Census Outreach
cquezado@sierrahealth.org
916-502-1236
CA Census Staff Lead: Emilio Vaca

REGION 7

The Community Foundation

Deborah Phares
Project Manager, Census 2020
deborah@censusie.org
714-262-4250
CA Census Staff Lead: Quintilia Avila

REGION 8

California Community Foundation

Stephanie Ramirez
Director of Strategic Initiatives
sramirez@calfund.org
213-452-6247
CA Census Staff Lead: Cecil Flournoy

REGION 9

Charitable Ventures of Orange County

Susan Johnson
Project Manager
Susan.johnson@charitableventuresoc.org
714-597-6630 x 123
CA Census Staff Lead: Sara Pol-Lim

REGION 10

United Way of San Diego

Michele Silverthorn
Count Me 2020 Coalition Project Manager
michele.silverthorn@gmail.com
619-549-9838
CA Census Staff Lead: Connie Hernandez

Community Based Organizations

Community-Based Organizations (CBOs) will focus their statewide outreach on demographic groups considered hard-to-count.

AFRICAN-AMERICANS

California Calls

Ama Nyamekye, Project Manager Black Census and Redistricting Hub
ama@goodinfluence.work
718-744-5305
CA Census Staff Lead: David Tucker

ASIAN AMERICAN & PACIFIC ISLANDERS

Asian Americans Advancing Justice

An Le, 2020 Census Statewide Network Manager
ale@advancingjustice-la.org
213-977-7500
CA Census Staff Lead: Sara Pol-Lim

LATINOS

NALEO Educational Fund

Ely Flores, Director of Civic Engagement
eflores@naleo.org
213-747-7606
CA Census Staff Lead: Carlos Beltran

LATINOS

Latino Community Foundation

Christian Arana, Policy Director
carana@latinocf.org
415-236-5145
CA Census Staff Lead: Quintilia Avila

NATIVE AMERICAN AND TRIBAL COMMUNITIES

California Indian Manpower Consortium

Lorenda T. Sanchez, Executive Director
lorendas@cimcinc.com
916-920-0285
CA Census Staff Lead: Kayla Hilario

NATIVE AMERICAN AND TRIBAL COMMUNITIES

California Native Vote Project

Jesse F. Fraire, Statewide Census Coordinator
jfraire@canativevote.org
323-214-9699
CA Census Staff Lead: Kayla Hilario

FARM-WORKERS

Mixteco/Indigena Community Organizing

Arcenio J. Lopez, Executive Director
arcenio.lopez@mixteco.org
805-483-1166
CA Census Staff Lead: Emilio Vaca

FARM-WORKERS

California Rural Legal Assistance, Inc.

Susan Podesta, Director of Grants and Contracts
spodesta@crla.org
530-742-5191 x 319
CA Census Staff Lead: Emilio Vaca

IMMIGRANTS / REFUGEES

Coalition for Humane Immigrant Rights

Esperanza Guevara, Census Campaign Manager
eguevara@chirla.org
213-400-5450
CA Census Staff Lead: Patricia Vazquez-Topete

LGBTQ

Equality California Institute

Jeremy Payne, Program Manager
Jeremy@eqca.org
323-848-9801
CA Census Staff Lead: Mignonne Pollard

LIMITED ENGLISH PROFICIENCY

Coalition for Humane Immigrant Rights

Esperanza Guevara, Census Campaign Manager
eguevara@chirla.org
213-400-5450
CA Census Staff Lead: Patricia Vazquez-Topete

LOW / NO BROADBAND

United Ways of California

Paola Hernandez, Census Program Manager
phernandez@unitedwaysca.org
786-973-2887
CA Census Staff Lead: Quintilia Avila

MIDDLE EAST AND NORTH AFRICAN

Council on American-Islamic Relations – California

Basim Elkarra, Executive Director - Sacramento

Valley/Central CA Area

belkarra@cair.com

916-441-6269

CA Census Staff Lead: Marcy Kaplan

PEOPLE WITH DISABILITIES & SENIORS/OLDER ADULTS

Disability Rights Education & Defense Fund with the California Foundation for Independent Living Centers

Susan Henderson, Executive Director

shenderson@dredf.org

510-644-2555

CA Census Staff Lead: Yumi Sera

Sector-Based Organization

Sector-Based Organizations will focus their statewide outreach on demographic groups considered hard-to-count through their sectoral focus.

SECTOR: HEALTH

California Primary Care Association

Elizabeth Oseguera, Associate Director of Policy
loseguera@cpcpa.org
916-440-8170
CA Census Staff Lead: Marcy Kaplan

SECTOR: LABOR

California Labor Federation

Hector Saldivar, Southern California Field Director
HSaldivar@calaborfed.org
213-276-3376
CA Census Staff Lead: Marcy Kaplan

SECTOR: FAITH-BASED

PICO California

Andrew Lee, Faith Census Hub Manager
Andrew@picocalifornia.org
619-310-7050
CA Census Staff Lead: Marcy Kaplan

SECTOR: BUSINESS/CORPORATE

Council for a Strong America – California

Susan Bonilla, State Director
sbonilla@councilforastrongamerica.org
415-762-8270
CA Census Staff Lead: Marcy Kaplan

EXHIBIT H

(The remainder of this page intentionally left blank)



Status of 2019 Fourth Quarter Deliverables Identified in October 2019 Report Quarterly Progress Report to the Legislature

Deliverable	Anticipated Date	Status/Completed Date
PDI Beta Testing Phase Complete	November 2019	November 2019
Interim SOCS Report published	November 2019	December 2019
Subcontractor information from contracted outreach partners (provided through Implementation Plans)	December 2019	Pending Implementation Plan approvals, estimated January 2020
Native American Statewide Community-Based Organizations contract amendments	December 2019	December 2019
Higher Education Survey Summary of responses	<i>No date specified</i>	January 2020 Progress Report to the Legislature
Augmented Contracted Outreach Partner Allocations	January 2020	January 2020
Higher Education Outreach Strategy outreach strategy summary	January 2020 Progress Report to the Legislature	January 2020 Progress Report to the Legislature
Constitutional Officers Workgroup Information	January 2020 Progress Report to the Legislature	January 2020 Progress Report to the Legislature
Implementation Plan Summary and Analysis	January 2020 Progress Report to the Legislature	Summary in January 2020 Progress Report to the Legislature Analysis timing pending Implementation Plan approvals
Updated allocation plan for 2019-2020 State Budget census funding	January 2020 Progress Report to the Legislature	January 2020 Progress Report to the Legislature
Rapid response and crisis communications plan overview	January 2020 Progress Report to the Legislature	In progress
Final SOCS Report published	March 2020	Spring 2020

EXHIBIT I

(The remainder of this page intentionally left blank)



CA Complete Count – Census 2020 Funding Allocation by Region*

Region 1 – Superior California	
Categories	Amount
ACBO	\$ 1,803,783
Counties	\$ 1,575,525
County Offices of Education	\$ 340,220
2019-2020 Allocation for County/ACBO	\$ 1,419,896
Region 1 Allocation	\$ 5,139,424

Region 2 – North Coast	
Categories	Amount
ACBO	\$ 284,120
Counties	\$ 525,000
County Offices of Education	\$ 125,075
2019-2020 Allocation for County/ACBO	\$ 554,500
Region 2 Allocation	\$ 1,488,695

Region 3 – San Francisco Bay Area	
Categories	Amount
ACBO	\$ 3,084,870
Counties	\$ 3,190,327
County Offices of Education	\$ 569,032
2019-2020 Allocation for County/ACBO	\$ 1,481,464
Region 3 Allocation	\$ 8,325,693

Region 4 – Northern San Joaquin Valley	
Categories	Amount
ACBO	\$ 1,457,271
Counties	\$ 1,215,378
County Offices of Education	\$ 246,181
2019-2020 Allocation for County/ACBO	\$ 776,083
Region 4 Allocation	\$ 3,694,913

Region 5 – Central Coast	
Categories	Amount
ACBO	\$ 1,212,370
Counties	\$ 1,331,655
County Offices of Education	\$ 207,513
2019-2020 Allocation for County/ACBO	\$ 713,702
Region 5 Allocation	\$ 3,465,240

Region 6 – Southern San Joaquin Valley	
Categories	Amount
ACBO	\$ 2,500,110
Counties	\$ 2,669,935
County Offices of Education	\$ 414,717
2019-2020 Allocation for County/ACBO	\$ 1,052,337
Region 6 Allocation	\$ 6,637,099

*Pending final executed contracts. Allocations reflect funding allocated on a regional basis including counties, administrative community-based organizations, and county offices of education. It does not include Tribal Government funding agreements, statewide community-based organizations, sectors, grades K-12 curriculum, higher education, or public relations/media contracts.

**CA Complete Count – Census 2020
Funding Allocation by Region***

Region 7 – Inland Empire	
Categories	Amount
ACBO	\$ 2,588,465
Counties	\$ 2,693,019
County Offices of Education	\$ 559,868
2019-2020 Allocation for County/ACBO	\$ 1,024,135
Region 7 Allocation	\$ 6,865,487

Region 9 – Orange County	
Categories	Amount
ACBO	\$ 1,554,345
Counties	\$ 155,519
County Office of Education	\$ 300,770
2019-2020 Allocation for County/ACBO	\$ 725,082
Region 9 Allocation	\$ 2,735,716

Region 8 – Los Angeles	
Categories	Amount
ACBO	\$ 9,083,265
Counties	\$ 9,393,090
County Office of Education	\$ 2,347,577
2019-2020 Allocation for County/ACBO	\$ 3,756,053
Region 8 Allocation	\$ 24,579,985

Region 10 – San Diego/Imperial	
Categories	Amount
ACBO	\$ 1,793,020
Counties	\$ 1,849,785
County Offices of Education	\$ 378,383
2019-2020 Allocation for County/ACBO	\$ 718,329
Region 10 Allocation	\$ 4,021,188

*Pending final executed contracts. Allocations reflect funding allocated on a regional basis including counties, administrative community-based organizations, and county offices of education. It does not include Tribal Government funding agreements, statewide community-based organizations, sectors, grades K-12 curriculum, higher education, or public relations/media contracts.